



**WE
DIGITIZE
LEAN !**

JUKI

Kanri
Soft 

We make processes visible, measurable and controllable



This is how Kanri Soft works in 4 steps



STEP 1

COLLECTING DATA FROM MULTIPLE SOURCES

We collect process data directly from machines, other systems and operators in one place



STEP 2

PROCESSING

We prepare the data for next steps and calculate KPI's



STEP 3

VISUALISATION

We draw charts with real time data and display processed data

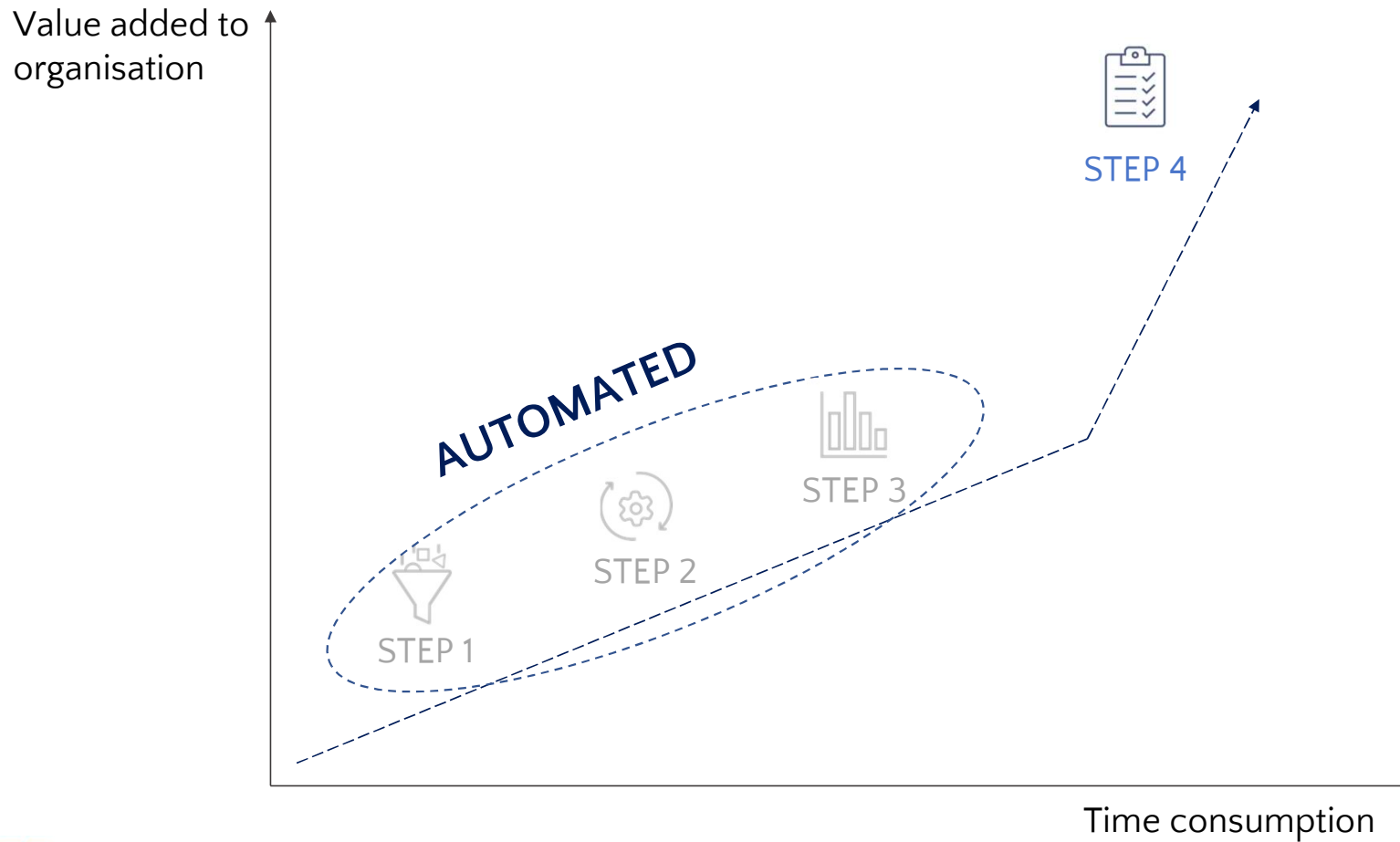


STEP 4

USE IN MANAGEMENT

We enable task management tools to act on real time data

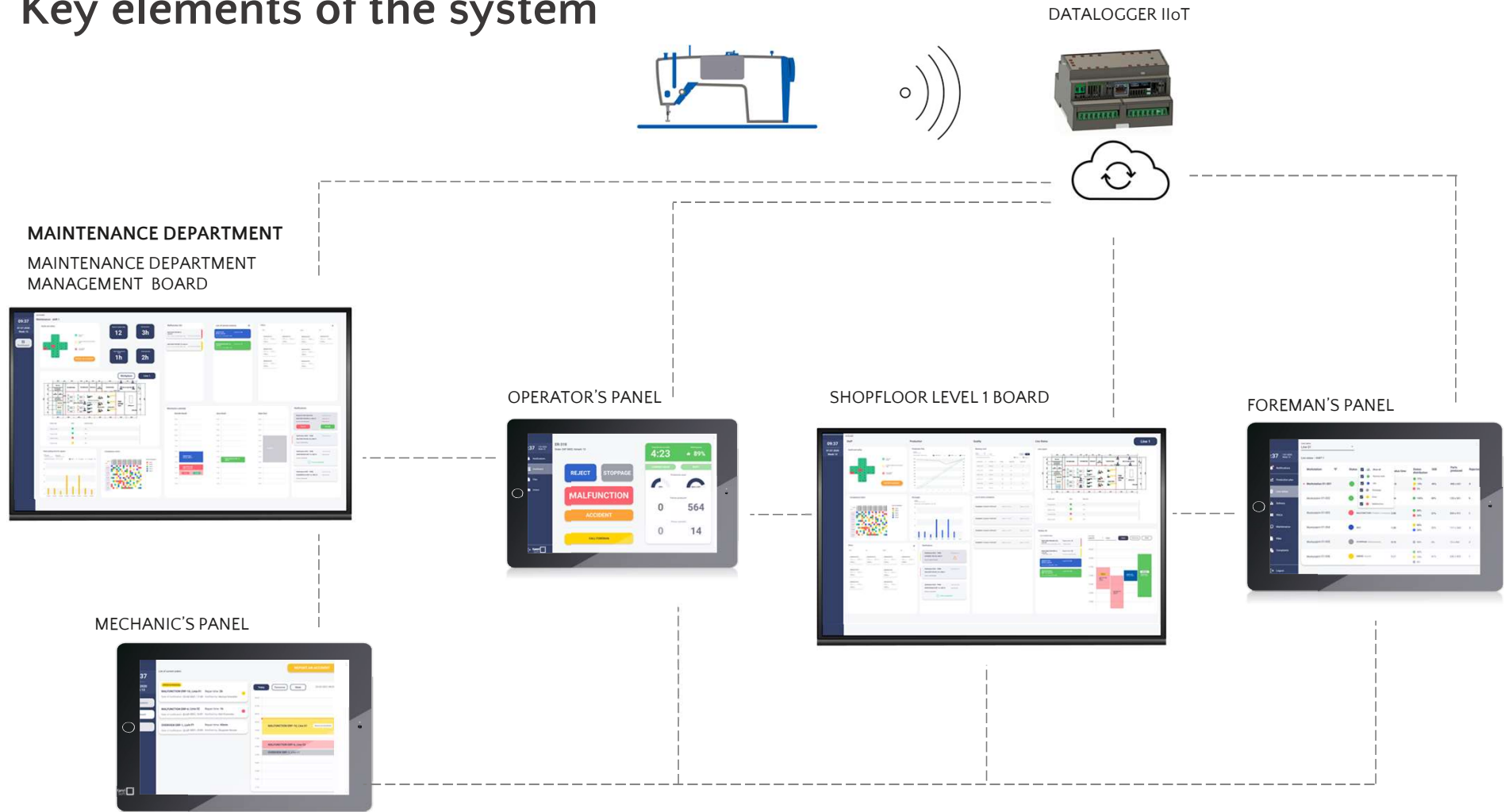
We save time automating Non-Value-Added activities



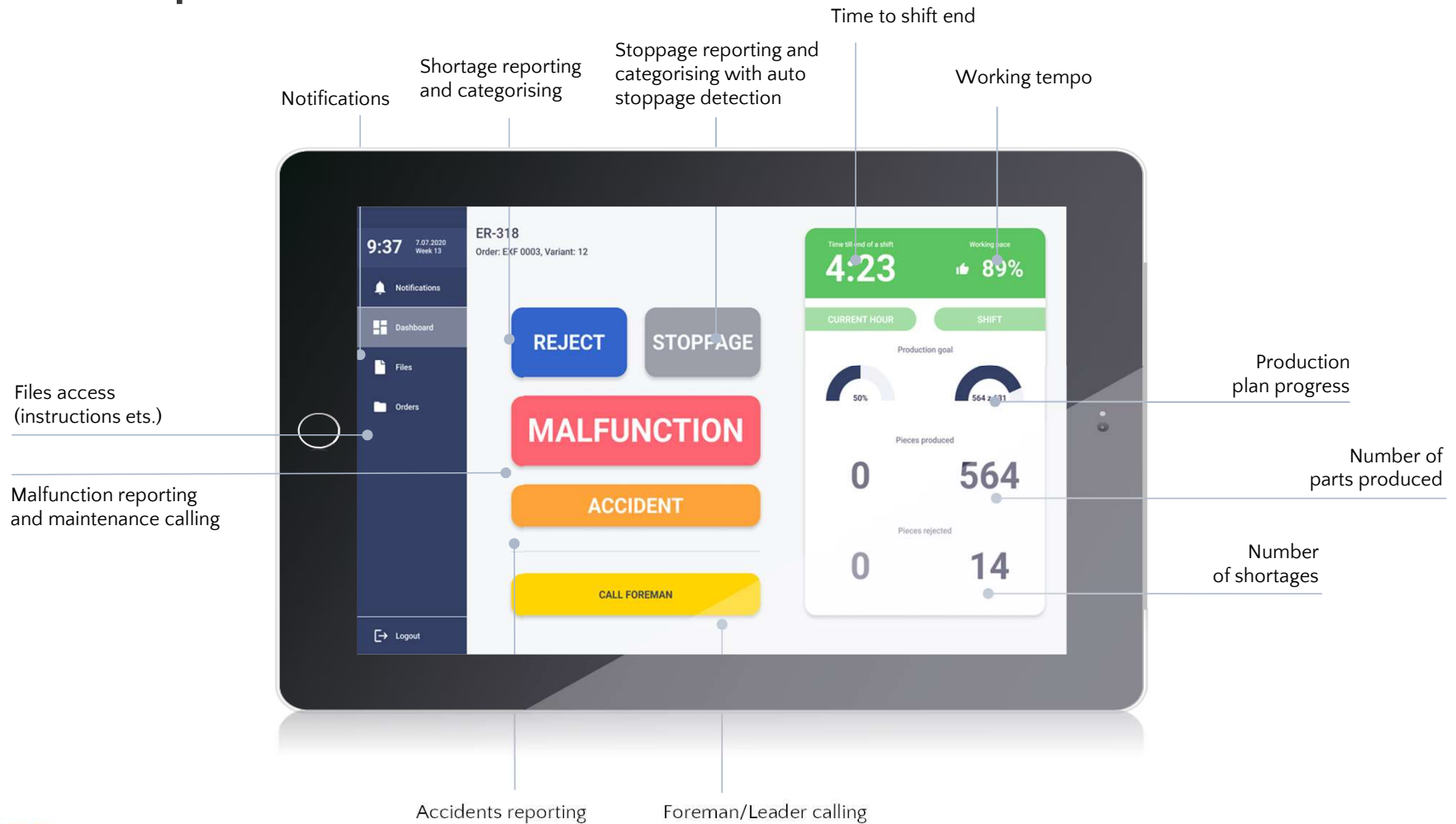


How does it work?

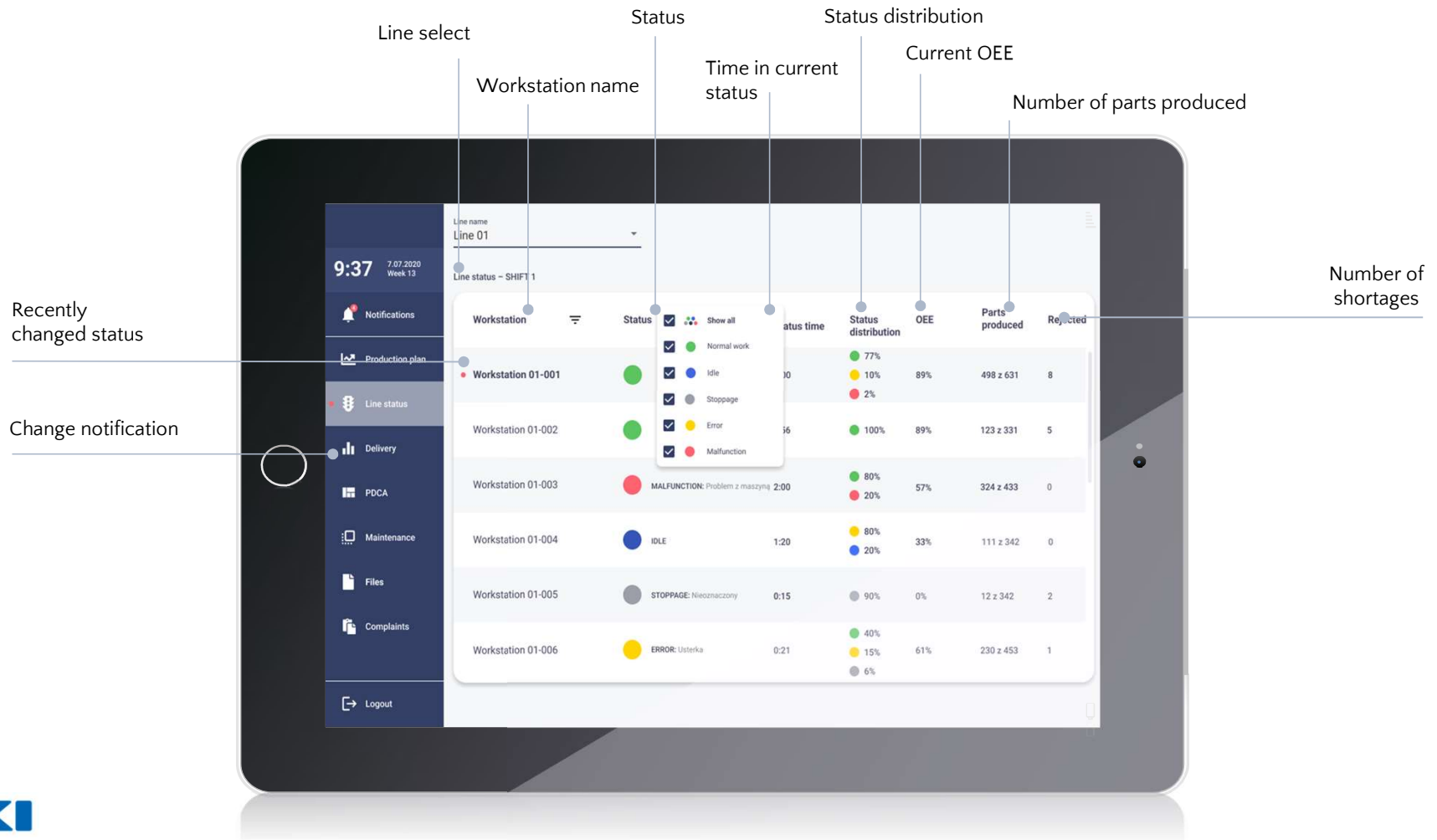
Key elements of the system



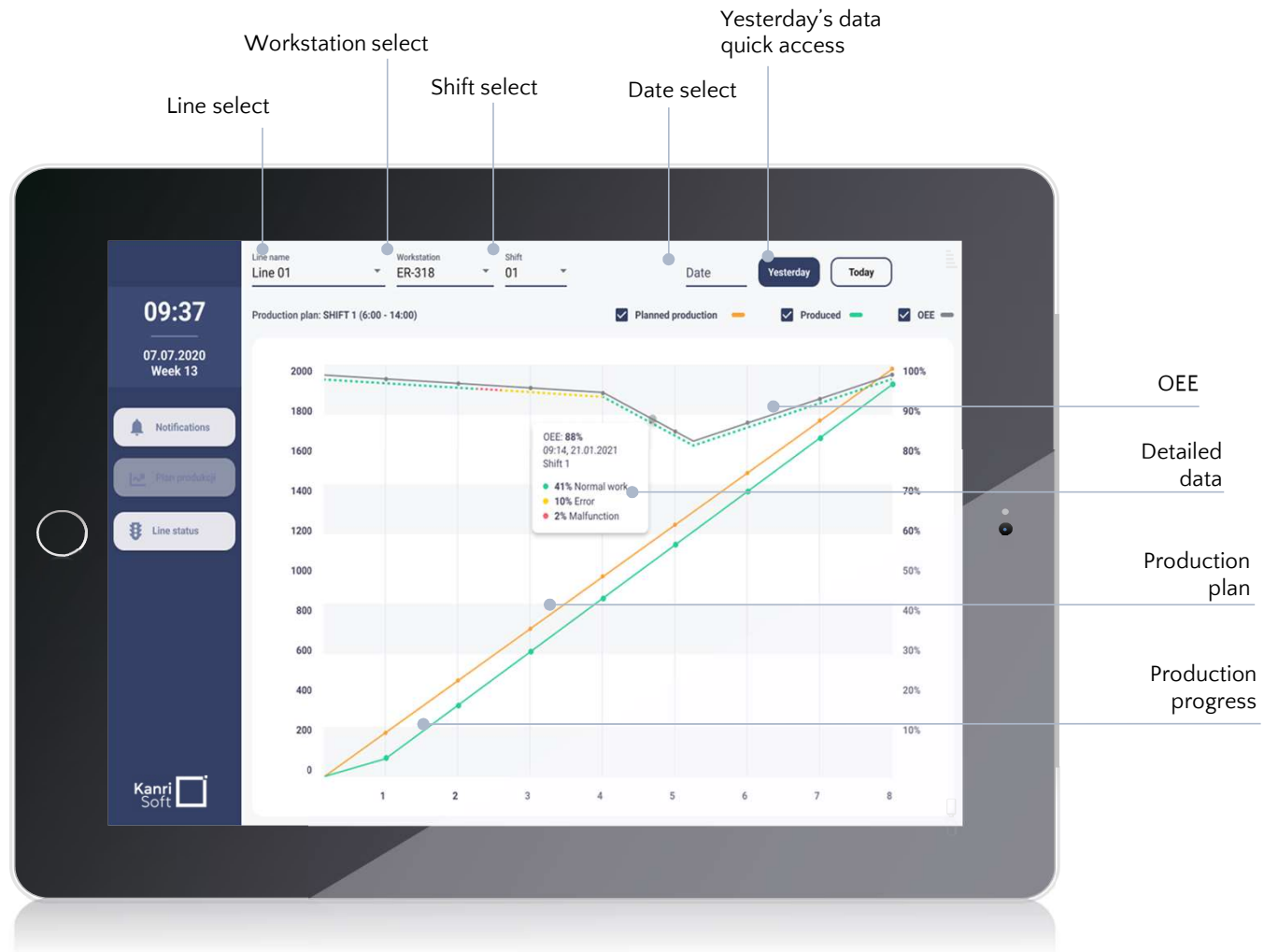
Operator's panel



Foreman's panel: Production line status



Foreman's panel: Production progress



Shopfloor level 1 board

Production progress

Shortage live pareto

Production plan backlog

Safety report

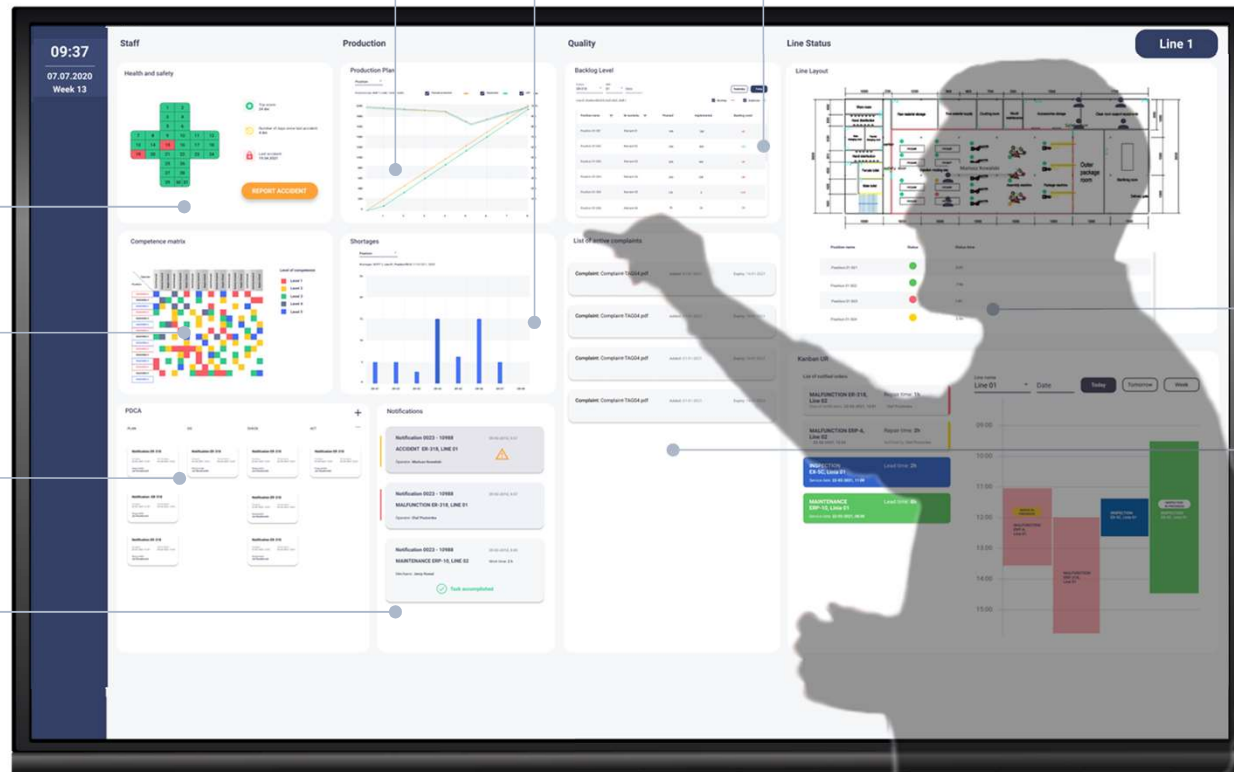
Competence matrix

PDCA projects management

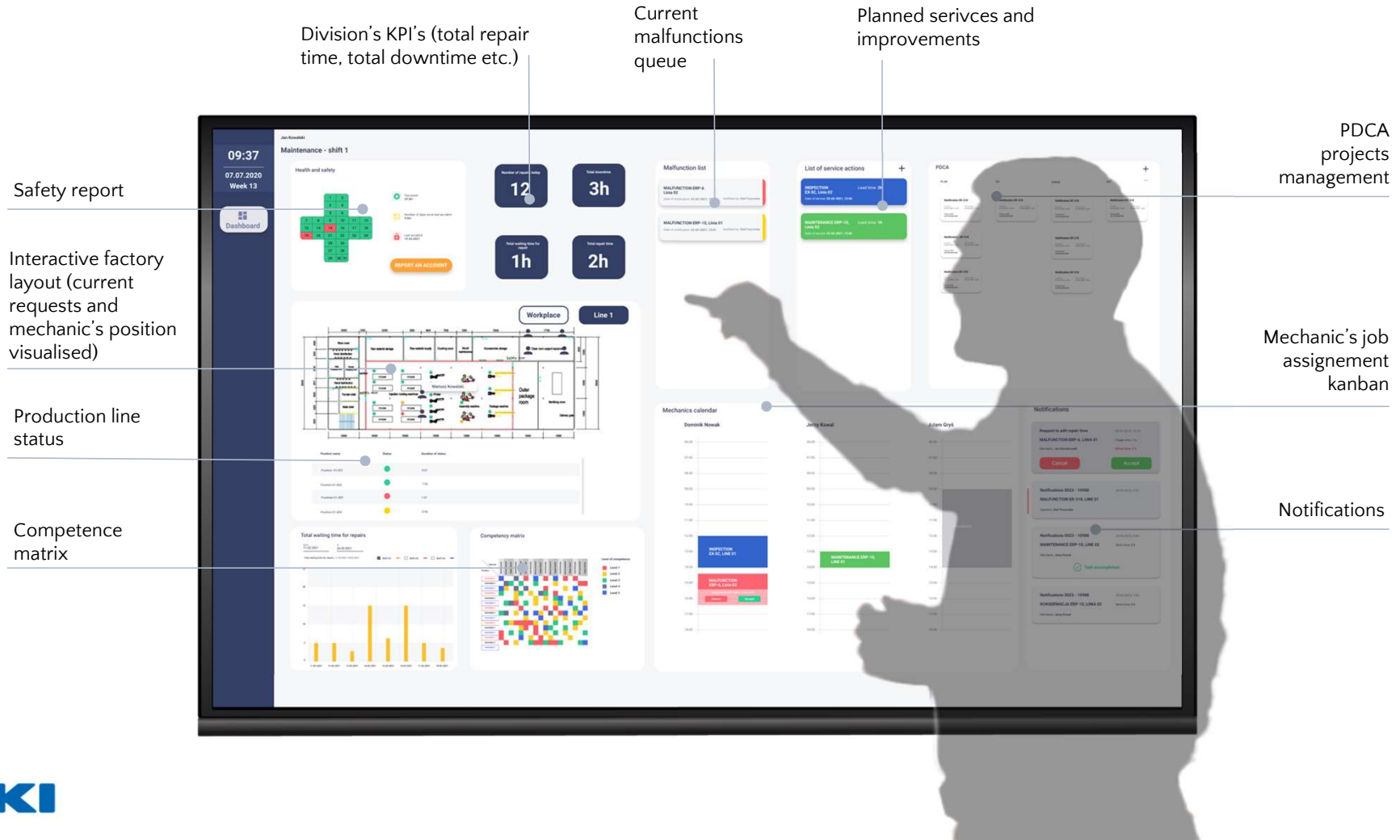
Notifications

Production line status

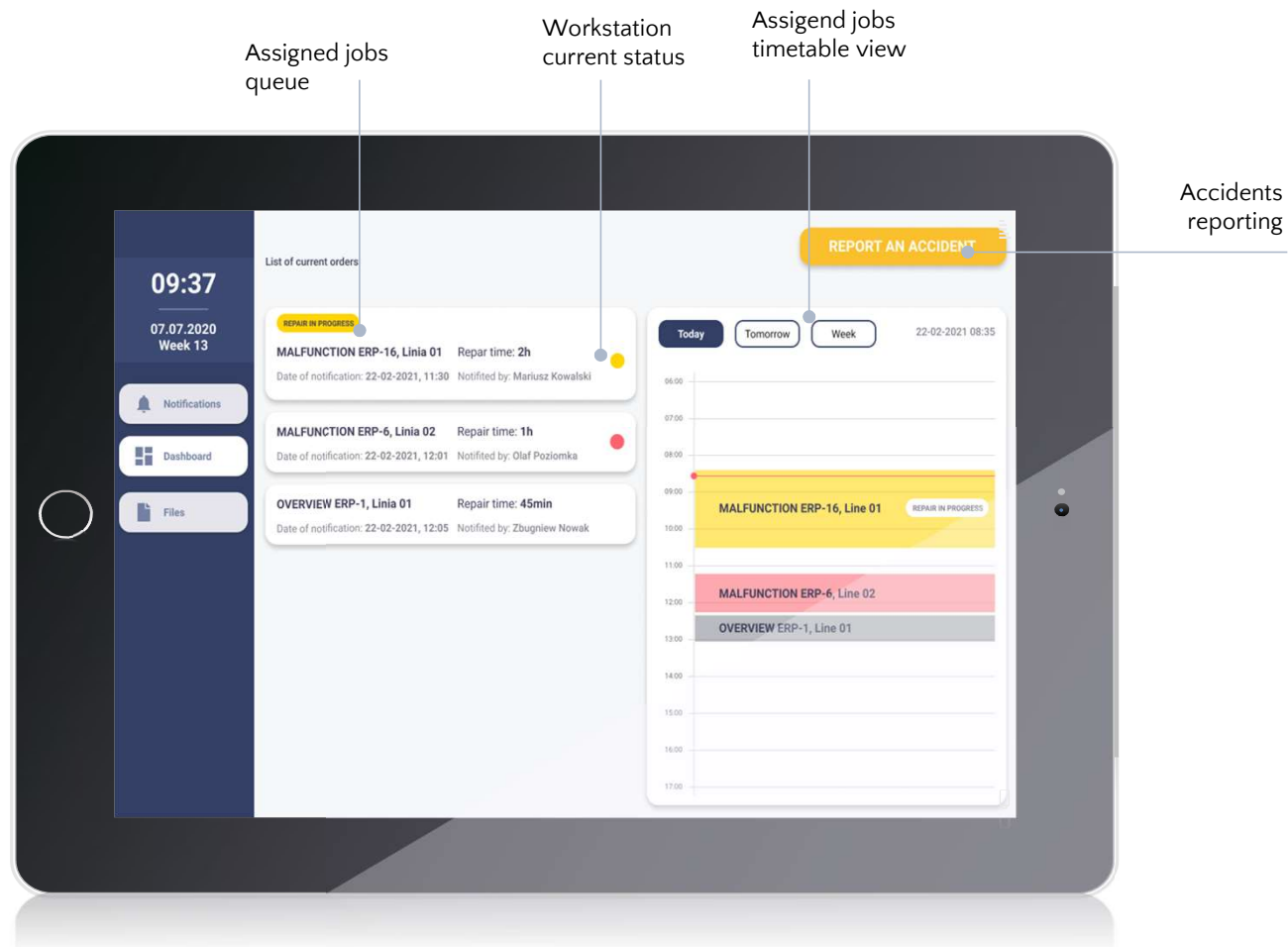
Current customer complaint



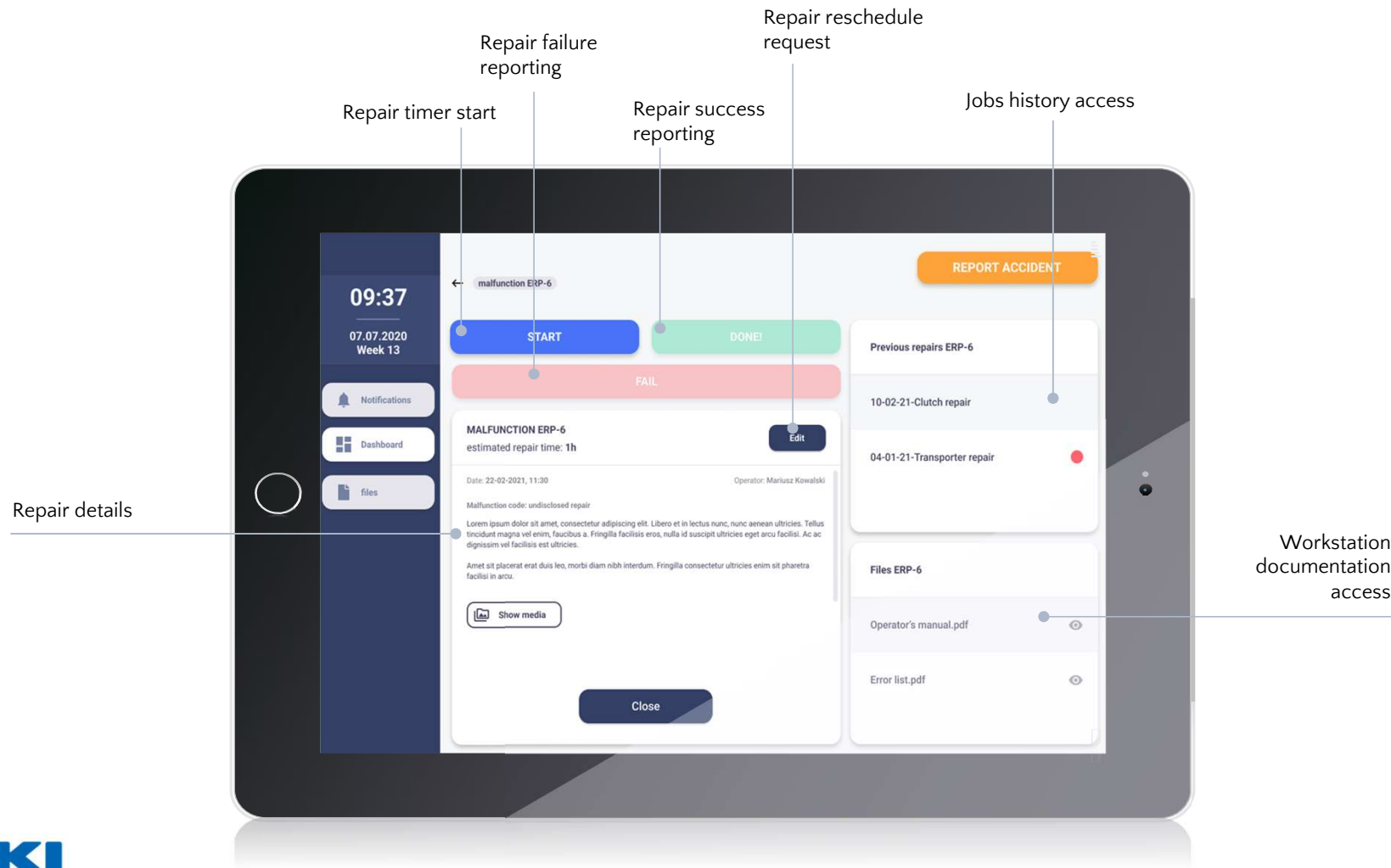
Maintenance board



Mechanic's tablet: jobs dashboard



Mechanic's tablet: job details





Benefits

SAVINGS



- **Eliminated** the need for **manual data collection**
- **Eliminated** the need to **search for a supervisor/mechanic**
- Management **data available in real time**
- **Increased productivity** through better supervision and line balancing
- Recovered employee **time spent on more productive activities**
- **Objectified measurement** of resource utilisation (e.g.: OEE)

QUALITY



- **Information of shortages** available in real time
- **Ability to react instantly** when deviation occurs
- **Quality alerts** Information on client's complaints and important announcements, delivered directly to operator's panels
- **Ability to automatically stop production** in case of detecting an excessive number of shortages
- **Scrap rate reduction** Obniżenie scrap rate (za ROI)

SAFETY

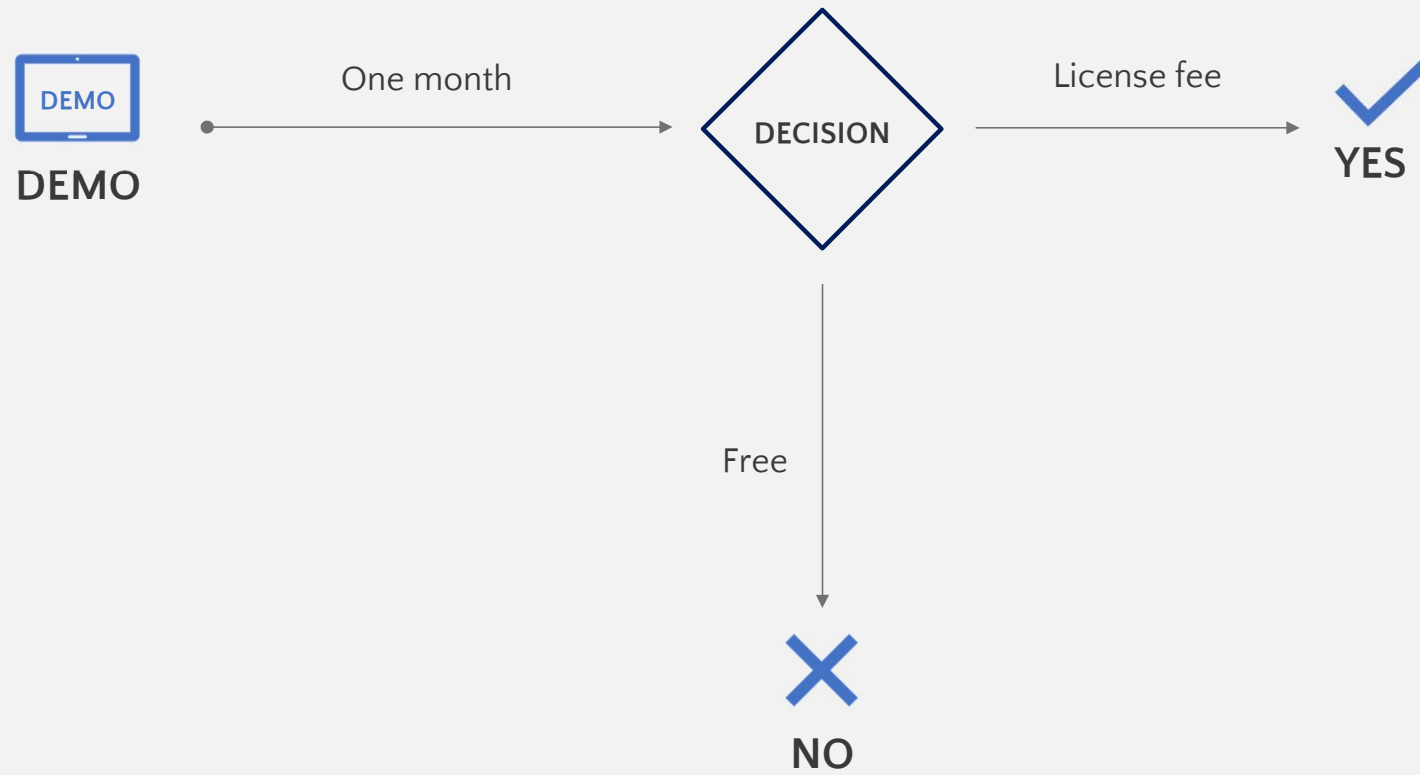


- Accidents may be **reported from any location**
- **Automatic notification** and supervisors calling **in case of an accident**
- **Ability to react faster to notifications** (alerts visible in many places of the system at the same time, SMS alerts, etc.)



How do we start?

Trial version



1 Steps to implement KanriSoft



STEP 1



STEP 2



STEP 3



STEP 4

FEASIBILITY STUDY

Prepare a complete list of workstations that should be covered by KanriSoft including machine models, control box and motors.

PROCESSES DESCRIPTION

Prepare a description (i.e: flow chart, VSM, makigami etc.) of processes you want to measure with KanriSoft

DEMO MEETING

Personal meeting face to face during which live demo of KanriSoft is presented as well as detailed offer

BEGINNING OF TRIAL PERIOD

If all necessary information is collected, precise dates of implementation and trial period can be agreed.

Slide 18

- 1 @daniel.nowak@juki.com @bartek.dubelski@juki.com rzućcie proszę okiem czy ok, jak dla mnie to dość dziwna kolejność, ale oczywiście zostawiam Wam
Grzegorz Golaś, 12/12/2022
- 1 Hej, tak jak patrze wasza stara prezke to tez pod LEAR usunelismy pierwsz 5 slajdow, tutaj one powinny wrocic mysle
Daniel Nowak, 12/12/2022



Thank you for your attention

Daniel NOWAK

Deputy General Manager

Spare Parts Sales

T: +48 22 545 0447

M: +48 883 36 45 40

daniel.nowak@juki.com

www.jukieurope.com