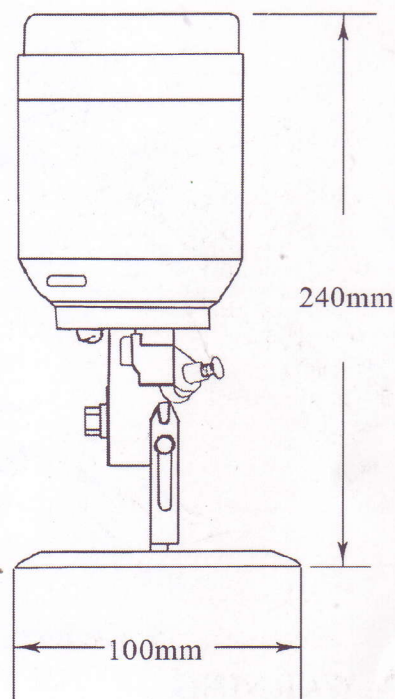
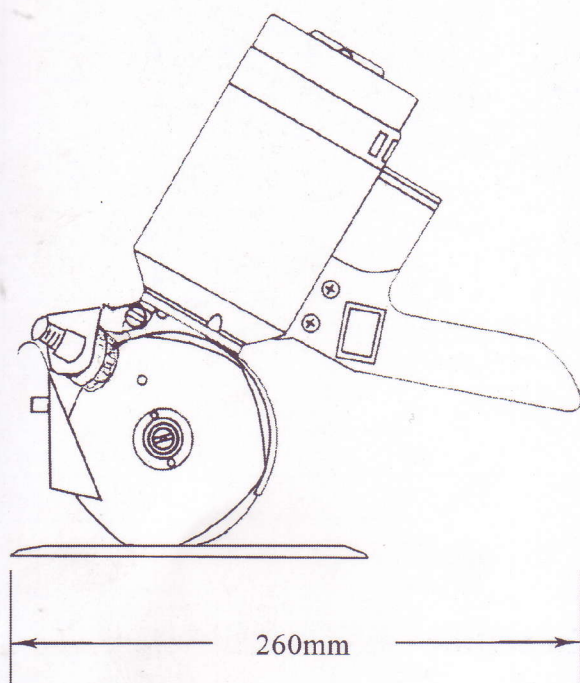


INSTRUCTION MANUAL & PARTS LIST



3½" (90mm) Round Knife Cutter

Cutting Capacity: 24 mm

Blade: Hexagonal Semi Round , Round (Optional)

※Special Attention

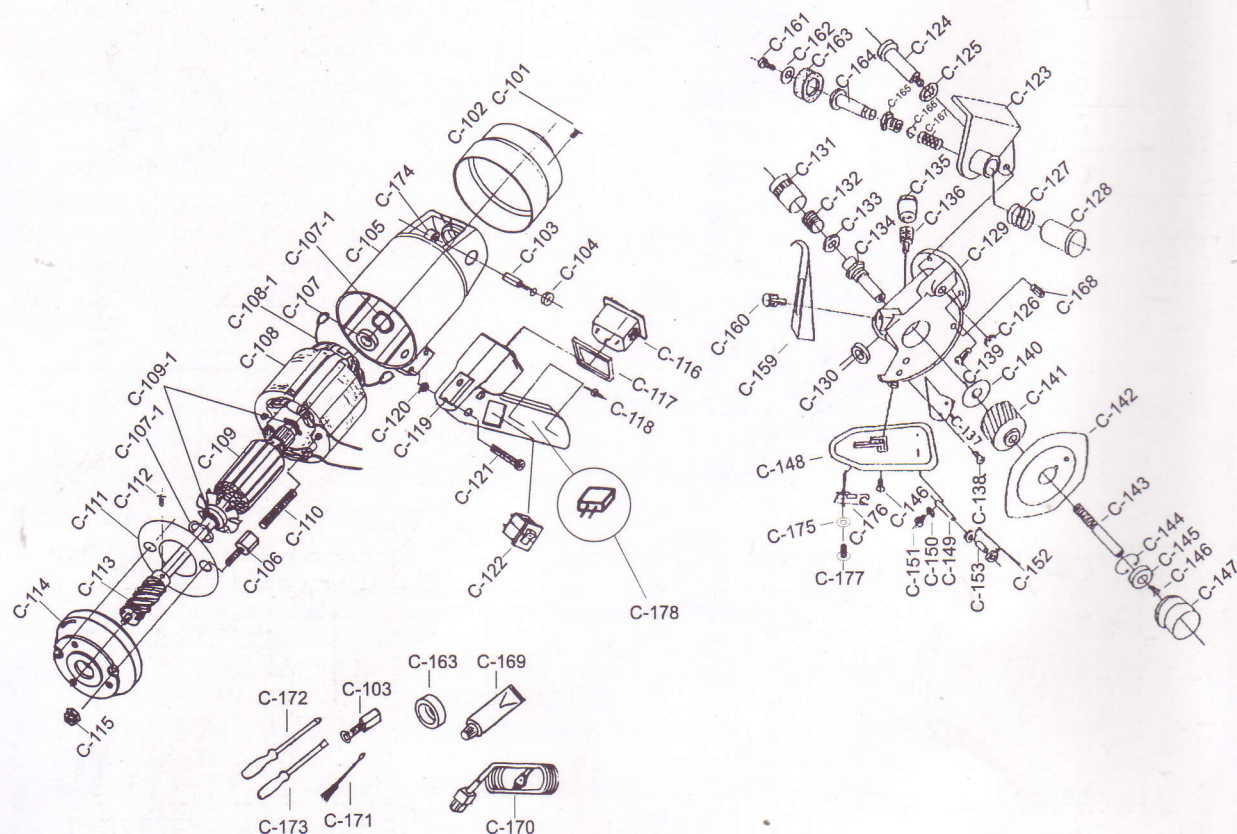
* Read this instruction book before use it.

* Save this instruction book after you read it.

※ *使用前請詳讀本使用說明手冊。

*請妥善保存此使用與零件手冊。

3½ (90MM) WITH COUNTER KNIFE PARTS ASSEMBLY & ACCESSORIES



※General Safety Information ※安全須知

⚠ WARNING

This machine is equipped with a very sharp knife. Keep Hands, Arms, and Hair away from the knife area at all times. Misuse of this machine or failure to follow all safety instructions on this machine & in the instruction manual may result in serious personal injuries.

⚠ 注意 機器裝有銳利刀片，時時刻刻保持 手、手臂、頭髮遠離刀片。
濫用或未遵照本說明書使用將導致個人的傷害。

⚠ **Disconnect** the power supply from the machine when it is not in use
Or during routine maintenance, including lubrication.

⚠ 當機器停止使用時，或平常保養維修及加潤滑油時，須拔掉插頭。

⚠ Attention 使用須知

Before you use & For the First Time: 使用前或第一次使用時

- * The Power supply Voltage must be same as showed on the nameplate.
If incorrect electrical supply may damage it & caused dangerous.
檢查使用電壓與名牌標示是否一致、電源不符會損害機器及其他危險。
- * Before plug in the Electricity to the machines to be sure the Motor Switch is in the "OFF" position.
機器通電前必須確認馬達開關在OFF位置。
- * Read the operation procedure if you do not understand Please contact your supervisor or call your supplier.
詳讀操作說明如仍不清楚請與供應商聯絡。

PARTS LIST

| NO. | PARTS NAME | 零件名稱 |
|---------|---------------------------------|--------|
| C-101 | Screw For Cover | 後蓋螺絲 |
| C-102 | Cover | 後蓋 |
| C-103 | Carbon Brush With Spring | 帶彈簧碳刷 |
| C-104 | Cap For Carbon Brush | 碳刷蓋 |
| C-105 | Motor Cover | 馬達外殼 |
| C-106 | Socket Screw | 套筒螺絲 |
| C-107 | Ball Bearing | 培林 |
| C-107-1 | Wave Washer | 波形墊片 |
| C-108 | Stator | 定子線圈 |
| C-108-1 | Spring Staple | 彈簧圈 |
| C-109 | Rotor | 轉子線圈 |
| C-109-1 | Snap Ring | 扣環 |
| C-110 | Stud Bolt | 定子固定螺絲 |
| C-111 | Air Guide | 空氣導流板 |
| C-112 | Screw For Worm Gear | 蝸桿固定螺絲 |
| C-113 | Shaft Gear | 蝸桿 |
| C-114 | Front Cover | 馬達前蓋 |
| C-115 | Nut | 螺帽 |
| C-116 | Receptacle | 插座 |
| C-117 | Receptacle Fixed Base | 插座固定座 |
| C-118 | Screw | 螺絲 |
| C-119 | Operating Handle | 手把 |
| C-120 | Nut for Handle | 螺帽 |
| C-121 | Screw for Handle | 螺絲 |
| C-122 | Switch | 開關 |
| C-123 | Sharpening Stone Bracket | 砂輪固定架 |
| C-124 | Grinder Shaft | 固定軸心 |
| C-125 | Washer | 華司 |
| C-126 | Lock Nut For Stone | 砂輪固定螺帽 |
| C-127 | Spring | 彈簧 |
| C-128 | Push Knob For Stone | 砂輪按鈕 |
| C-129 | Gear Box Fixed Base | 齒輪箱 |
| C-130 | Bushing | 含油軸承 |
| C-131 | Adjusting Nut | 壓力螺帽 |
| C-132 | Spring | 彈簧 |
| C-133 | Nut | 螺帽 |
| C-134 | Fixed Shaft For Worm Gear | 蝸輪固定軸心 |
| C-135 | Cap For Grease Cup | 油杯蓋 |
| C-136 | Grease Cup | 黃油杯 |

| NO. | PARTS NAME | 零件名稱 |
|-------|-----------------------------|-----------|
| C-137 | Guide Plate | 導引片 |
| C-138 | Screw For Guide Plate | 導引片固定螺絲 |
| C-139 | Screw | 螺絲 |
| C-140 | Worm Gear Washer | 蝸輪墊片 |
| C-141 | Worm Gear | 蝸輪 |
| C-142 | Blade | 刀片 |
| C-143 | Screw For Blade | 刀片固定螺絲 |
| C-144 | Snap Ring | 扣環 |
| C-145 | Ball Bearing | 培林 |
| C-146 | Screw | 螺絲 |
| C-147 | Lock Cover For Blade | 刀片固定蓋 |
| C-148 | Base Plate | 底座 |
| C-149 | Roller Shaft | 輪軸 |
| C-150 | Washer | 華司 |
| C-151 | Screw | 螺絲 |
| C-152 | Rollers | 輪子 |
| C-153 | Pipe | 套管 |
| C-159 | Finger Guard | 護片 |
| C-160 | Screw For Finger Guard | 護片螺絲 |
| C-161 | Screw For Stone | 砂輪固定螺絲 |
| C-162 | Washer For Stone | 砂輪固定螺絲用華司 |
| C-163 | Sharpening Stone | 砂輪 |
| C-164 | Sharpening Stone Fixed Base | 砂輪固定座 |
| C-165 | Pipe Screw | 砂輪座套圈 |
| C-166 | Snap Ring | 扣環 |
| C-167 | Spring | 彈簧 |
| C-168 | Oil Felt | 油棉 |
| C-169 | Grease | 黃油 |
| C-170 | Code Complete With Earth | 電源線 |
| C-171 | Cleaning Brush | 清潔刷 |
| C-172 | Screwdriver (+) | 十字起子 |
| C-173 | Screwdriver (-) | 一字起子 |
| C-174 | Carbon Brush Fixed Base | 碳刷座 |
| C-175 | Washer For Counter Blade | 下刀固定螺絲用華司 |
| C-176 | Counter Blade | 下刀 |
| C-177 | SCREW For Counter Knife | 下刀固定螺絲 |
| C-178 | Capasitor | 電容 |

※ OPERATING & MAINTENANCE;

1. In General 通論

Handle cutter with great care Do not drop it or handle it roughly as this will change its Adjustments and may cause serious damage to the mechanism.

小心操作、不可掉落，粗糙運作會致使機械另件損壞。

2. Prior to Starting the Cutting Operation remove any obstacles from the path of the base plate.

操作前先移除底座前任何障礙物。

3. Cutting Operation 裁剪運作

Do not force cutter through material by nature of their texture and because of the property of their fibers, not all materials can be cut with the same speed or ease. Trial cutting will readily let you find the best speed at which the machine is to be advanced through the material.

因織品的特性不要依其紋路裁剪，不是任何材質都可依同一速度裁剪，試裁將使取得機器與材料間的最佳匹配。

4. Sharpening the Blade 如何磨刀

When the machine in operating push the **Push Knob #C128** down for a few seconds so that the sharpening stone lighting touches and grinds the blade for several times.

當機器運轉時輕按下#C128砂輪按鈕、使砂輪輕觸刀片數次即完成。

5. How to Replace Blade 如何換刀片

5-1 Make sure the electric cord is unplug & disconnected from the power source.

先確認電源線已斷電、插頭扒除。

5-2 Turn the screw of finger guard (#C160) and remove the finger guard(#C159)

鬆開#C160護片螺絲、並移開護片。

5-3 Remove the blade lock cover(#C147) by turning it left, Take off snap ring (#C144) Screw(#C143,,)

移開刀片固定蓋(#C147)左旋，移開#C144扣環？

5-4 Remove the blade (#C142) and clean any dust or dirt from the machine & Replace the blade & Assembly it back.

取出刀片並清潔所有雜務及灰塵、更換刀片並按反向裝回。

6. How to replace carbon brush 如何更換碳刷

6-1 Make sure the machine is unplugged, remove the two screw(#C101)and pull the Cover(#C102) upward.

先拔下電源插頭，鬆開(#C101)螺絲及(#102)蓋片

6-2 Remove the cap Screw(#C104) and replace the Carbon Brush(#C103).

移除(#104)及更換(#103)碳刷

6-3 Put the cover back into original position and tightens the Screw.

依6-1，6-2把拆下之螺絲及零件裝回

6-4 Check right and left carbon brushes from time to time and always replace both right & left carbons together when change it.

經常檢查碳刷，且更換時須一起更換

7. Lubrication and Maintenance 上油與保養

7-1 Turn the Grease Cap(#C135) Clockwise a little bit to inject the grease into the gear box.

順時針轉油壺蓋片入少許牛油

7-2 Make sure to and the grease supplied with the machine to the grease cup(#C136) when the grease cap is screwed down to the bottom.

確認牛油在(#136)之量及充份加入機器中

7-3 Always keep the machine clean and free from remnants.

確保機器清潔及避免雜物

8. Maintenance & Inspection 保養與檢查

8-1 Keep machine clean by removing all accumulations of lint, thread and cutting from around the knife itself to clean away from behind it any accumulated foreign matter.

先清除刀片四週棉絮及雜物

8-2 In addition, add grease to the grease cup Monthly using special grease that is supplied with the machine.

添加入適量的牛油於油杯內

8-3 From time to time, Check the right & left carbon brushes and replace when necessary.

每次保養時檢查碳刷必要時更換之

8-4 It is recommended that the machine to be turned off when not in use.

建議機械不使用時請勿插電

8-5 Never put your hands in front of the blade while operating.

運轉時不時將手放入前端

8-6 Before doing any work on the machine is sure to disconnect the machine from the electrical outlet.

保養或在機械上有任何動作時，必須先將插頭拔除電源