

*Revolutionize Production through  
worker creativity by pegasus!*

# EX SERIES

**EX3200N Series** パッカリング防止機能付き安全縫いマシン  
Safety stitch machines with  
puckering preventive capability

**EX5200N Series** パッカリング防止機能付きオーバーロックマシン  
Overedgers with puckering preventive capability

## Specific Parts Catalog

June, 1994  
Cat.No.9669



**PEGASUS®**

# パーツカタログの見方

■このパーツカタログは、1994年6月製造中のEX3200N・EX5200Nシリーズミシンの専用部品のみを次の要領で編集しています。

※専用部品以外の部品は、EX3200・EX5200シリーズの特定のサブクラスと同じ部品を使用しています。

下記のサブクラス対照表を参照して、EXシリーズパーツブックも合わせてご覧ください。(Cat. No. 9605 △)

■2~7頁には部品を機構別に収録し、左頁が部品の分解図、右頁がパーツリストになっています。

また、部品分解図に付されている番号は、パーツリストのREF. NO.(参照番号)を示しています。

■ゲージパーツ表

これらの部品は、特定の形式にのみ使用されている部品です。8~9頁に一括して記載しています。

■10頁以降には部品番号インデックスを記載し、部品番号だけで、その図解、名称などが容易に引き出せます。

■部品の御注文いただくときは、必ず部品番号だけを明示して下さい。

なお、このパーツカタログの記載事項は改良により、予告なく変更されることがありますので、あらかじめご了承ください。

# INTRODUCTION

■ This parts book contains only specific parts for the EX3200N・EX5200N Series that were manufactured in June, 1994.

※ Other parts are common in the subclasses between EX3200・EX5200 and EX3200N・EX5200N Series except the above-mentioned specific parts. Therefore refer to the comparison table below and then the EX Series parts book (Cat.No.9605 △) for other parts.

■ The parts classified by each mechanism are shown on pages 2 ~ 7. A page on left shows the breakdown of the parts comprising the mechanism and a page on right the parts list. The numbers given to each illustration are the REF.NOs. on the parts list.

■ Gauge parts list

Gauge parts shown on pages 8~9 are used only for the specific type of machine.

■ A numeric index of the parts is attached to page 10 on and after. The illustration and/or description of the required part can be easily referred to by the part number.

■ Always give the part numbers when ordering parts.

The contents of this parts book are subject to change to without notice.

## サブクラス対照表 (Subclass comparison table)

| EX3200N Series            | EX3200 Series          | EX5200N Series   | EX5200 Series |
|---------------------------|------------------------|------------------|---------------|
| (15N)<br>EX3216N-01/222 → | (15)<br>EX3216-01A/222 | EX5204N-01/232 → | EX5204-01/223 |
| (15N)<br>EX3216N-01/232 → | (15)<br>EX3216-01A/222 | EX5214N-01/282 → | EX5214-01/233 |
|                           |                        |                  |               |
|                           |                        |                  |               |

# 目 次

頁

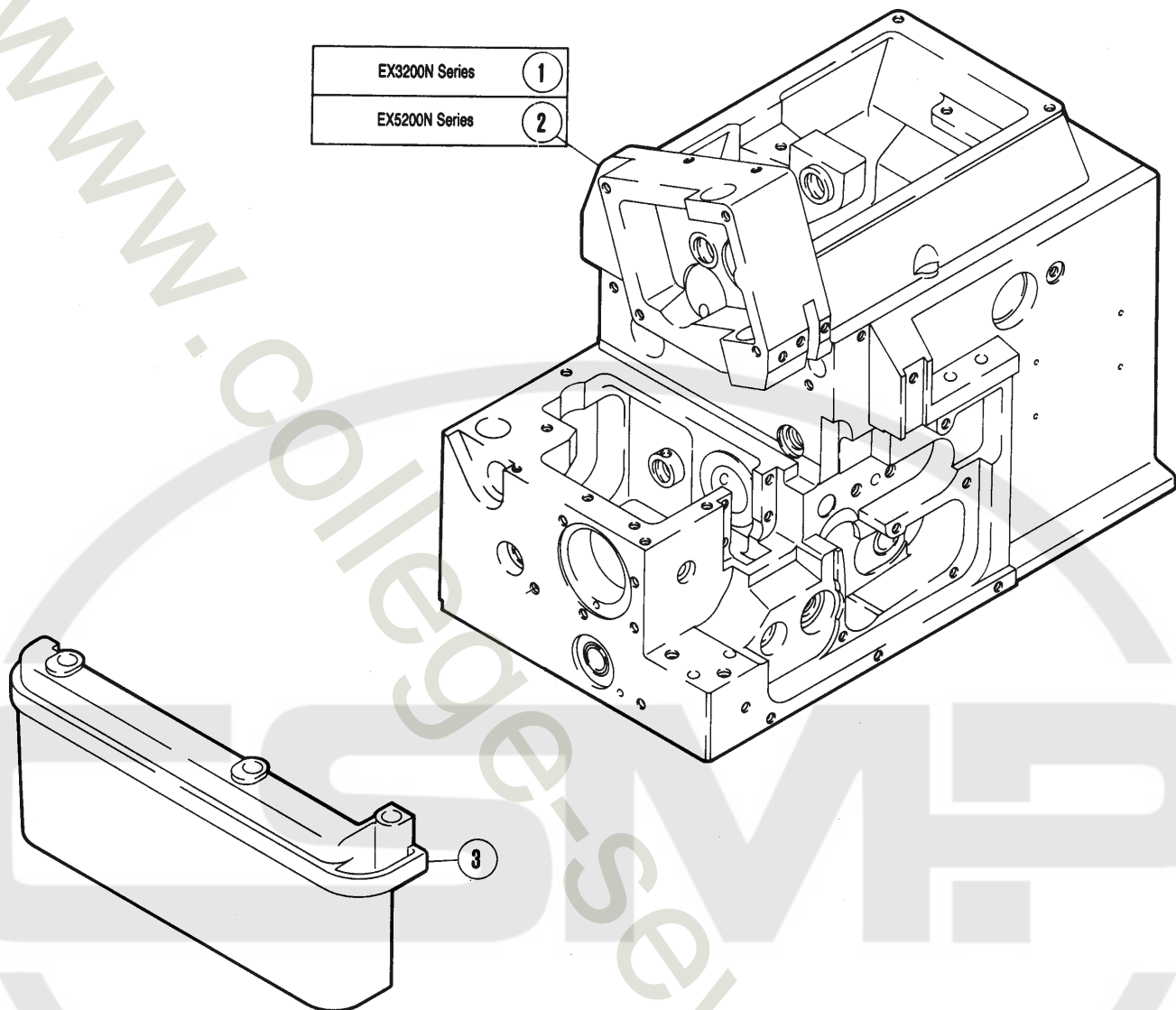
|                         |      |
|-------------------------|------|
| ベッド、カバー、クランクシャフト機構..... | 2~ 3 |
| 送り機構 .....              | 4~ 5 |
| 押エ機構 .....              | 6~ 7 |
| ゲージパーツ表 .....           | 8~ 9 |
| 部品番号インデックス .....        | 10   |

# TABLE OF CONTENTS

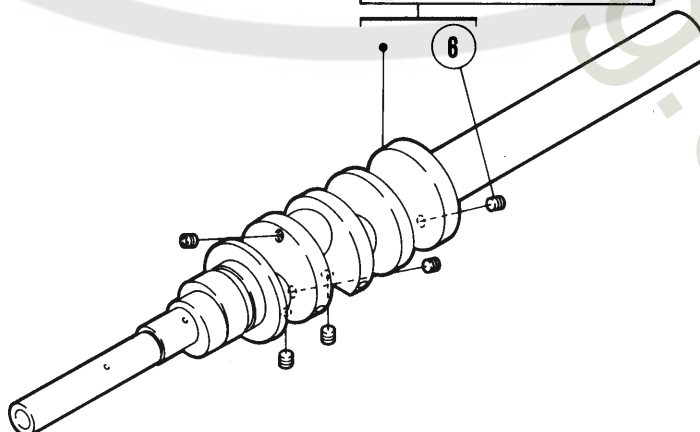
Page

|  |      |
|--|------|
| MACHINE BED FRAME,COVER,CRANKSHAFT DRIVE MECHANISM | 2~ 3 |
| FEED MECHANISM.....                                | 4~ 5 |
| PRESSER FOOT MECHANISM .....                       | 6~ 7 |
| GAUGE PARTS LIST.....                              | 8~ 9 |
| PART NUMBER INDEX.....                             | 10   |

|                |   |
|----------------|---|
| EX3200N Series | 1 |
| EX5200N Series | 2 |



|   |                |
|---|----------------|
| 4 | EX3200N Series |
| 5 | EX5200N Series |



ベッド,カバー  
クランクシャフト機構

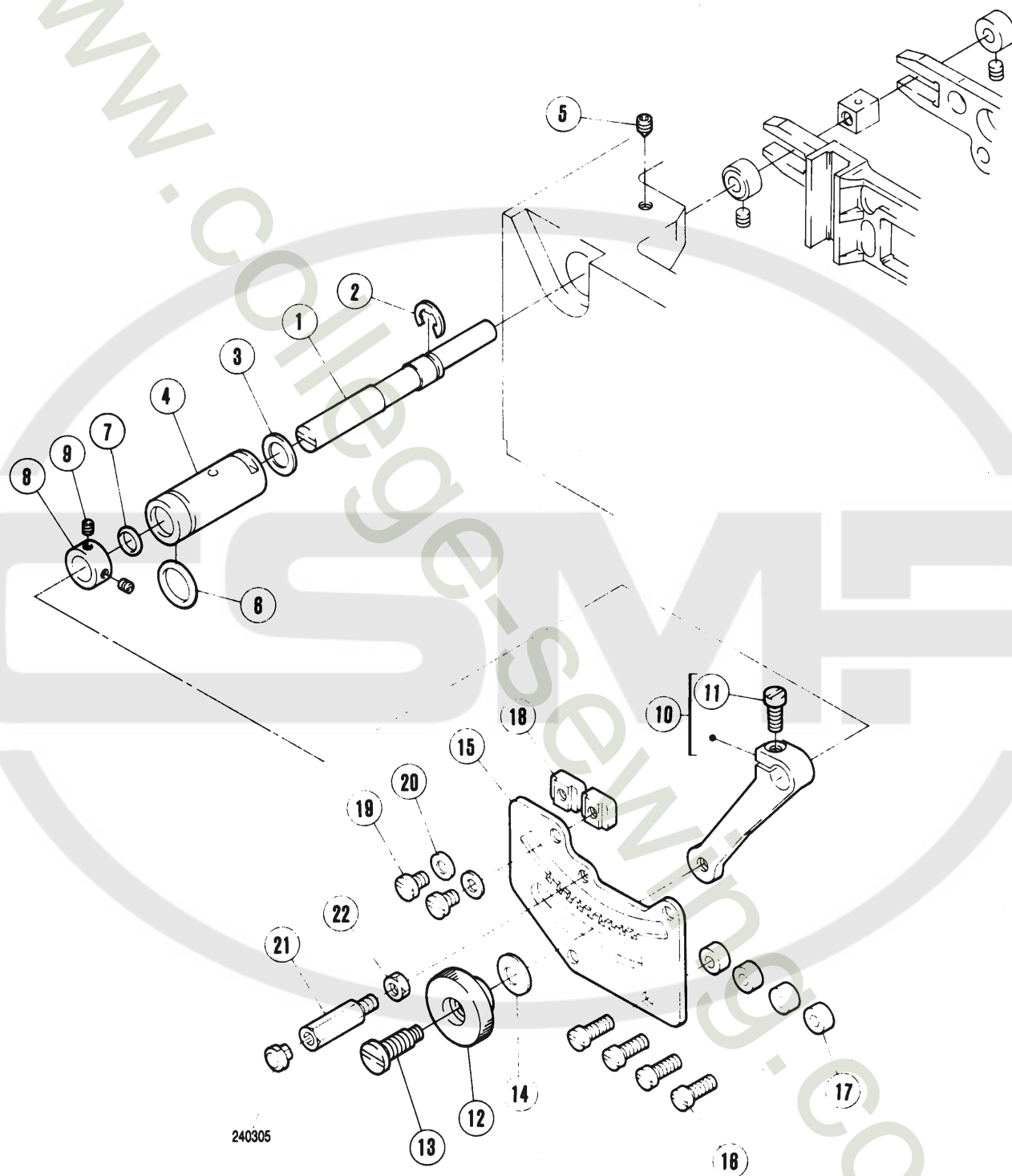
MACHINE BED FRAME ,COVER  
CRANKSHAFT DRIVE MECHANISM

| REF.<br>NO. | PART NO.<br>部 品 番 号 | 名 称       | NAME                 | QT. |
|-------------|---------------------|-----------|----------------------|-----|
| *1          | 270001D9S           | ベ ッ ド (組) | MACHINE BED COMPLETE | 01  |
| *2          | 270001C9S           | ベ ッ ド (組) | MACHINE BED COMPLETE | 01  |
| 3           | 270030DUB           | 横 カ バ ー   | SIDE COVER           | 01  |
| 4           | 270500F             | ク ラ ン ク 軸 | CRANKSHAFT           | 01  |
| 5           | 270500E             | ク ラ ン ク 軸 | CRANKSHAFT           | 01  |
| 6           | 007151              | 止 ネ ジ     | SCREW                | 05  |

●\*=販売不可  
●XXXXXXはゲージパーツです。  
8-9頁のゲージパーツ表で確認してください。

●\*= Not for sale basically  
●XXXXXX is one of the gauge parts.  
Please confirm the correct part by the gauge parts lists on pages 8-9.

WWW.COM-UK



# 送り機構

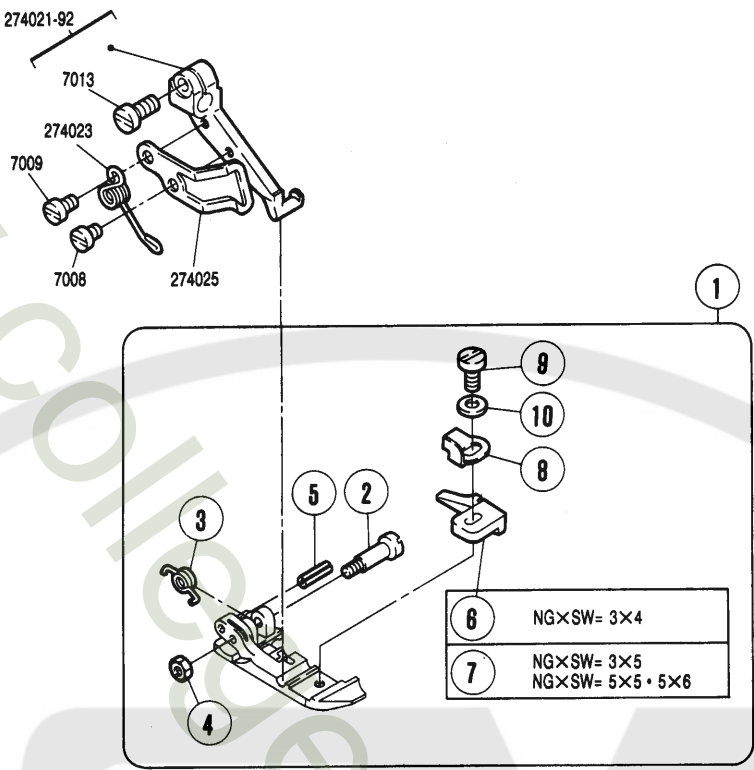
# FEED MECHANISM

| REF.<br>NO. | PART NO.<br>部品番号 | 名 称         | NAME             | QT. |
|-------------|------------------|-------------|------------------|-----|
| 1           | 272554           | 段付ピン        | PIN              | 01  |
| 2           | 202522           | 止メ輪         | RING             | 01  |
| 3           | 240434           | 座金          | WASHER           | 01  |
| 4           | 272553           | ブッシュ        | BUSHING          | 01  |
| 5           | 004546           | 止ネジ/M4×5    | SCREW            | 01  |
| 6           | 201022           | Oリング        | O RING           | 01  |
| 7           | 240017           | Oリング        | O RING           | 01  |
| 8           | 232508           | カラー         | COLLAR           | 01  |
| 9           | 001459           | 止ネジ/C4×3    | SCREW            | 02  |
| 10          | 272555-92        | レバー         | LEVER            | 01  |
| 11          | 007014           | 平ネジ/M3.5×10 | SCREW            | 01  |
| 12          | 252069           | ナット         | NUT              | 01  |
| 13          | 007059           | 段付ネジ/4.5    | SCREW            | 01  |
| 14          | 211301           | 皿バネ         | SPRING           | 01  |
| 15          | 272556           | 調節板         | REGULATING PLATE | 01  |
| 16          | 007021           | 平小ネジ/M4×12  | SCREW            | 04  |
| 17          | 240321           | スペーサー       | SPACER           | 04  |
| 18          | 252658           | ストッパー       | STOPPER          | 02  |
| 19          | 007018           | 平ネジ/M4×6    | SCREW            | 02  |
| 20          | 303448           | 座金          | WASHER           | 02  |
| 21          | 270076B          | ホルダー        | HOLDER           | 01  |
| 22          | 004821           | 六角ナット/M4    | NUT              | 01  |

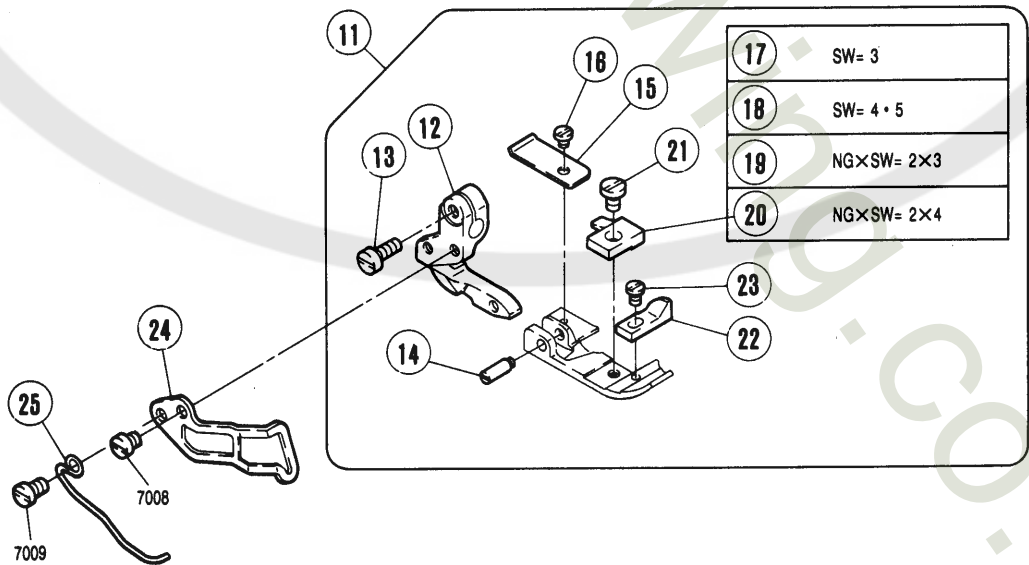
●\*ニ販売不可  
●XXXXXXはゲージパーツです。  
8-9頁のゲージパーツ表で確認してください。

●\*ニ Not for sale basically  
●XXXXXX is one of the gauge parts.  
Please confirm the correct part by the gauge parts lists on pages 8~9.

EX3215N•EX3216N-01



EX5204N•EX5214N-01





| REF.<br>NO. | PART NO.<br>部品番号 | 名称              | NAME                | QT. |
|-------------|------------------|-----------------|---------------------|-----|
| 1           | XXXXXX           | 押エ              | PRESSER FOOT        | 01  |
| 2           | 211919           | 段付ピン            | PIN                 | 01  |
| 3           | 211918           | ネジリバネ           | SPRING              | 01  |
| 4           | 003150           | 六角ナット / C1      | NUT                 | 01  |
| 5           | 211920           | スプリングピン         | PIN                 | 01  |
| 6           | 211915A          | 押エ爪             | PRESSER FOOT FINGER | 01  |
| 7           | 211916A          | 押エ爪             | PRESSER FOOT FINGER | 01  |
| 8           | 211917           | 取付板             | BRACKET             | 01  |
| 9           | 005089           | 平ネジ             | SCREW               | 01  |
| 10          | 300248           | 座金              | WASHER              | 01  |
| 11          | XXXXXX           | 押エ              | PRESSER FOOT        | 01  |
| *12         | 277136           | ホルダー            | HOLDER              | 01  |
| 13          | 007013           | 平小ネジ / M3.5 × 8 | SCREW               | 01  |
| 14          | 212059-B         | ピンジピン           | PIN                 | 01  |
| 15          | 212668           | 補助板             | AUXILIARY PLATE     | 01  |
| 16          | 005030           | 平ネジ / C1 × 2.3  | SCREW               | 01  |
| 17          | 210370           | 押エ爪             | PRESSER FOOT FINGER | 01  |
| 18          | 210371           | 押エ爪             | PRESSER FOOT FINGER | 01  |
| 19          | 201396B          | 押エ爪             | PRESSER FOOT FINGER | 01  |
| 20          | 201310A          | 押エ爪             | PRESSER FOOT FINGER | 01  |
| 21          | 001229           | 平ネジ / C3 × 4.5  | SCREW               | 01  |
| 22          | 211557           | 補助押エ            | FABRIC GUARD        | 01  |
| 23          | 001231           | 平ネジ / C1 × 3.4  | SCREW               | 01  |
| 24          | 274064           | フィンガーガード        | FINGER GUARD        | 01  |
| 25          | 274063           | ネジリバネ           | SPRING              | 01  |

●\*＝販売不可

●XXXXXXはゲージパーツです。

168-181頁のゲージパーツ表で確認してください。

●\*＝ Not for sale basically

●XXXXXX is one of the gauge parts.

Please confirm the correct part by the gauge parts lists on pages8-9.

| 形式<br>MACHINE TYPE<br>/SPEC. | ゲージ<br>GAUGE | 針板<br>NEEDLE<br>PLATE | 主送り歯(組)<br>MAIN FEED<br>DOG ASS. | 主送り歯本体<br>MAIN FEED<br>DOG | 補助送り歯<br>AUX. FEED<br>DOG | 差動送り歯<br>DIFF. FEED<br>DOG | 押エ(組)<br>PRESSER<br>FOOT ASS. | 上ルーバー<br>UPPER<br>LOOPER | 上スプレッダー<br>UPPER<br>SPREADER | 下ルーバー<br>LOWER<br>LOOPER | 二重縫ルーバー<br>CHAINSTITCH<br>LOOPER |
|------------------------------|--------------|-----------------------|----------------------------------|----------------------------|---------------------------|----------------------------|-------------------------------|--------------------------|------------------------------|--------------------------|----------------------------------|
|                              |              |                       |                                  |                            |                           |                            |                               |                          |                              |                          |                                  |
| (15)<br>EX3216N-01/222       | 3            | 4                     | 277583P40                        | (277377-13)                | (277318B13)               | 277325-13                  | 211909B<br>211910B            | 277010 # 2               | 277014A # 8                  | 277015                   | 277018                           |
|                              |              | 5                     | " 50                             |                            |                           |                            |                               |                          |                              |                          |                                  |
| (15)<br>EX3216N-01/232       | 3            | 4                     | 277581P40                        | (277375-13)                | (277318B13)               | 277330-13                  | 277188                        | 277010 # 2               | 277014A # 8                  | 277015                   | 277018                           |
|                              |              | 5                     | " 50                             |                            |                           |                            | 277187                        |                          |                              |                          |                                  |
|                              | 5            | 5                     | 277582P50                        |                            |                           | 277329-13                  | 277188                        |                          |                              |                          |                                  |
|                              |              | 6                     | " 80                             |                            |                           |                            |                               |                          |                              |                          |                                  |

| 形式<br>MACHINE TYPE<br>/SPEC. | ゲージ |    | 上メス                                 |                        | 下メス<br>LOWER<br>KNIFE | オーバー針受 |        | 二重縫針受  |        | 針留<br>NEEDLE<br>HOLDER | 針留糸道<br>THREAD<br>GUIDE<br>(NDL HOLDER) | 針<br>NEEDLE     |
|------------------------------|-----|----|-------------------------------------|------------------------|-----------------------|--------|--------|--------|--------|------------------------|---|-----------------|
|                              | NG  | SW | 平メス<br>UPPER KNIFE<br>FLAT<br>KNIFE | 角メス<br>ANGLED<br>KNIFE |                       | 前      | 後      | 前      | 後      |                        |   |                 |
|                              |     |    |                                     |                        |                       |        |        |        |        |                        |   |                 |
| (15)<br>EX3216N-01/222       | 3   | 4  | 202527A                             | —                      | 202295                | 277007 | 277004 | 277008 | 277006 | 277027-92              | 275030                                  | DC × 27<br># 11 |
|                              |     | 5  |                                     |                        |                       |        |        |        |        |                        |   |                 |
| (15)<br>EX3216N-01/232       | 3   | 4  | 202527A                             | —                      | 202295                | 277007 | 277004 | 277008 | 277006 | 277027-92              | 275030                                  | DC × 27<br># 11 |
|                              |     | 5  |                                     |                        |                       |        |        |        |        |                        |   |                 |
|                              | 5   | 5  |                                     |                        |                       |        |        |        |        | 277028-92              |   |                 |
|                              |     | 6  |                                     |                        |                       |        |        |        |        |                        |   |                 |

| 形式<br>MACHINE TYPE<br>/SPEC. | ゲージ |    | 針板<br>NEEDLE<br>PLATE | 主送り歯 (組)              |              | 主送り歯本体<br>MAIN FEED<br>DOG | 補助送り歯<br>AUX. FEED<br>DOG | 差動送り歯<br>DIFF. FEED<br>DOG | 押エ (組)           | 上ルーバー                   | 下ルーバー            |
|------------------------------|-----|----|-----------------------|-----------------------|--------------|----------------------------|---------------------------|----------------------------|------------------|-------------------------|------------------|
|                              | NG  | SW |                       | MAIN FEED<br>DOG ASS. | 277372 - 16F | (277304B16F)               | (277318B13)               | 277305 - 16F               | 277214<br>277215 | 277010 #2<br>277010B #6 | 277015<br>277015 |
| EX5204N - 01/ 232(K)         | -   | 3  | 277559P30             | -                     | -            | -                          | -                         | -                          | -                | -                       | -                |
|                              |     | 4  | " 40                  |                       |              |                            |                           |                            |                  |                         |                  |
|                              |     | 5  | " 50                  |                       |              |                            |                           |                            |                  |                         |                  |
| EX5214N - 01/ 282(K)         | 2   | 3  | 277580P30             | -                     | -            | -                          | -                         | -                          | -                | -                       | -                |
|                              |     | 4  | " 40                  |                       |              |                            |                           |                            |                  |                         |                  |

| 形式<br>MACHINE TYPE<br>/SPEC. | ゲージ |    | 上メス                |                        | 下メス    | 針受                         |           | 針留          | 針留糸道<br>THREAD<br>GUIDE<br>(NDL HOLDER) | 針              |
|------------------------------|-----|----|--------------------|------------------------|--------|----------------------------|-----------|-------------|---|----------------|
|                              | NG  | SW | 平メス<br>UPPER KNIFE | 角メス<br>ANGLED<br>KNIFE |        | 前<br>NEEDLE GUARD<br>FRONT | 後<br>REAR |             |   |                |
| EX5204N - 01/ 232(K)         | -   | 3  | 201121A            | 210755                 | 201127 | 277005                     | 277004    | 179630 - 92 | 275019A                                 | DC X 27<br># 9 |
|                              |     | 4  |                    |                        | 202295 |                            |           |             |   |                |
|                              |     | 5  |                    |                        |        |                            |           |             |   |                |
| EX5214N - 01/ 282(K)         | 2   | 3  | 201121A            | 210755                 | 201127 | 277005                     | 277004    | 277022 - 92 | 275019B                                 | DC X 27<br># 9 |
|                              |     | 4  |                    |                        | 202295 |                            |           |             |   |                |

# INDEX

| PART NO.   | PAGE | NO. REF. | PART NO.  | PAGE | NO. REF. | PART NO. | PAGE | NO. REF. | PART NO. | PAGE | NO. REF. | PART NO. | PAGE | NO. REF. |
|------------|------|----------|-----------|------|----------|----------|------|----------|----------|------|----------|----------|------|----------|
| 1229       | 7    | 21       | 277375-13 | 8    | 10       |          |      |          |          |      |          |          |      |          |
| 1231       | 7    | 23       | 277376-13 | 8    | 7        |          |      |          |          |      |          |          |      |          |
| 1459       | 5    | 9        | 277377-13 | 8    | 9        |          |      |          |          |      |          |          |      |          |
| 3150       | 7    | 4        | 277559P30 | 9    | 1        |          |      |          |          |      |          |          |      |          |
| 4548       | 5    | 5        | 277559P40 | 9    | 2        |          |      |          |          |      |          |          |      |          |
| 4821       | 5    | 22       | 277559P50 | 9    | 3        |          |      |          |          |      |          |          |      |          |
| 5030       | 7    | 18       | 277560P30 | 9    | 4        |          |      |          |          |      |          |          |      |          |
| 5089       | 7    | 9        | 277560P40 | 9    | 5        |          |      |          |          |      |          |          |      |          |
| 7013       | 7    | 13       | 277561P40 | 8    | 3        |          |      |          |          |      |          |          |      |          |
| 7014       | 5    | 11       | 277561P50 | 8    | 4        |          |      |          |          |      |          |          |      |          |
| 7018       | 5    | 19       | 277562P50 | 8    | 5        |          |      |          |          |      |          |          |      |          |
| 7021       | 5    | 18       | 277562P80 | 8    | 8        |          |      |          |          |      |          |          |      |          |
| 7059       | 5    | 13       | 277563P40 | 8    | 1        |          |      |          |          |      |          |          |      |          |
| 7151       | 3    | 8        | 277563P50 | 8    | 2        |          |      |          |          |      |          |          |      |          |
| 179630-92  | 9    | 20       | 300248    | 7    | 10       |          |      |          |          |      |          |          |      |          |
| 201022     | 5    | 8        | 303448    | 5    | 20       |          |      |          |          |      |          |          |      |          |
| 201121A    | 9    | 15       |           |      |          |          |      |          |          |      |          |          |      |          |
| 201127     | 9    | 17       |           |      |          |          |      |          |          |      |          |          |      |          |
| 201310A    | 7    | 20       |           |      |          |          |      |          |          |      |          |          |      |          |
| 201396B    | 7    | 19       |           |      |          |          |      |          |          |      |          |          |      |          |
| 202295     | 8    | 25       |           |      |          |          |      |          |          |      |          |          |      |          |
| 202522     | 5    | 2        |           |      |          |          |      |          |          |      |          |          |      |          |
| 202527A    | 8    | 24       |           |      |          |          |      |          |          |      |          |          |      |          |
| 210370     | 7    | 17       |           |      |          |          |      |          |          |      |          |          |      |          |
| 210371     | 7    | 18       |           |      |          |          |      |          |          |      |          |          |      |          |
| 210755     | 9    | 18       |           |      |          |          |      |          |          |      |          |          |      |          |
| 211301     | 5    | 14       |           |      |          |          |      |          |          |      |          |          |      |          |
| 211557     | 7    | 22       |           |      |          |          |      |          |          |      |          |          |      |          |
| 211909B    | 8    | 15       |           |      |          |          |      |          |          |      |          |          |      |          |
| 211910B    | 8    | 18       |           |      |          |          |      |          |          |      |          |          |      |          |
| 211915A    | 7    | 8        |           |      |          |          |      |          |          |      |          |          |      |          |
| 211918A    | 7    | 7        |           |      |          |          |      |          |          |      |          |          |      |          |
| 211917     | 7    | 8        |           |      |          |          |      |          |          |      |          |          |      |          |
| 211918     | 7    | 3        |           |      |          |          |      |          |          |      |          |          |      |          |
| 211919     | 7    | 2        |           |      |          |          |      |          |          |      |          |          |      |          |
| 211920     | 7    | 5        |           |      |          |          |      |          |          |      |          |          |      |          |
| 212059-B   | 7    | 14       |           |      |          |          |      |          |          |      |          |          |      |          |
| 212668     | 7    | 15       |           |      |          |          |      |          |          |      |          |          |      |          |
| 232508     | 5    | 8        |           |      |          |          |      |          |          |      |          |          |      |          |
| 240017     | 5    | 7        |           |      |          |          |      |          |          |      |          |          |      |          |
| 240321     | 5    | 17       |           |      |          |          |      |          |          |      |          |          |      |          |
| 240434     | 5    | 3        |           |      |          |          |      |          |          |      |          |          |      |          |
| 252089     | 5    | 12       |           |      |          |          |      |          |          |      |          |          |      |          |
| 252658     | 5    | 18       |           |      |          |          |      |          |          |      |          |          |      |          |
| 270001C9S  | 3    | 2        |           |      |          |          |      |          |          |      |          |          |      |          |
| 270001D9S  | 3    | 1        |           |      |          |          |      |          |          |      |          |          |      |          |
| 270030DUB  | 3    | 3        |           |      |          |          |      |          |          |      |          |          |      |          |
| 270076B    | 5    | 21       |           |      |          |          |      |          |          |      |          |          |      |          |
| 270500E    | 3    | 5        |           |      |          |          |      |          |          |      |          |          |      |          |
| 270500F    | 3    | 4        |           |      |          |          |      |          |          |      |          |          |      |          |
| 272553     | 5    | 4        |           |      |          |          |      |          |          |      |          |          |      |          |
| 272554     | 5    | 1        |           |      |          |          |      |          |          |      |          |          |      |          |
| 272555-92  | 5    | 10       |           |      |          |          |      |          |          |      |          |          |      |          |
| 272556     | 5    | 15       |           |      |          |          |      |          |          |      |          |          |      |          |
| 274063     | 7    | 25       |           |      |          |          |      |          |          |      |          |          |      |          |
| 274064     | 7    | 24       |           |      |          |          |      |          |          |      |          |          |      |          |
| 275019A    | 9    | 22       |           |      |          |          |      |          |          |      |          |          |      |          |
| 275019B    | 9    | 23       |           |      |          |          |      |          |          |      |          |          |      |          |
| 275030     | 8    | 32       |           |      |          |          |      |          |          |      |          |          |      |          |
| 277004     | 8    | 27       |           |      |          |          |      |          |          |      |          |          |      |          |
| 277004     | 9    | 19       |           |      |          |          |      |          |          |      |          |          |      |          |
| 277005     | 9    | 18       |           |      |          |          |      |          |          |      |          |          |      |          |
| 277006     | 8    | 29       |           |      |          |          |      |          |          |      |          |          |      |          |
| 277007     | 8    | 28       |           |      |          |          |      |          |          |      |          |          |      |          |
| 277008     | 8    | 28       |           |      |          |          |      |          |          |      |          |          |      |          |
| 277010#2   | 8    | 20       |           |      |          |          |      |          |          |      |          |          |      |          |
| 277010B#8  | 9    | 14       |           |      |          |          |      |          |          |      |          |          |      |          |
| 277014A#8  | 8    | 21       |           |      |          |          |      |          |          |      |          |          |      |          |
| 277015     | 8    | 22       |           |      |          |          |      |          |          |      |          |          |      |          |
| 277018     | 8    | 23       |           |      |          |          |      |          |          |      |          |          |      |          |
| 277022-92  | 9    | 21       |           |      |          |          |      |          |          |      |          |          |      |          |
| 277027-92  | 8    | 30       |           |      |          |          |      |          |          |      |          |          |      |          |
| 277028-92  | 8    | 31       |           |      |          |          |      |          |          |      |          |          |      |          |
| 277136     | 7    | 12       |           |      |          |          |      |          |          |      |          |          |      |          |
| 277186     | 8    | 17       |           |      |          |          |      |          |          |      |          |          |      |          |
| 277187     | 8    | 18       |           |      |          |          |      |          |          |      |          |          |      |          |
| 277188     | 8    | 19       |           |      |          |          |      |          |          |      |          |          |      |          |
| 277214     | 9    | 10       |           |      |          |          |      |          |          |      |          |          |      |          |
| 277215     | 9    | 11       |           |      |          |          |      |          |          |      |          |          |      |          |
| 277216     | 9    | 12       |           |      |          |          |      |          |          |      |          |          |      |          |
| 277217     | 9    | 13       |           |      |          |          |      |          |          |      |          |          |      |          |
| 277304B16F | 9    | 7        |           |      |          |          |      |          |          |      |          |          |      |          |
| 277305-16F | 9    | 8        |           |      |          |          |      |          |          |      |          |          |      |          |
| 277318B13  | 8    | 11       |           |      |          |          |      |          |          |      |          |          |      |          |
| 277325-13  | 8    | 12       |           |      |          |          |      |          |          |      |          |          |      |          |
| 277329-13  | 8    | 14       |           |      |          |          |      |          |          |      |          |          |      |          |
| 277330-13  | 8    | 13       |           |      |          |          |      |          |          |      |          |          |      |          |
| 277372-16F | 9    | 6        |           |      |          |          |      |          |          |      |          |          |      |          |
| 277373-16F | 9    | 9        |           |      |          |          |      |          |          |      |          |          |      |          |
| 277374-13  | 8    | 8        |           |      |          |          |      |          |          |      |          |          |      |          |

[www.collegesewing.co.uk](http://www.collegesewing.co.uk)



[www.collegesewing.co.uk](http://www.collegesewing.co.uk)



[www.collegesewing.co.uk](http://www.collegesewing.co.uk)



**■ PEGASUS  
SEWING MACHINE MFG.  
CO., LTD.®**



Cat. No.9669 June, 1994

©1994 PEGASUS SEWING MACHINE MFG. CO., LTD.

First edition ; issued in June 1994

初 版(1994年6月発行)