

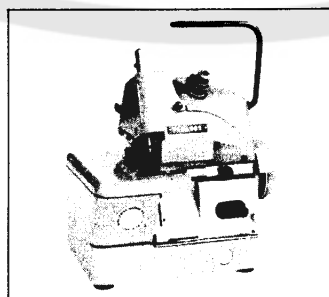


**PEGASUS®**

INDUSTRIAL SEWING MACHINE

# **PARTS LIST**

## **MODEL DCP**



[www.collegesewing.co.uk](http://www.collegesewing.co.uk)



## IN ORDERING PARTS

This list has been arranged to simplify ordering repair parts for, on the basis of model DCP-101, model DCP-101W, 103, 105, 106, 109 & 109W.

Various sections of the mechanisms are shown on each page. On the page opposite the illustrations will be found a listing of the parts with their reference numbers, parts numbers, names, the number of pieces required and the remarks.

Where parts for model DCP-101 and other DCP-100 series machines are not the same, the difference is shown in the remarks column and on the pages 20 to 23. When a part is used for all machines covered by page 2 to 19 of this list, no machine model is mentioned in the remarks column.

In converting DCP-101 to other type, it is necessary to replace the parts used in the original machine to the ones marked "◎" in this list.

The parts marked with "○" should be additionally used.

At the back of this list, a numerical index of all parts is shown. This will facilitate locating the illustration and descriptions when only the part number is known.

In ordering parts from this list, USE ONLY the PART NUMBER in the second column.

Reference number should never be used in ordering parts.

This Parts List applied to the machines manufactured in November, 1974 and is applicable to your machine subject to change without notice.

## パーツ・リスト ご利用に際して

本パーツ・リストは、DCP-101形を基にDCPシリーズミシンの修理用部品を容易にご利用いただけるよう編集されています。

機構別に各頁に収録され、部品図解頁の反対頁には、参照番号、部品番号、名称、数量、備考欄の順で記載されています。

備考欄に機種名を表示した部品は、DCP-101形及び表示された機種に、その部品が共用できることを示しています。

機種名の記載されていない部品は、DCPシリーズの全機種に共用できます。

22頁から25頁にDCP-101形以外のDCPシリーズ各機種の専用部品を記載しています。DCP-101形より、他の機種に変更の場合、DCP-101形に使用している部品を部品番号の左に◎印をつけた部品と交換して下さい。○印の部品は、付け加えて使用して下さい。

本パーツ・リストの26～27頁には、部品番号索引を付し、部品番号のみでその図解、名称等が容易に引出せます。

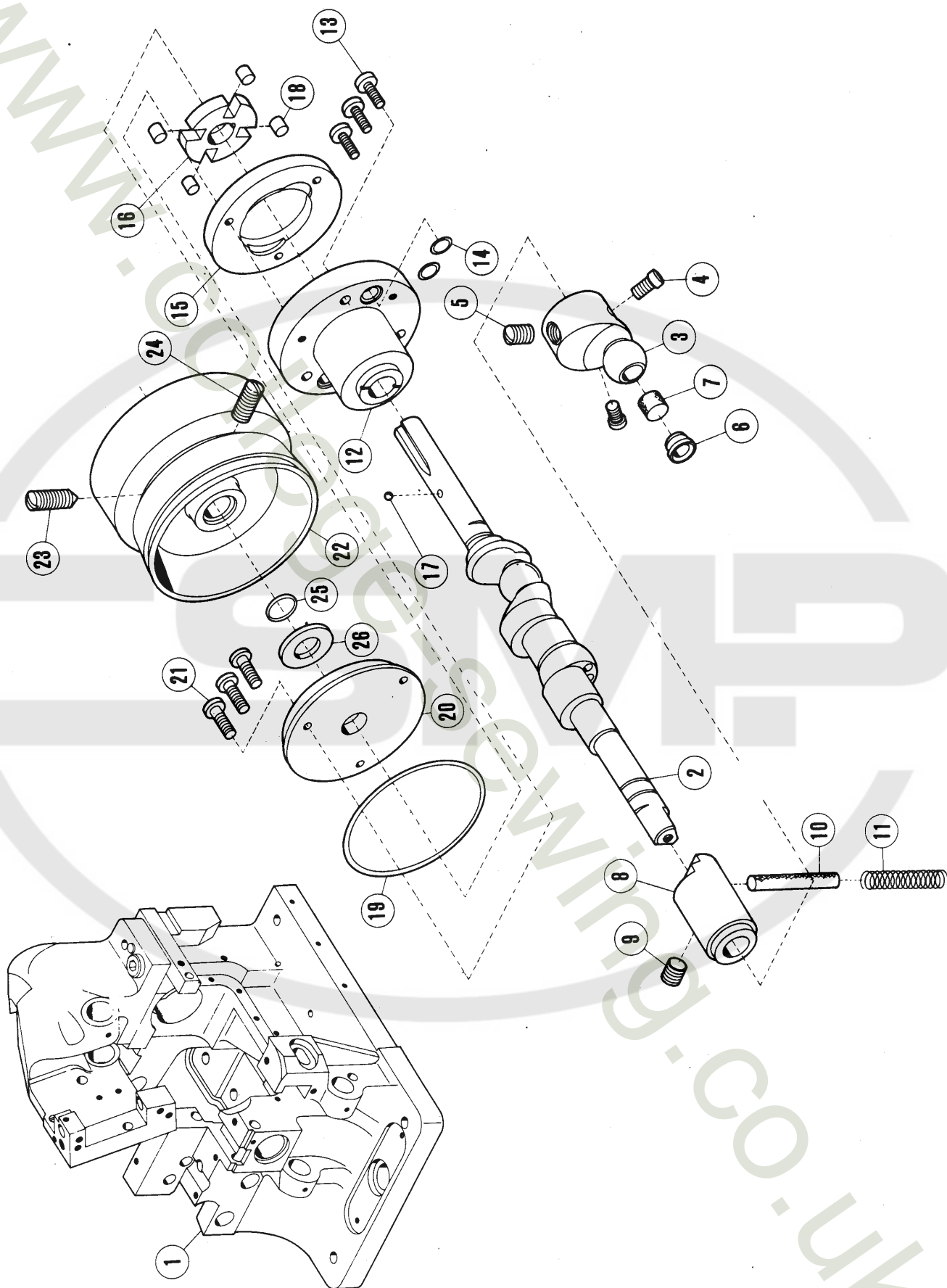
本パーツ・リストに基き、部品ご注文の場合は、参照番号は絶対使用せず部品番号のみを明示して下さい。

本パーツ・リストは、1974年11月現在製造中のミシンを基に作成しています。

本パーツ・リストに記載された部品番号、部品形状等は、設計変更により変える場合があります。

## CONTENTS

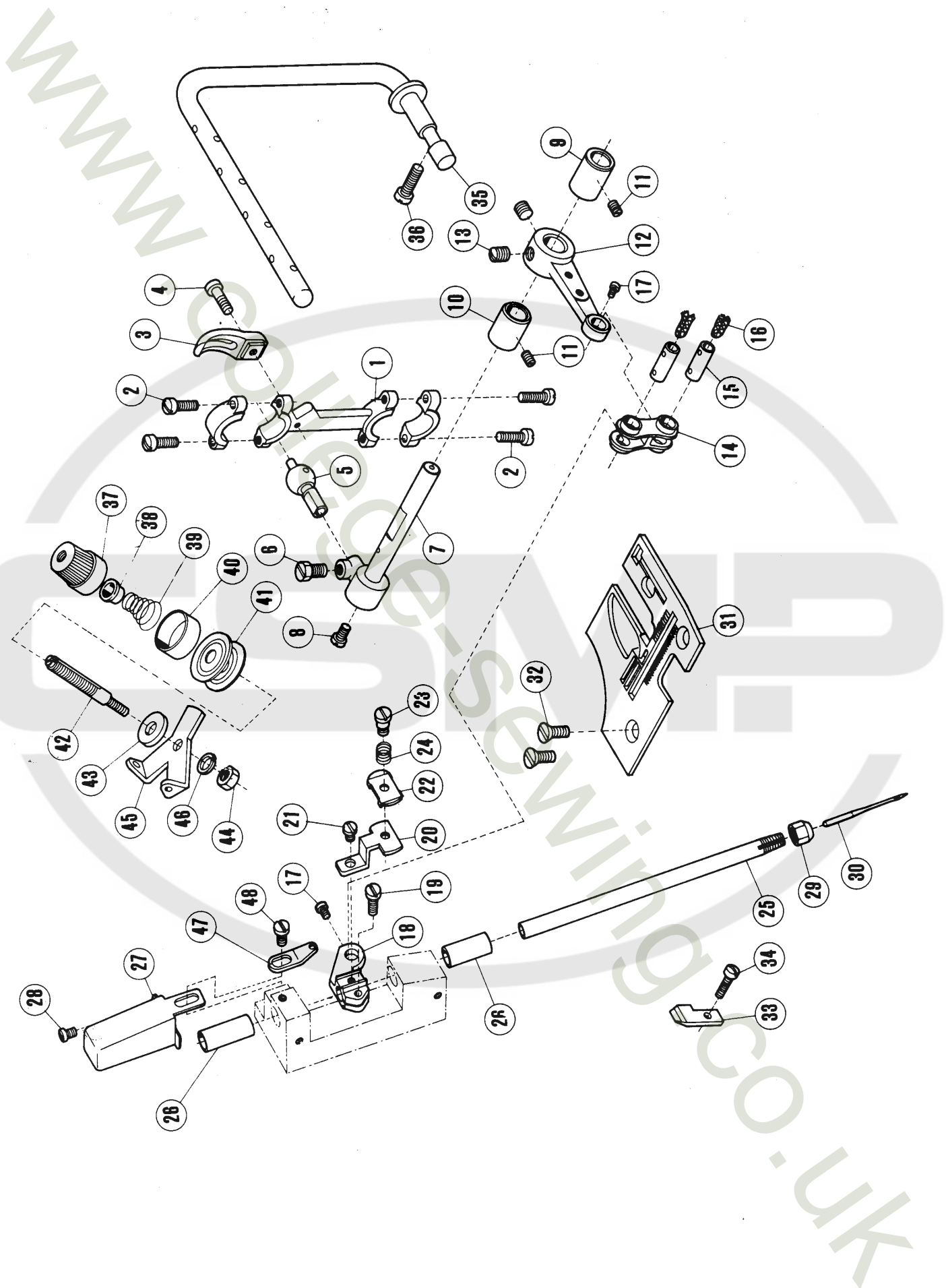
目次	PAGE 頁
MACHINE FRAME, CRANKSHAFT & OIL PUMPING MECHANISM アーム・ベッド・主軸・ポンプ機構	2 ~ 3
NEEDLE DRIVE MECHANISM 針 棒 機 構	4 ~ 5
LOOPER DRIVE MECHANISM 大・小ルーバー機構	6 ~ 7
FEED MECHANISM 送 り 機 構	8 ~ 9
UPPER & LOWER KNIFE MECHANISM 上・下メス機構	10 ~ 11
PRESSER FOOT & LIFTING MECHANISM 押 エ 機 構	12 ~ 13
LUBRICATING MECHANISM 給 油 機 構	14 ~ 15
CLOTH PLATE & MISCELLANEOUS COVERS (1) カバー・外装関係(1)	16 ~ 17
MACHINE FRAME (FRONT) & MISCELLANEOUS COVERS (2) カバー・外装関係(2)	18 ~ 19
PARTS FOR MODEL DCP-101W, 103 & 105 ONLY DCP-101W, 103, 105 型専用部品	20 ~ 21
PARTS FOR MODEL DCP-106, 109 & 109W ONLY DCP-106, 109, 109W 型専用部品	22 ~ 23
ACCESSORIES 付 属 品	24 ~ 25
INDEX 索 引	26 ~ 27



# MACHINE FRAME, CRANKSHAFT & OIL PUMPING MECHANISM

## アームベッド・主軸・ポンプ機構

Ref. No. 参照番号	Parts No. 部品番号	Name	名 称	Qt. 数量	Remarks 備 考
1	200510	Arm-bed, complete with 200003, 200511, 1936x2, & 137950x2	アームベッド(組)200003, 200511, 1936x2, 137950x2トノ組	1	
	200003 A	Arm	アーム	1	
	200511	Bed	ベッド	1	
	1936 A	Arm-bed screw	アーム締付ネジ	2	
	137950	" taper pin	アームベッドテーパピン	2	
2	200317A	Crankshaft, complete with 200321B & 200605	クランクシャフト(組)200321B, 200605トノ組	1	DCP-101W, 105 109 & 109W only用
	200605	" oil ring	" 油受リング	1	
3	200222	" crank	エキセンクランク	1	
4	5026	" " position screw	" 調節ネジ	2	
5	2022-3	" " screw	" 止ネジ	1	
6	200607	" " oil cap	" 油栓	1	
7	200389	" " " wick	" 用フェルト	1	
8	200221	" bushing	小ブッシュ	1	
9	2022-3	" " screw	" 止ネジ	1	
10	200219	" " oil wick	" 吸油口用フェルト	1	
11	200220	" " " " spring	" " 押エバネ	1	
12	200291	" flanged bushing	大ブッシュ(組)198072, 198073ノ組	1	
13	1175-3	" " " screw	" 止ネジ	3	
14	200020	Oil pumping 'O' ring	ポンプ吸吐口用"O"リング	2	
15	200018 A	Stator	ステーター	1	
16	200015	Rotor	ローター	1	
17	200016	" key ball (1/8")	" 廻り止メボール(1/8"鋼球)	1	
18	200017	" roller	羽根ローラー	4	
19	200021	" cover plate 'O' ring	ポンプ外周用"O"リング	1	
20	200292	" " plate	" 蓋	1	
21	5010	" " " screw	" " 止ネジ	3	
22	200202B	Pulley	Vベルト用プーリー	1	
23	5052	" position screw	" 止ネジ(先有)	1	
24	5051	" screw	" (先無)	1	
25	200030	" 'O' ring	プーリー用"O"リング小	1	
26	200024	" thrust washer	" スラストワッシャ	1	

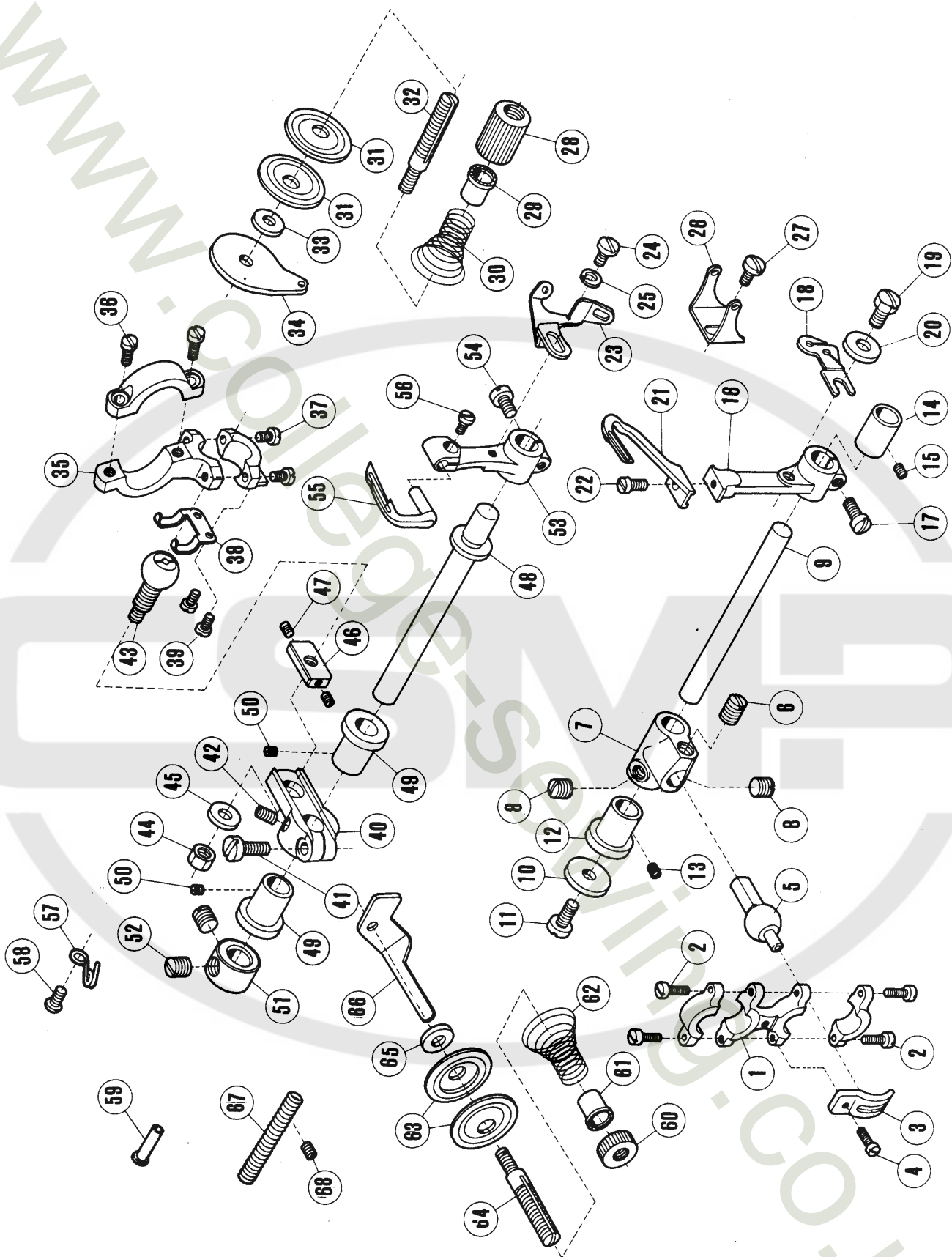


# NEEDLE DRIVE MECHANISM

## 針 棒 機 構

Ref. No. 参照番号	Parts No. 部品番号	Name	名 称	Qt. 数量	Remarks 備 考
	200034	Needle bar drive connection, complete with 200033 & 2213-1x4	大ロッド(組)200033, 2213-1x4ノ組	1	
1	200033	" " " connection	大ロッド	1	
2	2213-1	" " " " cap screw	〃 蓋止ネジ	4	
3	137130	" " " " guide	〃 振り止メ	1	
4	5010	" " " " " screw	〃 〃 止ネジ	1	
5	200265	" " " " " ball stud	針棒後クランク球	1	
6	2022-4	" " " " " " screw	〃 〃 止ネジ	1	
7	200534	" " " " arm pivot shaft	〃 クランク軸	1	
8	1234	" " " " " " oil cap screw	〃 〃 蓋ネジ	1	
9	200037	" " " " " " bushing (front)	〃 〃 プッシュ(前)	1	
10	200038	" " " " " " " (rear)	〃 〃 〃 (後)	1	
11	1457	" " " " " " " screw	〃 〃 〃 止ネジ	2	
12	200652	" " " " arm (front)	〃 前クランク	1	
13	2022	" " " " " " screw	〃 〃 止ネジ	2	
14	200653	" " " " link	〃 リンク	1	
15	200654	" " " " " pin	〃 〃 ピン	2	
16	202177	" " " " " " oil wick	〃 〃 〃 油紐	2	
17	1222	" " " " " " screw	〃 〃 〃 止ネジ	2	
18	200655	" " " " clamp	〃 抱キ	1	
19	1170-3	" " " " " screw	〃 〃 止ネジ	1	
20	200040	Secondary needle thread tension plate	小調子台	1	DCP-101, 101W, 105, 106, 109 & 109W only用
21	1186	" " " " " " screw	〃 止ネジ	1	
22	200041	" " " " " disc	小調子皿	1	
23	9070-2	" " " " " " post	〃 止ネジ	1	
24	200205	" " " " " " spring	小調子バネ	1	
25	137122	Needle bar	針棒	1	DCP-101, 101W, 103, & 106 only用
26	137123	" " " " bushing	〃 プッシュ	2	
27	200696	" " " " cap cover	〃 キャップ	1	
28	1186	" " " " " screw	〃 〃 止ネジ	1	
29	3119	" " " " clamp nut	針止ナット	1	DCP-101, 101W, 103, & 106 only用
30	D C x1	Needle, size No.9 (for domestics) or No.11 (for exports)	針 #9 (国内用) 〃 #11 (貿易用)	1	
31	200044A	" " plate	針板	1	
32	1732	" " " screw	〃 止ネジ	2	DCP-101 only用
33	137564	" " guard	針受	1	
34	1170-1	" " " screw	〃 止ネジ	1	
35	200203	Thread guide	上糸道棒	1	
36	2133-1	" " " screw	〃 止ネジ	1	
	200050	Primary needle thread tension, complete with 201035A, 202278, 201037, 201039, 101111x2 & 1817-2A	針糸調子(組) 201035A, 202278, 201037, 201039, 101111x2, 1817-2Aノ組	1	
37	201035A	" " " " " nut	〃 ナット	1	
38	202278	" " " " " spring bushing	〃 〃 止パイプ	1	
39	201037	" " " " " spring (heavy)	〃 バネ(強)	1	
40	201039	" " " " " " cap	〃 受皿	1	
41	101111	" " " " " disc	〃 皿	2	
42	1817-2A	" " " " " post	〃 棒	1	
43	137142	" " " " " washer	〃 〃 座金	1	
44	3044	" " " " " " nut	〃 〃 ナット	1	
45	200204	" " " " " plate	〃 台	1	DCP-101, 101W, 103, & 106 only用
46	202286	" " " " " " washer	〃 〃 バネ座金	1	
47	200045	Needle thread guide	上糸道	1	
48	1175-2	" " " " " screw	〃 止ネジ	1	



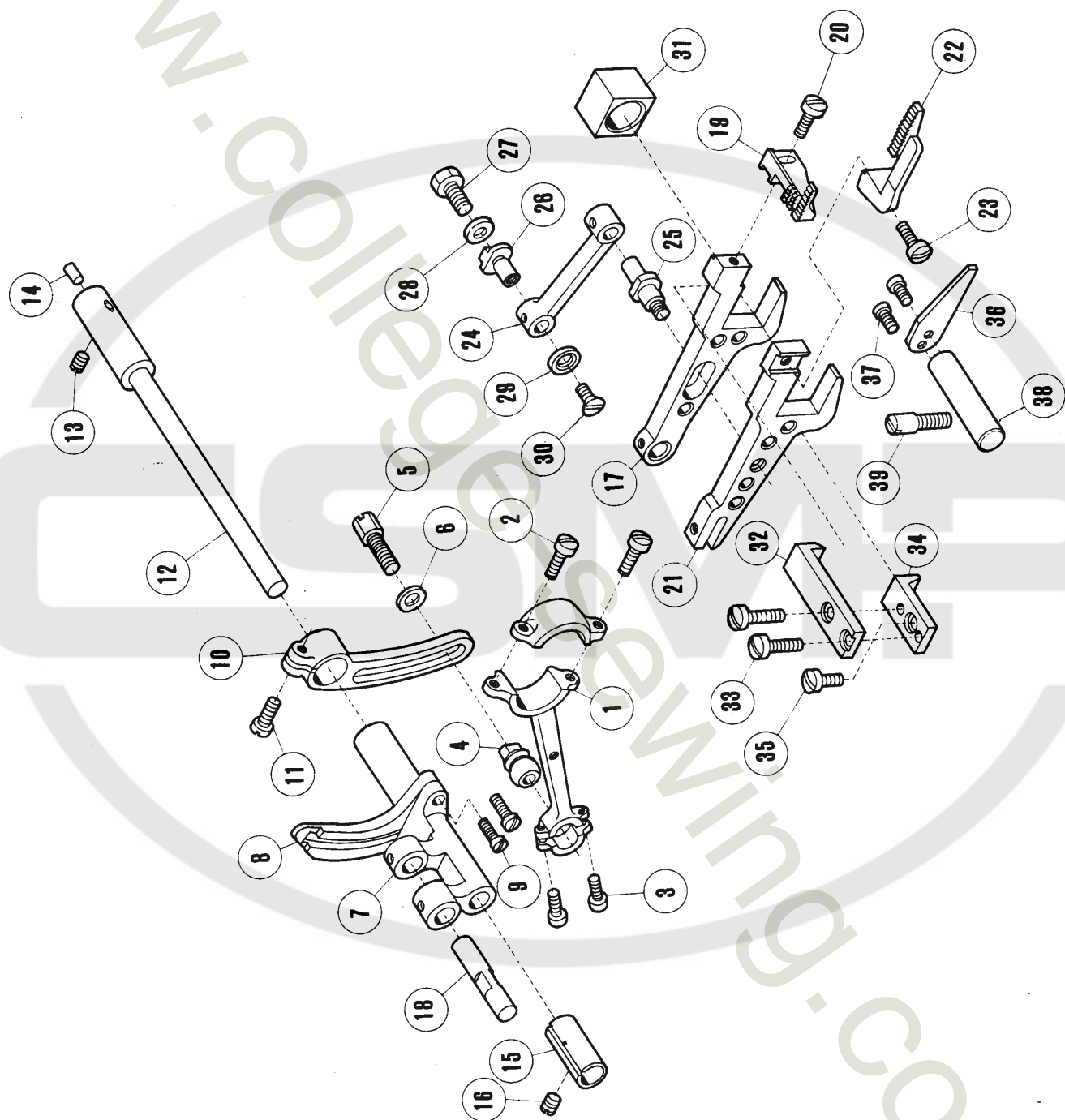




# LOOPER DRIVE MECHANISM

## 大・小ルーパー機構

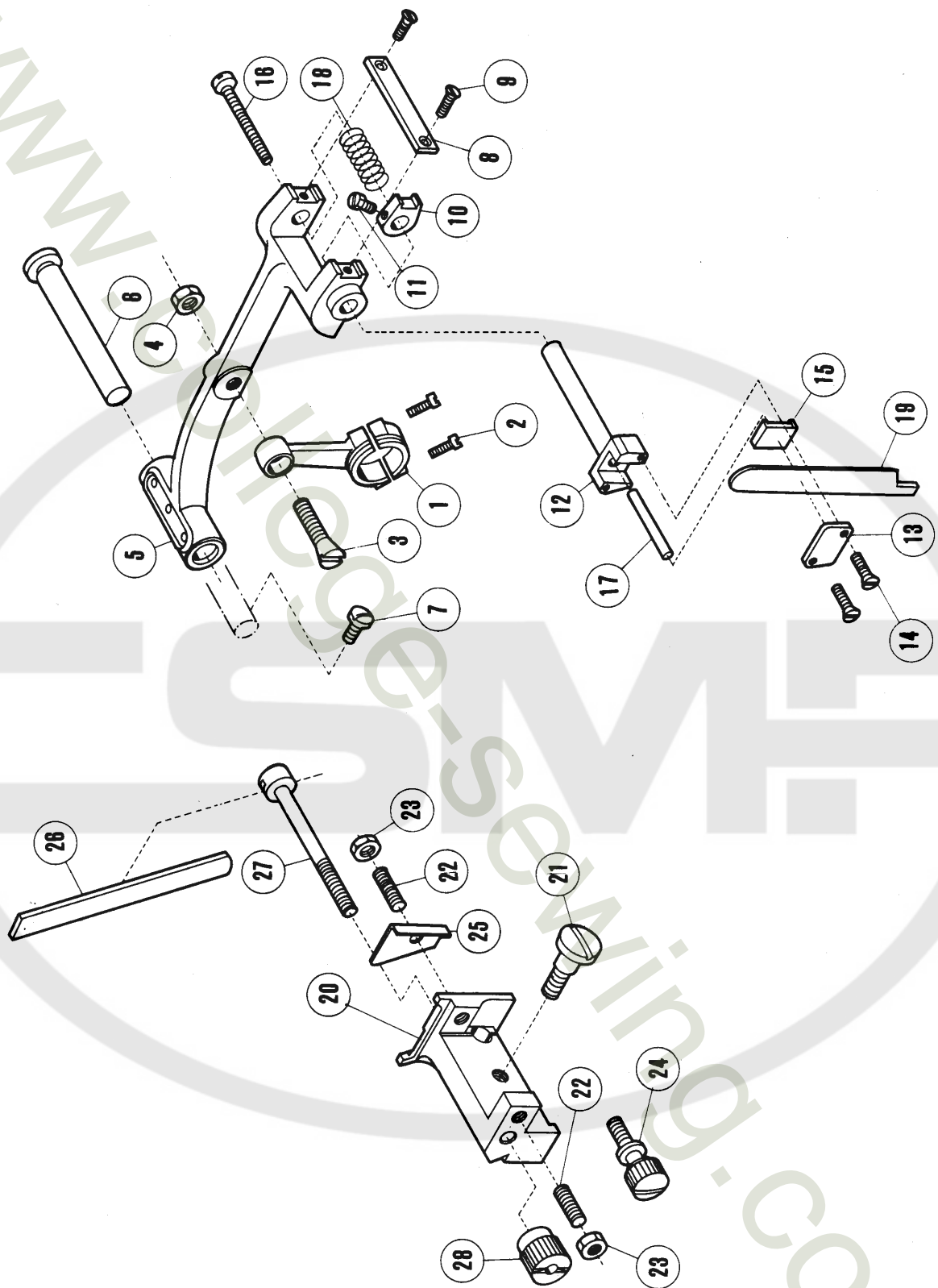
Ref. No. 参照番号	Parts No. 部品番号	Name	名 称	Qt. 数量	Remarks 備 考
	200617	Right looper drive connection, complete with 200618 & 2213-1x4	小ロッド(組)200618, 2213-1x4ノ組	1	
1	200618	" " " connection	小ロッド	1	
2	2213-1	" " " " cap screw	〃 蓋止ネジ	4	
3	137130	" " " " guide	〃 振り止メ	1	
4	5010	" " " " screw	〃 〃 止ネジ	1	
5	137121	" " " " ball stud	〃 球	1	
6	2022-3	" " " " screw	〃 〃 止ネジ	1	
7	200053	" " lever crank	大ルーパークランク	1	
8	2022	" " " " screw	〃 〃 止ネジ	2	
9	200054	" " " " shaft	大ルーパー台軸	1	
10	200055	" " " " thrust washer	〃 スラストワッシャー	1	
11	5064	" " " " screw	〃 〃 止ネジ	1	
12	200057	" " " " flanged bushing	〃 ブッシュ(ツバ付)	1	
13	1457	" " " " screw	〃 〃 止ネジ	1	
14	200058	" " " " bushing	〃 〃 (ツバ無)	1	
15	1457	" " " " screw	〃 〃 止ネジ	1	
16	200059	" " lever	大ルーパー台	1	
17	2213-1	" " " " screw	〃 締付ネジ	1	
18	200062	Left looper thread take-up	〃 糸道	1	
19	2193	" " " " screw	〃 〃 止ネジ	1	
20	137142	" " " " washer	〃 〃 〃 座金	1	
21	137301	Right looper	大ルーパー	1	DCP-101,101W & 106 only用
22	1196	" " " screw	〃 〃 止ネジ	1	
23	200063	thread take-up	〃 糸サバキ	1	
24	1202	" " " " screw	〃 〃 止ネジ	1	
25	201252	" " " " spring washer	〃 〃 〃 バネ座金	1	
26	200226	" " " " guide	前糸道	1	
27	1202	" " " " screw	〃 〃 止ネジ	1	
	200064	tension, complete with 200065, 101113前糸調子(組)200065, 101113, 137114, 101111x2, 137114, 101111x2 & 1817-2A	1817-2Aノ組	1	
28	200065	" " " " nut	〃 ナット	1	
29	101113	" " " " spring bushing	〃 〃 止パイプ	1	
30	137114	" " " " spring (light)	〃 バネ(弱)	1	
31	101111	" " " " disc	〃 皿	2	
32	1817-2A	" " " " post	〃 棒	1	
33	137142	" " " " washer	〃 〃 座金	1	
34	137106	" " " " plate	〃 台	1	
	200513	Left looper drive connection, complete with 200501, 5002x2 & 5029x2	小ルーパー振りロッド(組)200501, 5002x2 5029x2ノ組	1	
35	200501	" " " " connection	小ルーパー振りロッド	1	
36	5002	" " " " screw (large)	〃 〃 蓋止ネジ(大)	2	
37	5029	" " " " " (small)	〃 〃 〃 (小)	2	
38	200070	" " " " guide	〃 〃 振り止メ	1	
39	5012	" " " " " screw	〃 〃 〃 止ネジ	2	
40	200373	" " lever crank	小ルーパークランク	1	
41	1156	" " " " clamp screw	〃 〃 抱締ネジ	1	
42	1458	" " " " screw	〃 〃 止ネジ	1	
43	200293A	" " " " ball stud	〃 〃 球	1	
44	5137	" " " " " nut	〃 〃 ナット	1	
45	137142	" " " " " washer	〃 〃 座金	1	
46	200294	" " drive connection guide collar	小ルーパー振りロッド振り止メカラー	1	
47	1892	" " " " " screw	〃 〃 〃 止ネジ	2	
48	200073	" " lever shaft	小ルーパー台軸	1	
49	200057	" " " " bushing	〃 〃 ブッシュ	2	
50	1457	" " " " " screw	〃 〃 〃 止ネジ	2	
51	200074	" " " " thrust collar	〃 〃 スラストカラー	1	
52	2022	" " " " " screw	〃 〃 〃 止ネジ	2	
53	200225	" " lever	小ルーパー台	1	
54	5002	" " " " screw	〃 〃 抱締ネジ	1	
55	137302	" " looper	小ルーパー	1	
56	5053	" " " " screw	〃 〃 止ネジ	1	
57	193174	" " " " thread eyelet	後カバー糸道	1	
58	1326	" " " " " screw	〃 〃 止ネジ	1	
59	200077	" " " " guide	大カバー裏糸道パイプ	1	
	200078	tension, complete with 3056, 101113, 137115, 101111x2 & 1817-2A	裏糸調子(組)3056, 101113, 137115, 101111x2, 1817-2Aノ組	1	
60	3056	" " " " " nut	〃 ナット	1	
61	101113	" " " " " spring bushing	〃 〃 止パイプ	1	
62	137115	" " " " " spring (medium)	〃 バネ(中)	1	
63	101111	" " " " " disc	〃 皿	2	
64	1817-2A	" " " " " post	〃 棒	1	
65	137142	" " " " " washer	〃 〃 座金	1	
66	137016	" " " " " plate	〃 〃 台	1	
67	137103	" " thread tube	糸道パイプ	1	
68	1457-1	" " " " " screw	〃 〃 止ネジ	1	



# FEED MECHANISM

## 送り機構

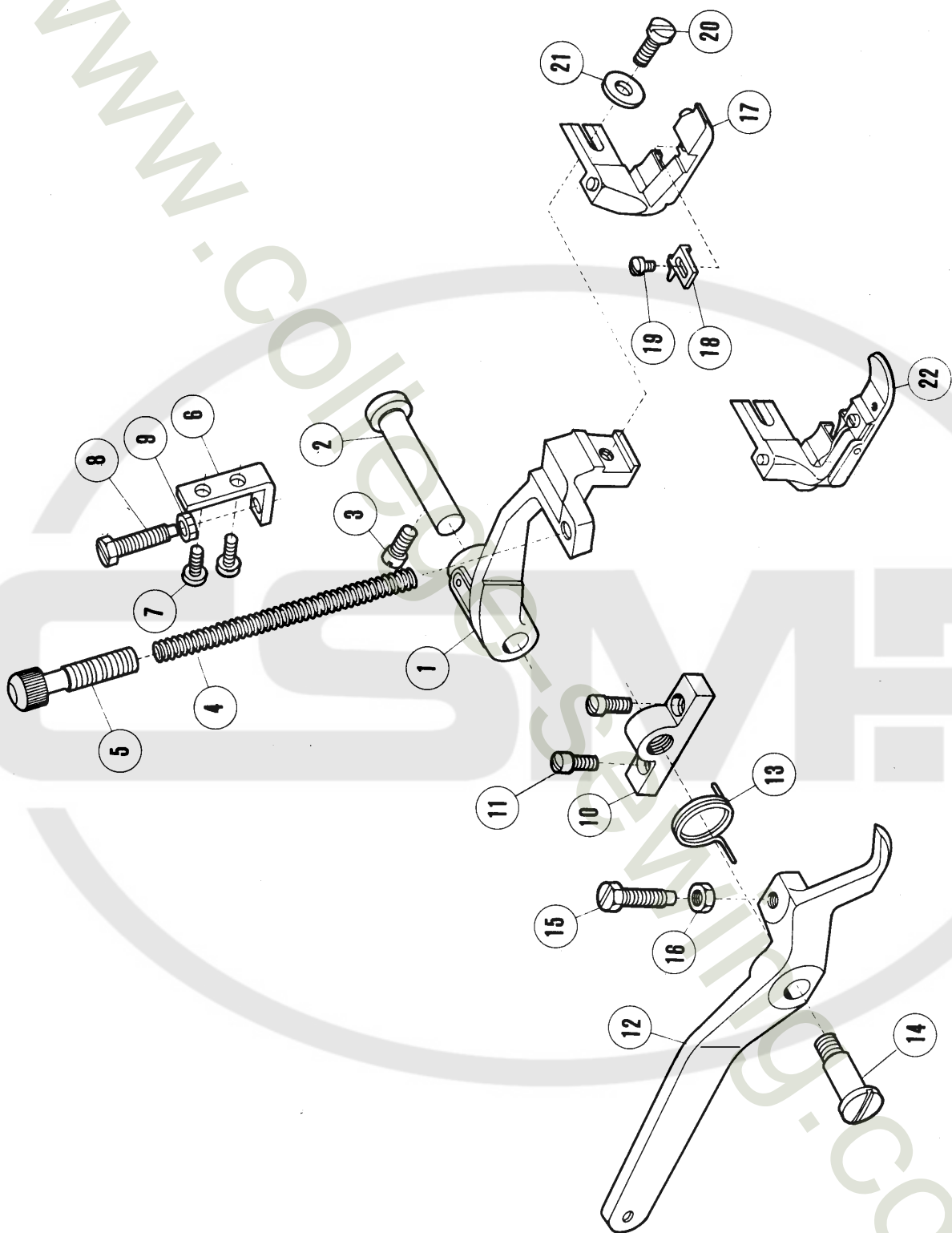
Ref. No. 参照番号	Parts No. 部品番号	Name	名 称	Qt. 数量	Remarks 備 考
	200514	Feed bar drive connection, complete with 200503, 5002x2 & 5003x2	送り前後ロッド(組)200503, 5002x2 5003x2ノ組	1	
1	200503	" " " connection	送り前後ロッド	1	
2	5002	" " " " cap screw (large)	〃 止ネジ大	2	
3	5003	" " " " " (small)	〃 〃 小	2	
4	137419	" " " " ball stud	〃 球	1	
5	5001	" " " " " " screw	〃 〃 止ネジ	1	
6	137142	" " " " " " washer	〃 〃 〃 座金	1	
	200310A	" rocker, complete with 200308, 200309 & 1170-3x2	送りロックシャフト(組)200308, 200309 1170-3x2ノ組	1	
7	200308	" rocker	送りロックシャフト	1	
8	200309	Differential feed regulator	差動送り調節器	1	
9	1170-3	" " " " screw	〃 止ネジ	2	
10	200322	Feed drive segment	送り調節器	1	
11	1156	" " " set screw	〃 抱締ネジ	1	
12	200089	" rocker pivot shaft	送りロックシャフトピン	1	
13	2022-3	" " " " screw	〃 〃 止ネジ	1	
14	202903	" " " " oil wick	〃 〃 油栓	1	
15	137409	" " " " split bushing	割ブッシュ	1	
16	2022	" " " " " " screw	〃 止ネジ	1	
17	200311	Feed bar	送り台	1	
18	200315A	" " hinge pin	〃 ピン	1	
19	200229A	" dog	送り歯	1	DCP-101, 105, & 109 only
20	1175-2	" " screw	〃 止ネジ	1	
21	200312	Differential feed bar	差動送り台	1	
22	200318A	" " dog	差動送り歯	1	DCP-101, 105, & 109 only
23	1175-2	" " " screw	〃 止ネジ	1	
24	200314	" " drive adjusting connection	差動調節桿	1	
25	200316	" " " " " " screw stud	〃 ピン	1	
26	200097	" " " " " stud	差動調節器	1	
27	2308	" " " " " " screw	〃 止ネジ	1	
28	200098	" " " " " " washer	送り調節器止ネジ座金	1	
29	200099	" " " " " " thrust washer	〃 スラストワッシャー	1	
30	3001	" " " " " " " screw	〃 〃 止ネジ	1	
31	200502	Feed lift block	送り上下角玉	1	
32	200081	" bar guide (upper)	送り台案内金(上)	1	
33	1174	" " " " " screw	〃 〃 止ネジ	2	
34	200082	" " " (middle)	〃 (中)	1	
35	5136	" " " " screw	〃 〃 止ネジ	1	
	200085	" " " (lower), complete with 200083, 1170-3x2 & 200084	〃 (下)(組)200083, 1170-3x2 200084ノ組	1	
36	200083	" " " (lower)	送り台案内金(下)	1	
37	1170-3	" " " " " screw	〃 〃 止ネジ	2	
38	200084	" " " " " bracket	〃 〃 土台	1	
39	1419	" " " " " " screw	〃 〃 〃 止ネジ	1	



## UPPER &amp; LOWER KNIFE MECHANISM

## 上・下 メ ス 機 構

Ref. No. 参照番号	Parts No. 部品番号	Name	名 称	Qt. 数量	Remarks 備 考
	200103	Upper knife drive connection, complete with 200102 & 1174x2	上メスロッド(組)200102, 1174x2ノ組	1	
1	200102	" " " connection	上メスロッド	1	
2	1174	" " " " cap screw	〃 蓋止ネジ	2	
3	167005	" " " " stud	〃 テーパーネジ	1	
4	3018	" " " " " nut	〃 〃 ナット	1	
5	200105A	" " lever, complete with 137553 & 5259x2	上メス台 (組)137553, 5259x2トノ組	1	
6	137552	" " " shaft	〃 ピン	1	
7	2133-1	" " " " screw	〃 〃 止ネジ	1	
8	137553	" " guide bar	上メス案内板	1	
9	5259	" " " " screw	〃 〃 止ネジ	2	
10	137554	" " guide	〃 案内	1	
11	5027	" " " screw	〃 〃 止ネジ	1	
	200106	" " carrier, complete with 138555A, 138555-1 & 1399x2	〃 抱キ(組)138555A, 138555-1 1399x2ノ組	1	
12	138555 A	" " carrier	〃 抱キ	1	
13	138555-1	" " " cap plate	〃 〃 蓋	1	
14	5224	" " " " " screw	〃 〃 〃 止ネジ	2	
15	138556	" " clamp	〃 押シ	1	
16	1132	" " " screw	〃 〃 ネジ	1	
17	137560	" " " pin	〃 〃 ピン	1	
18	137558	" " " spring	〃 〃 バネ	1	
19	138559	" knife	上メス	1	
20	137561	Lower knife carrier	下メス台	1	DCP-101, 105, 106, & 109 only用
21	5065	" " " screw	〃 止ネジ	1	
22	1435	" " " stop screw	〃 左・右ストップネジ	2	
23	3044	" " " " " nut	〃 〃 〃 ナット	2	
24	5070	" " " adjusting screw	〃 調節ネジ	1	
25	137561-1	Needle plate support	〃 カバー	1	
26	137562	Lower knife	下メス	1	
27	137563	" " clamp	〃 止ピン	1	
28	5069	" " " nut	〃 〃 ナット	1	

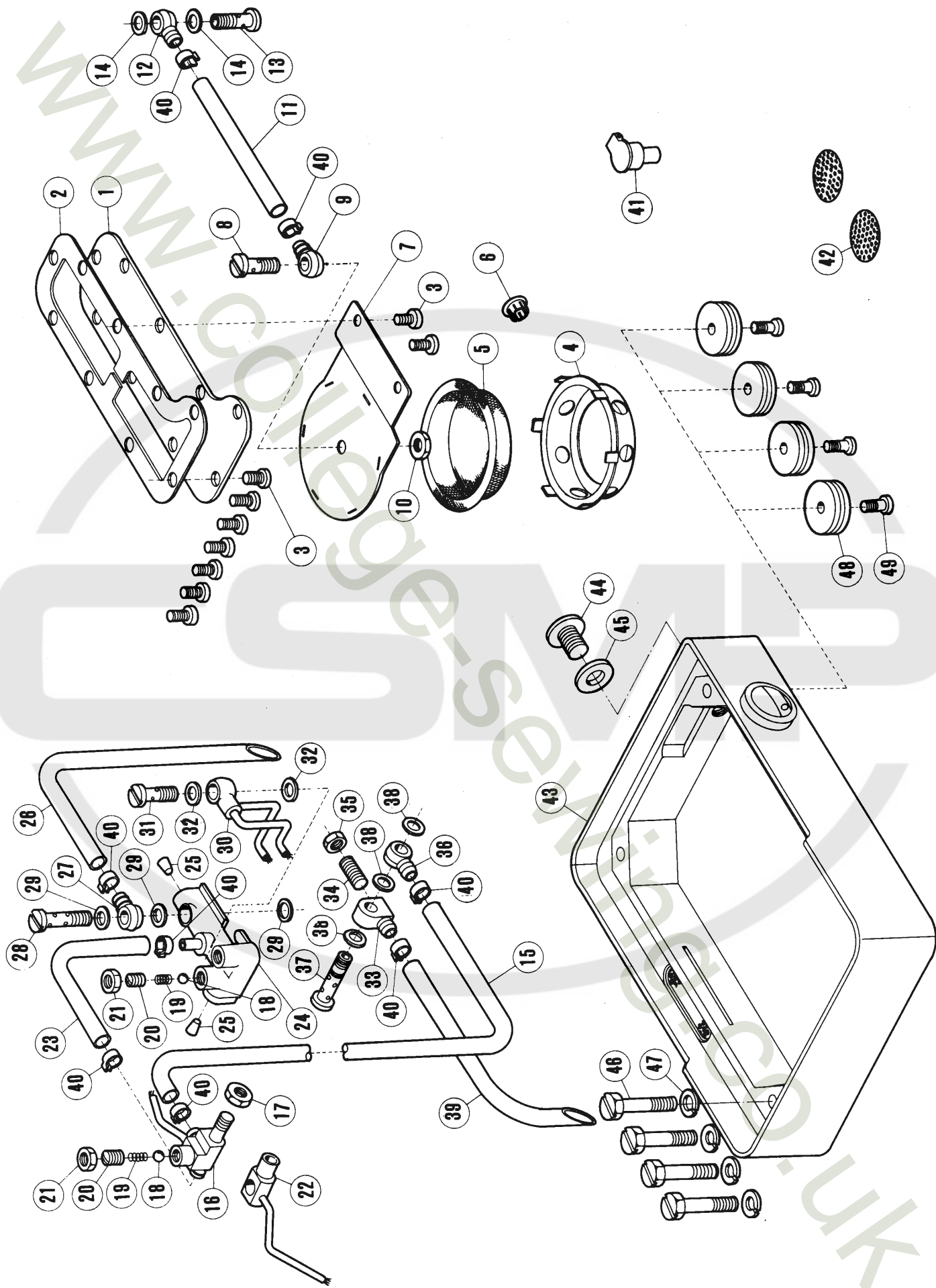




# PRESSER FOOT & LIFTING MECHANISM

## 押 工 機 構

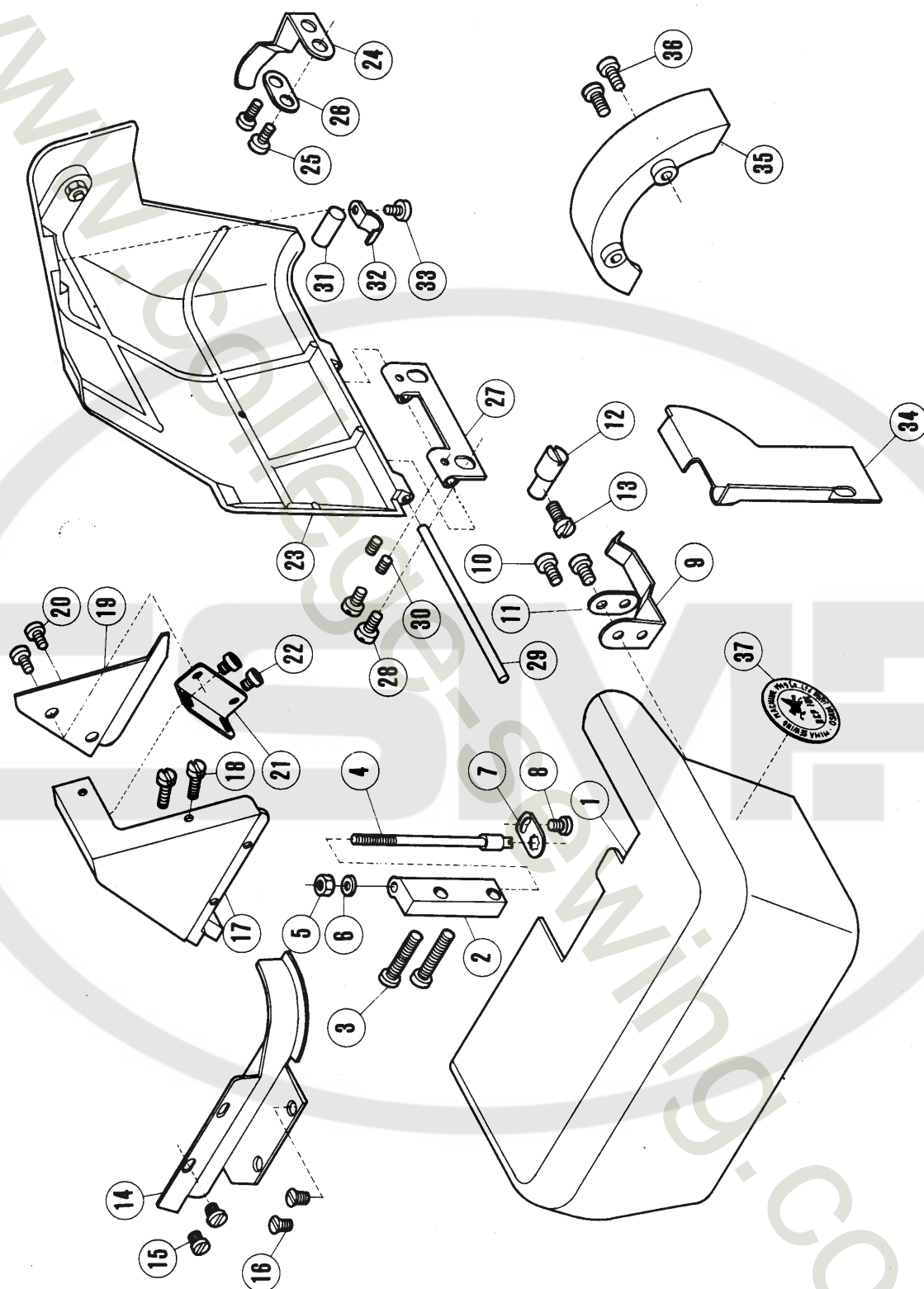
Ref. No. 参照番号	Parts No. 部品番号	Name	名 称	Qt. 数量	Remarks 備 考
1	200109	Presser foot carrier	押エ台	1	
2	200319	" " " pivot stud	ク ビン	1	
3	2213	" " " " " screw	ク ク 止ネジ	1	
4	200110	" " pressure spring	ク バネ	1	
5	2371	" " " adjusting thumb screw	ク ク 調節ネジ	1	
6	200111	" " lift adjusting bracket	ク 揚程調節	1	
7	1175-3	" " " " " screw	ク ク 止ネジ	2	
8	5017	" " " " " screw	ク ク ネジ	1	
9	3044	" " " " " nut	ク ク ク ナット	1	
10	137145A	" " lifting lever bracket	押エ足揚台	1	
11	2213	" " " " " screw	ク ク 止ネジ	2	
12	200117	" " " lever	ク 足揚	1	
13	137147	" " " " " spring	ク ク バネ	1	
14	2285	" " " " " pivot stud	ク ク 取付ネジ	1	
15	5017	" " " " " stop screw	ク ク 調節ネジ	1	
16	3044	" " " " " " nut	ク ク ク ナット	1	
17	200268	" foot (solid), complete with 200266, 137163 & 1231	固定押エ(組)200266, 137163 1231ノ組	1	
	200267	" " body	大押エ	1	
	200116	" " plate	小押エ	1	
	137166	" " " hinge pin	ク ノッグピン	1	
	137164	" " " spring	ク バネ	1	
	137165	" " " " " adjusting pin	ク ク ビン	1	
	1459	" " " " " " screw	ク ク ク 止ネジ	1	
18	137163	" " chaining-off finger	押エ爪	1	
19	1231	" " " " " screw	ク 止ネジ	1	
20	2902	" " screw	押エ止ネジ	1	
21	137142	" " " washer	ク 座金	1	
22	200113	" foot (hinged), complete with 200112, 137163, & 1231	自由押エ(組)200112, 137163 1231ノ組	1	



# LUBRICATING MECHANISM

## 給 油 機 構

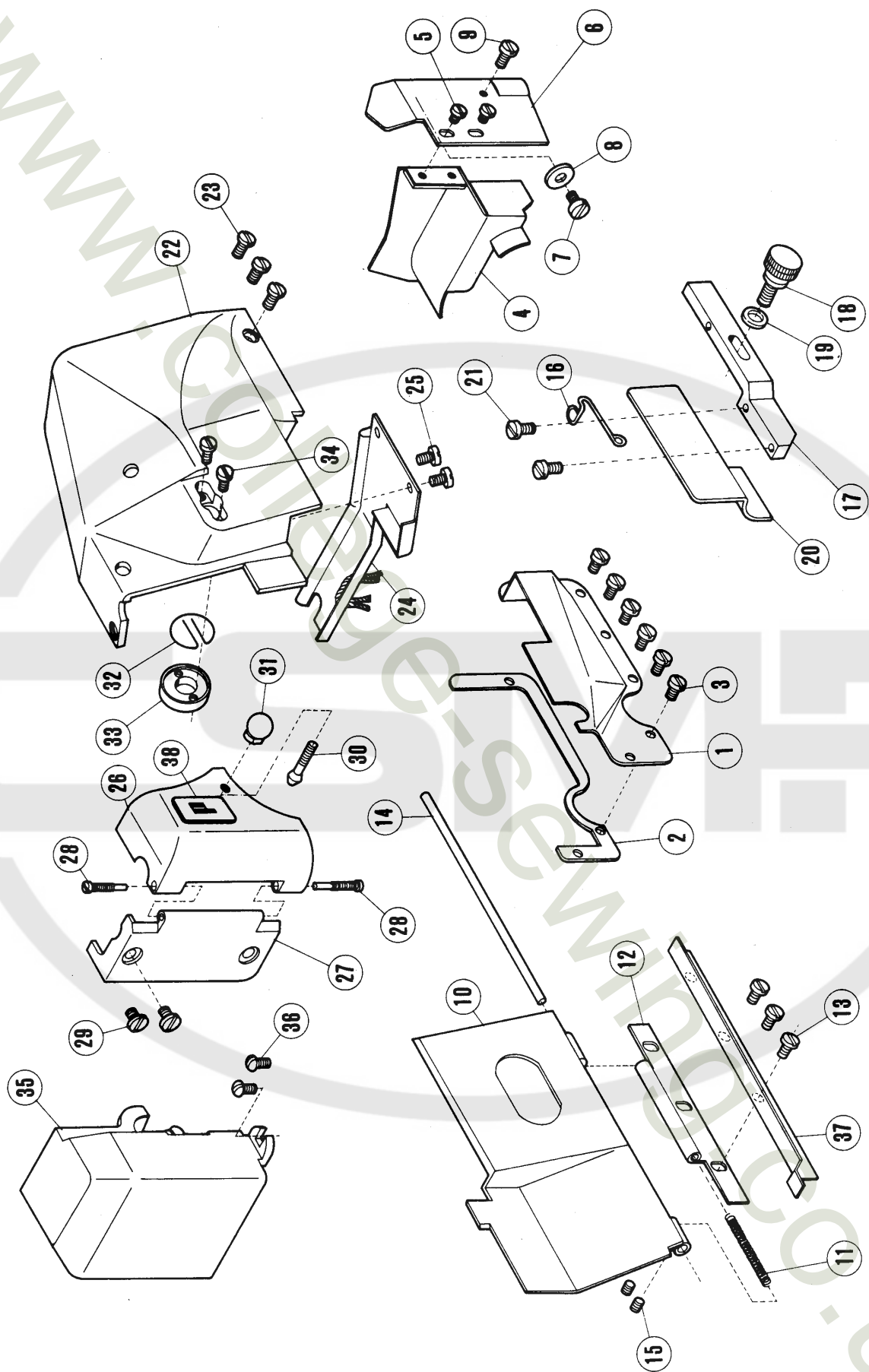
Ref. No. 参照番号	Parts No. 部品番号	Name	名 称	Qt. 数量	Remarks 備 考
1	200505	Machine bottom cover	底板	1	
2	200506	" " " gasket	〃 パッキン	1	
3	2902	" " " screw	〃 止ネジ	9	
	200497	Oil screen filter frame, complete with 200498, 200499 200500, 200131, 200136, 200132 & 5020	油濾枠(組)200498, 200499, 200500, 200131 200136, 5020, 200132ノ組	1	
4	200498	" " " frame	〃	1	
5	200499	" " filter	〃 網	1	
6	200132	" " " eyelet	〃 〃 用ハトメ	1	
7	200500	" " " plate	〃 〃 止金板	1	
8	200131	" distributing tube joint screw	油濾吸油口パイプ継手雄	1	
9	200136	" " " joint	〃 〃 雌	1	
10	5020	" " " " screw nut	〃 〃 締ナット	1	
11	200698	" " tube	吸油口用ビニールパイプ	1	
12	200262	" " " joint	〃 継手雌	1	
13	200137	" " " " screw	〃 〃 雄	1	
14	200138	" " " " " washer	〃 〃 ワッシャー	2	
15	200139A	" " tube	上軸給油調節器給油用ビニールパイプ	1	
16	200520	" " regulator, complete	〃 (組)	1	
17	5020	" " " clamp nut	〃 〃 ナット	1	
18	200144	" " " & oil distributor ball	〃 及ビ油配分器ボール	2	
19	200145	" " " " " " spring	〃 〃 バネ	2	
20	2022-3	" " " " " " " screw	〃 〃 調節ネジ	2	
21	5020	" " " " " " " nut	〃 〃 締ナット	2	
22	200515	Needle bar drive arm pivot shaft oil reservoir	上軸給油用油受(組)	1	
23	200140	Oil distributing tube	油配分器用ビニールパイプ	1	
24	200522	" distributor	油配分器	1	
25	202903	" " cork	〃 油栓	2	
26	200139A	" distributing tube	〃 排油用ビニールパイプ	1	
27	200136	" " " joint	〃 〃 継手上雌	1	
28	200141	" " " " screw	〃 〃 継手雄	1	
29	200138	" " " " " washer	〃 〃 ワッシャー	3	
30	200530	" tube assembly	銅パイプホルダー(組)	1	
31	200152	" " " screw	〃 〃 止ネジ	1	
32	200138	" " " " washer	〃 〃 ワッシャー	2	
33	200524	" draining regulator	排油調節器	1	
34	5051	" " " adjusting screw	〃 調節ネジ	1	
35	3018	" " " " " nut	〃 〃 ナット	1	
36	200136	" distributing tube joint	〃 継手上雌	1	
37	200141	" " " " screw	〃 〃 上雄	1	
38	200138	" " " " " washer	〃 〃 ワッシャー	3	
39	202030A	" " tube	〃 用ビニールパイプ	1	
40	202199	" " " clamp	〃 〃 抱パネ	8	
41	200211	" filler cup	オイルカップ	1	
42	200133	" strainer	油濾金板丸	2	
43	200121	" reservoir (machine base) complete with 200118B,	オイルパン(組)200118B, 200119, 200120ノ組	1	
	200118B	" reservoir 200119 & 200120	〃	1	
	200119	" " oil screen filter	〃 油濾金網	2	
	200120	" " " sight gauge	オイルゲージ	1	
44	5138B	" drain plug screw	オイルパン排油穴蓋ネジ	1	
45	202287A	" " " " washer	〃 〃 座金	1	
46	5153	Arm-bed and oil reservoir screw	〃 取付ボルト	4	
47	202045	" " " " " washer	〃 〃 座金	4	
48	202013	Cushion rubber	クッションゴム	4	
49	5134	" " screw	〃 止ネジ	4	



# CLOTH PLATE & MISCELLANEOUS COVERS

## カバー・外装関係(1)

Ref. No. 参照番号	Parts No. 部品番号	Name	名 称	Qt. 数量	Remarks 備 考
1	200156	Cloth plate, complete with 200157, 200158& 200234	大カバー(組)200157,200158, ,200234 ノ組		
	200157	" " plate	〃 上		
	200158	" " extension	〃 下	1	
	200234	" " stop pin	〃 ストップピン	1	
2	200159A	" " hinge	〃 ヒンヂ	1	
3	5183	" " " screw	〃 〃 止ネジ	2	
4	201221A	" " " pin	〃 〃 ピン	1	
5	5099	" " " " nut	〃 〃 〃 止ナット	1	
6	200821	" " " " " washer	〃 〃 〃 座金	1	
7	202865	" " " " " retainer	〃 〃 〃 廻り止メ	1	
8	5136	" " " " " screw	〃 〃 〃 〃 止ネジ	1	
9	200161	" " lock spring	〃 止バネ	1	
10	1202	" " " " " screw	〃 〃 止ネジ	2	
11	200162 A	" " " " " washer	〃 〃 〃 座金	1	
12	200163A	" " " " " catch	〃 〃 掛金	1	
13	2213	" " " " " screw	〃 〃 〃 止ネジ	1	
14	200233	" " fabric guard	衣除ケ	1	
15	2921	" " " " (upper)	〃 止ネジ(上)	2	
16	5022	" " " " (lower)	〃 〃 (下)	2	
17	200213	Presser foot lifting lever cover	後カバー上	1	
18	1170	" " " " " screw	〃 止ネジ	2	
19	200214	" " " " " oil shield	〃 油除ケ	1	
20	1216	" " " " " " " screw	〃 〃 止ネジ	2	
21	200215	" " " " " " clasp	〃 止金	1	
22	1216	" " " " " " " screw	〃 〃 止ネジ	2	
23	200171	Frame cover (rear), complete with 200170,200167& 3044	後カバー下(組)200170,200167,3044 ノ組	1	
	200170	" " " " " knob	〃 ツマミ	1	
	3044	" " " " " nut	〃 ナット	1	
24	200172	" " " " " lock spring	〃 止バネ	1	
25	1175-2	" " " " " " screw	〃 〃 止ネジ	2	
26	200162 A	" " " " " " " washer	〃 〃 〃 座金	1	
27	200168	" " " " " hinge	〃 ヒンヂ	1	
28	1216	" " " " " " screw	〃 〃 止ネジ	2	
29	200169	" " " " " " pin	〃 〃 ピン	1	
30	5025	" " " " " " screw	〃 〃 〃 止ネジ	2	
31	200173	" " " " " rubber catch	〃 当ゴム	1	
32	200174	" " " " " " clamp	〃 〃 止金	1	
33	5064	" " " " " " " screw	〃 〃 〃 止ネジ	1	
34	200175	Auxiliary cover	後カバー補助板	1	
35	200176A	Pulley cover	プーリーカバー	1	
36	1174	" " " screw	〃 止ネジ	2	
37	200347	Model plate	型式板	1	DCP-101 only用

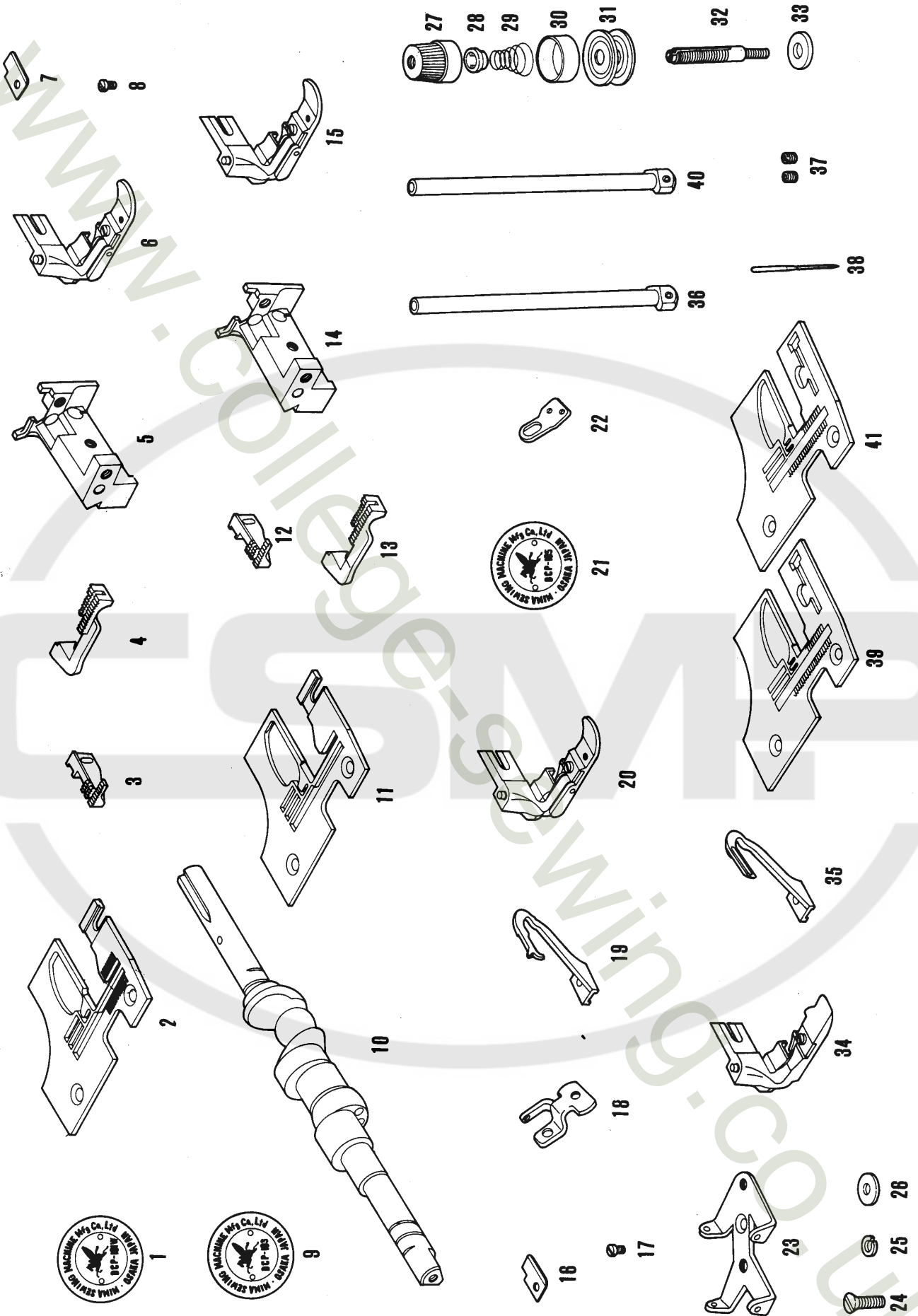




# MACHINE FRAME (FRONT) AND MISCELLANEOUS COVERS

## カバ-・外装関係 (2)

Ref. No. 参照番号	Parts No. 部品番号	Name	名称	Qt. 数量	Remarks 備考
1	200177	Machine frame (front) oil shield	中カバー	1	
2	200212	" " " " " gasket	〃 パッキン	1	
3	1216	" " " " " screw	〃 止ネジ	6	
4	200241	Upper knife drive connection oil shield	〃 油除ケ	1	
5	2921	" " " " " " screw	〃 〃 止ネジ	2	
6	200238	Needle bar drive connection oil shield	大ロッドカバー	1	DCP-101, 101 W, 103, 105, & 106 only用
7	1175-2	" " " " " " screw (large)	〃 止ネジ (大)	1	
8	137142	" " " " " " " washer	〃 〃 〃 座金	1	
9	1174	" " " " " " " (small)	〃 〃 (小)	1	
10	200181A	Front cover, complete with 200186 & 200748x2	蝶番カバー (組) 200186, 200748x2 トノ組 1	1	
	200186	" " knob	〃 ツマミ	1	
	200748	" " hinge (upper)	〃 ヒンデ (上)	2	
11	200750	" " " spring	〃 〃 バネ	1	
12	200184	" " " (lower)	〃 〃 (下)	1	
13	1216	" " " " " screw	〃 〃 〃 止ネジ	3	
14	200749	" " " pin	〃 〃 ピン	1	
15	5025	" " " " " screw	〃 〃 〃 止ネジ	2	
16	200187A	" " lock spring	〃 バネ	1	
17	200189	" " extension holder	角台	1	
18	1281	" " " " " screw	〃 止ネジ	1	
19	137142	" " " " " " washer	〃 〃 座金	1	
20	200190A	" " extension	切屑除ケ	1	
21	1202	" " " " " screw	〃 止ネジ	2	
22	200306	Frame covser(front)	前カバー (上)	1	
23	5091	" " " " " screw	〃 〃 止ネジ	3	
24	200237	Needle bar drive connection link oil shield	針棒リンク油受	1	
25	1216	" " " " " " " " screw	〃 止ネジ	2	
26	200307	" " cover	針棒系道カバー	1	
27	200194	" " " hinge	〃 ヒンデ	1	
28	200195	" " " " " screw stud	〃 〃 ネジピン	2	
29	2905	" " " " " screw	〃 〃 止ネジ	2	
30	200196	" " " catch	〃 掛金	1	
31	200197	" " " " " nut	〃 〃 ナット	1	
32	200198	" " " lock spring	〃 止バネ	1	
33	200199	" " " " " guide	〃 〃 押金	1	
34	1196	" " " " " " " screw	〃 〃 〃 止ネジ	2	
35	200200	Right looper drive connection cover	小ロッドカバー	1	
36	1326	" " " " " " " screw	〃 止ネジ	2	
37	200260	Arm-bed & machine base interstice cover	オイルパン隙間カバー	1	
38	201428	Name plate	銘板	1	



## PARTS FOR MODEL DCP-101W ONLY

## DCP-101W 専用部品

Ref. No. 参照番号	Parts No. 部品番号	Name	名称	Qt. 数量	Remarks 備考
1	◎ 200352	Model plate	型式板	1	
2	◎ 200245A	Needle plate	針板	1	Also for DCP-103共用
3	◎ 200259A	Feed dog	送り歯	1	Also for DCP-103 & 109W共用
4	◎ 200323A	Differential feed dog	差動送り歯	1	〃 〃 〃 〃
5	◎ 138561	Lower knife carrier	下メス台	1	〃 〃 〃 〃
6	◎ 200286	Presser foot (hinged), complete with 200290, 137163 & 1231	自由押エ(組)200290, 137163, 1231ノ組	1	Also for DCP-103共用
	200290	" " body	大押エ(組)	1	
	137163	" " chaining-off finger (for 3-thread machine)	押エ爪(3本糸用)	1	
	1231	" " " " screw	〃 止ネジ	1	
7	○ 200271	" " fabric guard	押エ羽根	1	Also for DCP-103 & 109W共用
8	○ 5030	" " " " screw	〃 止ネジ	1	〃 〃 〃 〃

## PARTS FOR MODEL DCP-103 ONLY

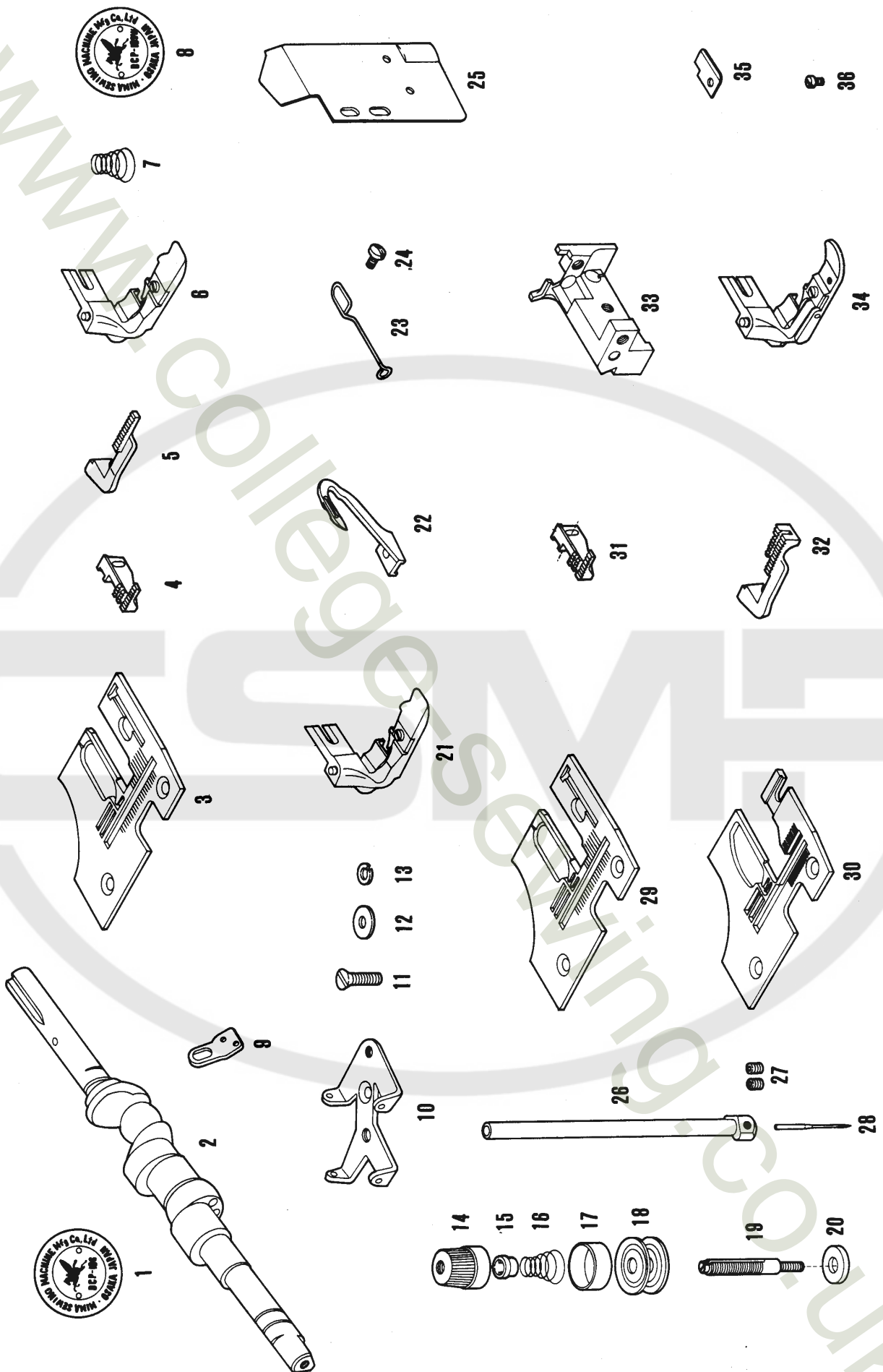
## DCP-103 専用部品

9	◎ 200348	Model plate	型式板	1	
10	◎ 200338A	Crankshaft, complete	クランクシャフト(組)	1	
11	◎ 200245A	Needle plate	針板	1	Also for DCP-101W共用
12	◎ 200259A	Feed dog	送り歯	1	Also for DCP-101W & 109W共用
13	◎ 200323A	Differential feed dog	差動送り歯	1	〃 〃 〃 〃
14	◎ 138561	Lower knife carrier	下メス台	1	〃 〃 〃 〃
15	◎ 200286	Presser foot (hinged), complete with 200290, 137163 & 1231	自由押エ(組)200290, 137163, 1231ノ組	1	Also for DCP-101W共用
	200290	" " body	大押エ(組)	1	
	137163	" " chaining-off finger (for 3-thread machine)	押エ爪(3本糸用)	1	
	1231	" " " " screw	〃 止ネジ	1	
16	○ 200271	" " fabric guard	押エ羽根	1	Also for DCP-101W & 109 W共用
17	○ 5030	" " " " screw	〃 止ネジ	1	
18	◎ 200250	Secondary needle thread tension plate	小調子台	1	For 2-thred machine only用
19	◎ 139301	Spreader	大ルーバー	1	〃 〃 〃 〃
20	◎ 200285	Presser foot (hinged), complete with 200290, 138163 & 1231	自由押エ(組)200290, 138163, 1231ノ組	1	〃 〃 〃 〃
	200290	" " body	大押エ(組)	1	
	138163	" " chaining-off finger (for 2-thread machine)	押エ爪(2本糸用)	1	
	1231	" " " " screw	〃 止ネジ	1	

## PARTS FOR MODEL DCP-105 ONLY

## DCP-105 専用部品

21	◎ 200349	Model plate	型式板	1	
22	◎ 200255	Needle thread guide	上糸道	1	Also for DCP-109 & 109W共用
23	◎ 200253	Primary needle thread tension plate	針糸調子台	1	〃 〃 〃 〃
24	○ 1732	" " " " " " screw	〃 止ネジ	1	
25	○ 200055	" " " " " " washer	〃 〃 座金	1	
26	○ 202286	" " " " " " spring washer	〃 〃 パネ座金	1	Also for DCP-109 & 109W共用
	200051	" " " " " " tension, complete with 201035A, 202278, 201037, 201039, 101111x2 & 5143	針糸調子(組)201035A, 202278, 201037, 201039, 101111x2, 5143Aノ組	2	Also for DCP-109 & 109W共用
27	○ 201035A	" " " " " " nut	〃 ナット	2	〃 〃 〃 〃
28	○ 202278	" " " " " " spring bushing	〃 〃 止パイプ	2	〃 〃 〃 〃
29	○ 201037	" " " " " " spring (heavy)	〃 パネ(強)	2	〃 〃 〃 〃
30	○ 201039	" " " " " " cap	〃 〃 受皿	2	〃 〃 〃 〃
31	○ 101111	" " " " " " disc	〃 皿	4	〃 〃 〃 〃
32	○ 5143A	" " " " " " post	〃 棒	2	〃 〃 〃 〃
33	○ 137142	" " " " " " washer	〃 〃 座金	2	〃 〃 〃 〃
34	◎ 200287	Presser foot (solid), complete with 200266, 141163 & 1231	固定押エ(組)200266, 141163, 1231ノ組	1	
	200266	" " body	大押エ(組)	1	
	141163	" " chaining-off finger (for 2-needle machine)	押エ爪(2本針用)	1	
	1231	" " " " screw	〃 止ネジ	1	
35	◎ 200340	Right looper	大ルーバー	1	
36	◎ 200277	Needle bar (2.0 mm needle gauge), complete with 200367 & 200369	針棒(組)針巾2.0mm用 200367, 200369ノ組	1	Also for DCP-109 & 109W共用
37	○ 5292	" clamp screw	針止ネジ	2	
38	○ D C x1	Needle, size No.11	針#11	2	
39	◎ 200252A	" plate (2.0mm needle gauge)	針板・(針巾2.0mm用)	1	Also for DCP-109共用
40	◎ 141122	" bar (1.7mm needle gauge), complete with 200367 & 200368	針棒(組)針巾1.7mm用 200367, 200368ノ組	1	
41	◎ 200251A	" plate (1.7mm needle gauge)	針板(針巾1.7mm用)	1	



# PARTS FOR MODEL DCP-106 ONLY

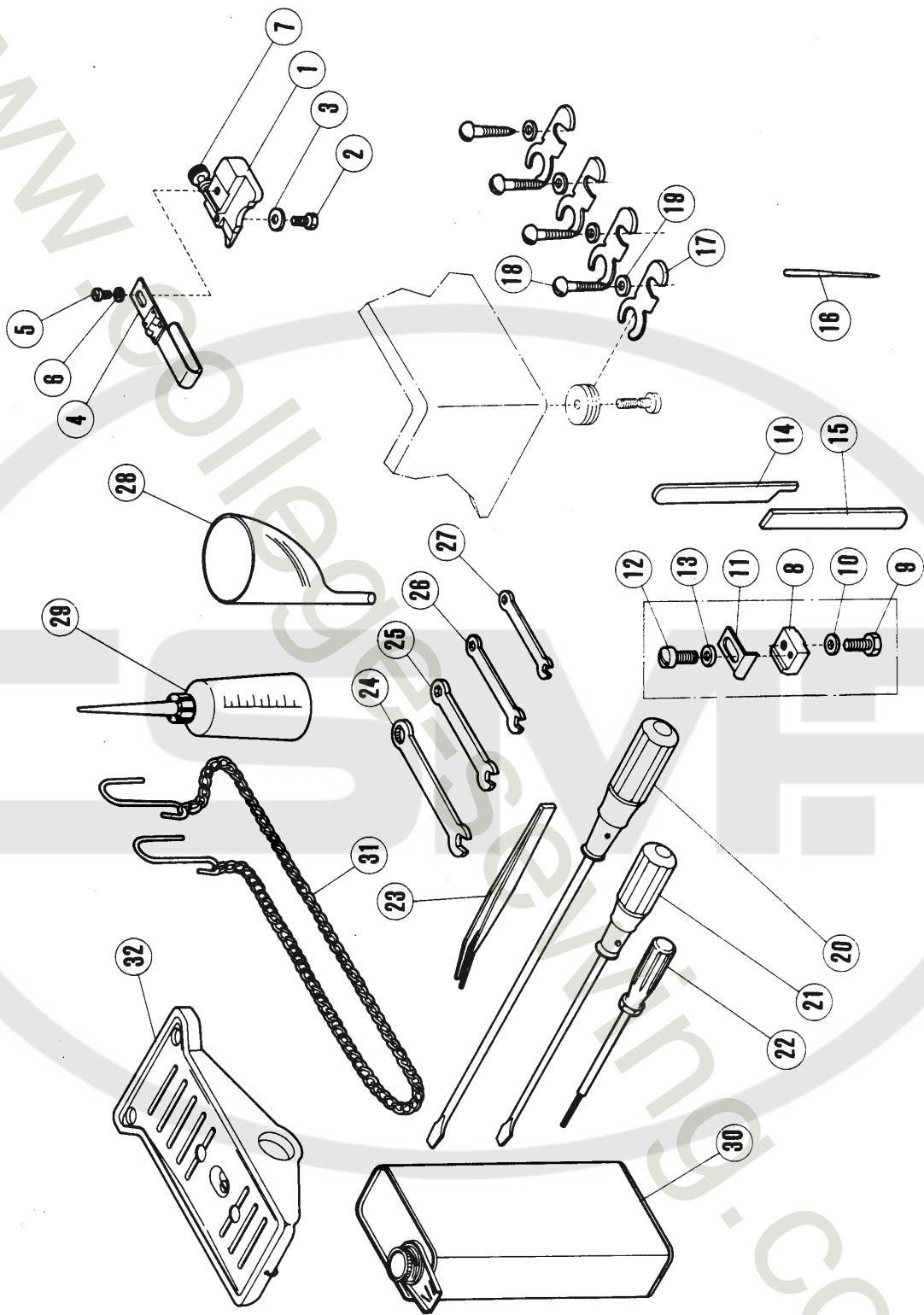
## DCP-106 専用部品

Ref. No. 参照番号	Parts No. 部品番号	Name	名称	Qt. 数量	Remarks 備考
1	◎ 200350	Model plate	型式板	1	
2	◎ 200339A	Crankshaft, complete	クランクシャフト(組)	1	
3	◎ 200269A	Needle plate	針板	1	
4	◎ 200259A	Feed dog	送り歯	1	
5	◎ 200325A	Differential feed dog	差動送り歯	1	
6	◎ 200288	Presser foot (solid), complete with 200266, 142163 & 1231	固定押エ(組)200266, 142163, 1231ノ組	1	
	200266	" " body	大押エ(組)	1	
	142163	" " chaining-off finger	押エ爪	1	
	1231	" " " " screw	止ネジ	1	
7	◎ 201086	Primary needle thread tension spring (medium)	針糸調子バネ(中)	1	

# PARTS FOR MODEL DCP-109 & 109W ONLY

## DCP-109, 109W 専用部品

8	◎ 200351	Model plate	型式板	1	
9	◎ 200255	Needle thread guide	上糸道	1	Also for DCP-105共用
10	◎ 200253	Primary needle thread tension plate	針糸調子台	1	" " "
11	○ 1732	" " " " " screw	止ネジ	1	
12	○ 200055	" " " " " washer	座金	1	
13	○ 202286	" " " " " spring washer	バネ座金	1	
	200051	" " " tension, complete	針糸調子(組)	2	" " "
14	○ 201035A	" " " " nut	ナット	2	" " "
15	○ 202278	" " " " spring bushing	止パイプ	2	" " "
16	○ 201037	" " " " spring (heavy)	バネ(強)	2	" " "
17	○ 201039	" " " " " cap	受皿	2	" " "
18	○ 101111	" " " " disc	皿	4	" " "
19	○ 5143A	" " " " post	棒	2	" " "
20	○ 137142	" " " " " washer	座金	2	" " "
21	◎ 200287	Presser foot (solid), complete with 200266, 141163 & 1231	固定押エ(組)200266, 141163, 1231トノ組	1	" " "
	200266	" " body	大押エ(組)	1	" " "
	141163	" " chaining-off finer (for 2-needle machine)	押エ爪(2本針用)	1	" " "
	1231	" " " " screw	止ネジ	1	
22	◎ 200278	Right looper	大ルーバー	1	
23	○ 200273	Auxiliary right looper thread guide	補助糸道	1	
24	○ 2921	" " " " " screw	止ネジ	1	
25	◎ 200337	Needle bar drive connection oil shield	大ロッドカバー	1	
26	◎ 200277	" bar, complete with 200367 & 200369	針棒(組)200367, 200369トノ組	1	Also for DCP-105 共用
27	○ 5292	" clamp screw	針止ネジ	2	" " "
28	○ D C x1	Needle, size No.11	針#11	2	
29	◎ 200252A	" plate	針板	1	Also for DCP-105 共用
30	◎ 200336A	" plate	"	1	DCP-109W only用
31	◎ 200259A	Feed dog	送り歯	1	DCP-101W, 103 & 109W only用
32	◎ 200323A	Differential feed dog	差動送り歯	1	" " "
33	◎ 138561	Lower knife carrier	下メス台	1	" " "
34	◎ 200289	Presser foot (hinged), complete with 200290, 141163 & 1231	自由押エ(組)200290, 141163, 1231ノ組	1	DCP-109W only用
	200290	" " body	大押エ(組)	1	
	141163	" " chaining-off finger (for 2-needle machine)	押エ爪(2本針用)	1	
	1231	" " " " screw	止ネジ	1	
35	○ 200271	" " fabric guard	押エ羽根	1	DCP-101W, 103 & 109W only用
36	○ 5030	" " " " screw	止ネジ	1	





## ACCESSORIES

## 附 属 品

Ref. No. 参照番号	Parts No. 部品番号	Name	名 称	Qt. 数量	Remarks 備 考
	200470	Welt guide, complete with	定規台 (組) 137905, 2193, 137142, 137908, 1202, 137906, 2430 トノ組	1	DCP-101 only用
1	137905	" " holder	定規台	1	
2	2193	" " " screw	◇ 止ネジ	1	
3	137142	" " " " washer	◇ ◇ 座金	1	
4	137908	" guide	定規羽根	1	
5	1202	" " screw	◇ 止ネジ	1	
6	137906	" " " washer	◇ ◇ 座金	1	
7	2430	" " holder regulating screw	定規台調節ネジ	1	
	200471	Cloth guide, complete with	定規台 (組) 138905, 2193, 137142, 200272, 1202 & 137906 トノ組	1	DCP-101 W, 103 & 109 only用
8	138905	" " holder	定規台	1	
9	2193	" " " screw	◇ 止ネジ	1	
10	137142	" " " " washer	◇ ◇ 座金	1	
11	200272	" guide	定規	1	
12	1202	" " screw	◇ 止ネジ	1	
13	137906	" " " washer	◇ ◇ 座金	1	
14	138559	Upper knife	上メス	1	
15	137562	Lower knife	下メス	1	
16	D C x1	Needle, size No.9 (for domestics only)	針 #9	10	DCP-101 & 106 only用
	D C x1	" " No.11 (for exports only)	◇ #11	10	DCP-101 W, 103, 105, 109 & 109W only用
17	202014A	Machine base set hook	オイルパン足金	4	
18	5019	" " " " wood screw	◇ 据付用木ネジ	4	
19	137142	" " " " " washer	◇ ◇ 座金	4	
20	127	Screw driver (large)	ネジ廻シ (大)	1	
21	128	" " (medium)	◇ (中)	1	
22	179	Hexagan face screw driver (for needle clamp screws)	ソケットスクリュー用ドライバー (二本針針止メネジ用)	1	DCP-105, 109 & 109W only用
23	131	Tweezers	ピンセット	1	
24	286	Wrench (9.5mm)	スパナ (9.5mm)	1	
25	284	" (7.0mm)	◇ (7 mm)	1	
26	283	" (6.0mm)	◇ (6 mm)	1	
27	282	" (5.0mm)	◇ (5 mm)	1	
28	135 A	Funnel	ジョウゴ	1	
29	132	Oil	油差シ	1	
30	133	Oil container (500cc)	油缶 (500cc)	1	
31	126	Treadle chain	鎖	1	
32	121	Treadle	靴 (国内用)	1	
	122	" (for exports)	" (貿易用)	1	

# NUMERICAL INDEX OF PARTS

## 部 品 番 号 索 引

PartsNo. Page Ref. No.	PartsNo. Page Ref. No.	PartsNo. Page Ref. No.	PartsNo. Page Ref. No.	PartsNo. Page Ref. No.
部品番号 頁 参照番号	部品番号 頁 参照番号	部品番号 頁 参照番号	部品番号 頁 参照番号	部品番号 頁 参照番号
121 25 32	1234 5 8	3119 5 29	101113 7 29	138561 21 5
122 25 25	1281 19 18	5001 9 5	101113 7 61	138561 21 14
126 25 31	1326 7 58	5002 7 36	137016 7 66	138561 23 33
127 25 20	1326 19 36	5002 7 54	137103 7 67	138905 25 8
128 25 21	1419 9 39	5002 9 2	137106 7 34	139301 21 19
131 25 23	1435 11 22	5003 9 3	137114 7 30	141122 21 40
132 25 29	1457 5 11	5010 3 21	137115 7 62	141163 21
133 25 30	1457 7 13	5010 5 4	137121 7 5	141163 23
135A 25 28	1457 7 15	5010 7 4	137122 5 25	141163 23
179 25 22	1457 7 50	5012 7 39	137123 5 26	142163 23
282 25 27	1457-1 7 68	5017 13 8	137130 5 3	167005 11 3
283 25 26	1458 7 42	5017 13 15	137130 7 3	193174 7 57
284 25 25	1459 13	5019 25 18	137142 5 43	200003A 3
286 25 24	1732 5 32	5020 15 10	137142 7 20	200015 3 16
1132 11 16	1732 21 24	5020 15 17	137142 7 33	200016 3 17
1156 7 41	1732 23 11	5020 15 21	137142 7 45	200017 3 18
1156 9 11	1817-2A 5 42	5022 17 16	137142 7 65	200018A 3 15
1170 17 18	1817-2A 7 32	5025 17 30	137142 9 6	200020 3 14
1170-1 5 34	1817-2A 7 64	5025 19 15	137142 13 21	200021 3 19
1170-3 5 19	1892 7 47	5026 3 4	137142 19 8	200024 3 26
1170-3 9 9	1936A 3	5027 11 11	137142 19 19	200030 3 25
1170-3 9 37	2022 5 13	5029 7 37	137142 21 33	200033 5 1
1174 9 33	2022 7 8	5030 21 8	137142 23 20	200034 5
1174 11 2	2022 7 52	5030 21 17	137142 25 3	200037 5 9
1174 17 36	2022 9 16	5030 23 36	137142 25 10	200038 5 10
1174 19 9	2022-3 3 5	5051 3 24	137142 25 19	200040 5 20
1175-2 5 48	2022-3 3 9	5051 15 34	137145A 13 10	200041 5 22
1175-2 9 20	2022-3 7 6	5052 3 23	137147 13 13	200044A 5 31
1175-2 9 23	2022-3 9 13	5053 7 56	137163 13 18	200045 5 47
1175-2 17 25	2022-3 15 20	5064 7 11	137163 21	200050 5
1175-2 19 7	2022-4 5 6	5064 17 33	137163 21	200051 21
1175-3 3 13	2133-1 5 36	5065 11 21	137164 13	200051 23
1175-3 13 7	2133-1 11 7	5069 11 28	137165 13	200053 7 7
1186 5 21	2193 7 19	5070 11 24	137166 13	200054 7 9
1186 5 28	2193 25 2	5091 19 23	137301 7 21	200055 7 10
1196 7 22	2193 25 9	5099 17 5	137302 7 55	200055 21 25
1196 19 34	2213 13 3	5134 15 49	137409 9 15	200055 23 12
1202 7 24	2213 13 11	5136 9 35	137419 9 4	200057 7 12
1202 7 27	2213 17 13	5136 17 8	137552 11 6	200057 7 49
1202 17 10	2213-1 5 2	5137 7 44	137553 11 8	200058 7 14
1202 19 21	2213-1 7 2	5138B 15 44	137554 11 10	200059 7 16
1202 25 5	2213-1 7 17	5143A 21 32	137558 11 18	200062 7 18
1202 25 12	2285 13 14	5143A 23 19	137560 11 17	200063 7 23
1216 17 20	2308 9 27	5153 15 46	137561 11 20	200064 7
1216 17 22	2371 13 5	5183 17 3	137561-1 11 25	200065 7 28
1216 17 28	2430 25 7	5224 11 14	137562 11 26	200070 7 38
1216 19 3	2902 13 20	5259 11 9	137562 25 15	200073 7 48
1216 19 13	2902 15 3	5292 21 37	137563 11 27	200074 7 51
1216 19 25	2905 19 29	5292 23 27	137564 5 33	200077 7 59
1222 5 17	2921 17 15	9070-2 5 23	137905 25 1	200078 7
1231 13 19	2921 19 5	D C X1 5 30	137906 25 6	200081 9 32
1231 21	2921 23 24	D C X1 21 38	137906 25 13	200082 9 34
1231 21	3001 9 30	D C X1 23 28	137908 25 4	200083 9 36
1231 21	3018 11 4	D C X1 25	137950 3	200084 9 38
1231 21	3018 15 35	D C X1 25 16	138163 21	200085 9
1231 21	3044 5 44	101111 5 41	138555-1 11 13	200089 9 12
1231 21	3044 11 23	101111 7 31	138555A 11 12	200097 9 26
1231 23	3044 13 9	101111 7 63	138556 11 15	200098 9 28
1231 23	3044 13 16	101111 21 31	138559 11 19	200099 9 29
1231 23	3044 17	101111 23 18	138559 25 14	200102 11 1
1231 23	3056 7 60			

PartsNo. Page Ref. No.	PartsNo. Page Ref. No.	PartsNo. Page Ref. No.	PartsNo. Page Ref. No.	PartsNo. Page Ref. No.
部品番号 頁 参照番号	部品番号 頁 参照番号	部品番号 頁 参照番号	部品番号 頁 参照番号	部品番号 頁 参照番号
200103 11	200198 19 32	200288 23 6	200530 15 30	
200105A 11 5	200199 19 33	200289 23 34	200534 5 7	
200106 11	200200 19 35	200290 21	200605 3	
200109 13 1	200202B 3 22	200290 21	200607 3 6	
200110 13 4	200203 5 35	200290 21	200617 7	
200111 13 6	200204 5 45	200290 23	200618 7 1	
200113 13 22	200205 5 24	200291 3 12	200652 5 12	
200116 13	200211 15 41	200292 3 20	200653 5 14	
200117 13 12	200212 19 2	200293 A 7 43	200654 5 15	
200118B 15	200213 17 17	200294 7 46	200655 5 18	
200119 15	200214 17 19	200306 19 22	200696 5 27	
200120 15	200215 17 21	200307 19 26	200698 15 11	
200121 15 43	200219 3 10	200308 9 7	200748 19	
200131 15 8	200220 3 11	200309 9 8	200749 19 14	
200132 15 6	200221 3 8	200310 A 9	200750 19 11	
200133 15 42	200222 3 3	200311 9 17	200821 17 6	
200136 15 9	200225 7 53	200312 9 21	201035A 5 37	
200136 15 27	200226 7 26	200314 9 24	201035A 21 27	
200136 15 36	200229A 9 19	200315 A 9 18	201035A 23 14	
200137 15 13	200233 17 14	200316 9 25	201037 5 39	
200138 15 14	200234 17	200317 A 3 2	201037 21 29	
200138 15 29	200237 19 24	200318 A 9 22	201037 23 16	
200138 15 32	200238 19 6	200319 13 2	201039 5 40	
200138 15 38	200241 19 4	200322 9 10	201039 21 30	
200139A 15 15	200245A 21 2	200323 A 21 4	201039 23 17	
200139A 15 26	200245A 21 11	200323 A 21 13	201086 23 7	
200140 15 23	200250 21 18	200323 A 23 32	201221A 17 4	
200141 15 28	200251A 21 41	200325 A 23 5	201252 7 25	
200141 15 37	200252A 21 39	200336 A 23 30	201428 19 38	
200144 15 18	200252A 23 29	200337 23 25	202013 15 48	
200145 15 19	200253 21 23	200338 A 21 10	202014A 25 17	
200152 15 31	200253 23 10	200339 A 23 2	202030A 15 39	
200156 17 1	200255 21 22	200340 21 35	202045 15 47	
200157 17	200255 23 9	200347 17 37	202177 5 16	
200158 17	200259A 21 3	200348 21 9	202199 15 40	
200159A 17 2	200259A 21 12	200349 21 21	202278 5 38	
200161 17 9	200259A 23 4	200350 23 1	202278 21 28	
200162A 17 11	200259A 23 31	200351 23 8	202278 23 15	
200162A 17 26	200260 19 37	200352 21 1	202286 5 46	
200163A 17 12	200262 15 12	200373 7 40	202286 21 26	
200168 17 27	200265 5 5	200389 3 7	202286 23 13	
200169 17 29	200266 21	200470 25	202287A 15 45	
200170 17	200266 23	200471 25	202865 17 7	
200171 17 23	200266 23	200497 15	202903 9 14	
200172 17 24	200267 13	200498 15 4	202903 15 25	
200173 17 31	200268 13 17	200499 15 5		
200174 17 32	200269A 23 3	200500 15 7		
200175 17 34	200271 21 7	200501 7 35		
200176A 17 35	200271 21 16	200502 9 31		
200177 19 1	200271 23 35	200503 9 1		
200181A 19 10	200272 25 11	200505 15 1		
200184 19 12	200273 23 23	200506 15 2		
200186 19	200277 21 36	200510 3 1		
200187A 19 16	200277 23 26	200511 3		
200189 19 17	200278 23 22	200513 7		
200190A 19 20	200285 21 20	200514 9		
200194 19 27	200286 21 6	200515 15 22		
200195 19 28	200286 21 15	200520 15 16		
200196 19 30	200287 21 34	200522 15 24		
200197 19 31	200287 23 21	200524 15 33		

[www.collegesewing.co.uk](http://www.collegesewing.co.uk)



[www.collegesewing.co.uk](http://www.collegesewing.co.uk)



**PEGASUS  
SEWING MACHINE MFG.  
CO., LTD.®**

