



# PEGASUS

INDUSTRIAL

SEWING MACHINE

## PARTS LIST

### MODEL

**DC-MS230**

**DC-MS205**

**DC-MS220**

**DC-MS250**

**DC-MS205D**

**DC-MS220D**

**DC-MS230D**

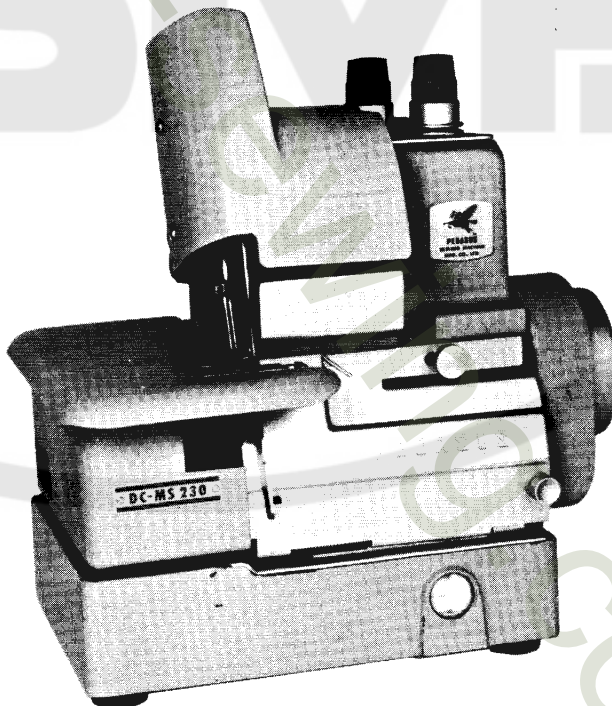
**DC-MS250D**

**HIGH SPEED**

**2 NEEDLES**

**5 THREADS**

**SAFETY-STITCH  
MACHINES**



**MODEL DC-MS230**

**MIMA SEWING MACHINE CO., LTD.**  
**PEGASUS SEWING MACHINE MFG. CO., LTD.**

**OSAKA — JAPAN — TOKYO**

[www.collegesewing.co.uk](http://www.collegesewing.co.uk)



## IN ORDERING PARTS

This list has been arranged to simplify ordering repair parts for DC-MS series machines on the basis of model DC-MS230.

Various sections of the mechanisms are shown on each page. On the page opposite the illustration will be found a listing of the parts with their reference numbers, parts numbers, name and the number of pieces required.

A parts whose number is marked with an asterisk, e.g. \*202075A, Page 3, is not recommended for the individual replacement, so complete assembly or sub-assembly should be ordered.

Organization parts for all models, whose numbers are marked with two asterisks, e.g. \*\*200711, Ref. No.31, Page 5, are again illustrated and listed on the pages 26-29 so that the parts numbers of relating other organization parts for repair or conversion may be obtained.

If the parts are used exclusively for certain models only, such machine models are specified in the column "Name" listed on Page 3 to 23. And the exclusive parts for model DC-MS205D, 220D, 230D and 250D only are shown on Pages 24 to 25.

At the back of this list will be found a numerical index of all the parts shown in this list. This will facilitate locating the illustration and descriptions when only the parts number is known.

In ordering parts from this list, USE ONLY the PARTS NUMBER in the second column. Reference number should never be used in ordering parts.

This Parts List applies to the machines manufactured in August, 1971.

## 部品表御利用に際して

本パーツ・リストは、DC-MS230型ミシンを基に、DC-MSシリーズ・ミシンの修理用部品を容易にご利用戴けるよう編集されています。

機構別に各頁に収録され、部品図解頁の反対頁には参照番号、部品番号、名称、使用数量の順で記載されています。

部品番号の左に\*印の付された部品は、複数の部品が組合された部品の一部品で個々に販売はしていません。ご購入の際はこれらの部品が組合された部品をご注文下さい。(例：3頁、\*202075A、クランクシャフト・\*200605、クランクシャフト油受リングが組合されて、参照番号7、202074、クランクシャフト(組)・となっています。)

\*\*印の付された部品はゲージ・パーツです。ゲージ・パーツは26頁～27頁に図解を、28頁～29頁に機種別、用途別(使用糸別)に該当ゲージ・パーツの一覧表を記載していますので、この一覧表を参照して下さい。(例：5頁、参照番号31、部品番号\*\*200711針棒)

本パーツ・リストの3頁～23頁にわたって、名称欄に使用機種名を指定しています部品は、指定された機種のみを使用される部品であります。したがって使用機種名を指定していない部品は、全機種に共用できます。DC-MS205D, 220D, 230D, 250D形ミシンの専用部品は24頁～25頁に記載していますので参照して下さい。

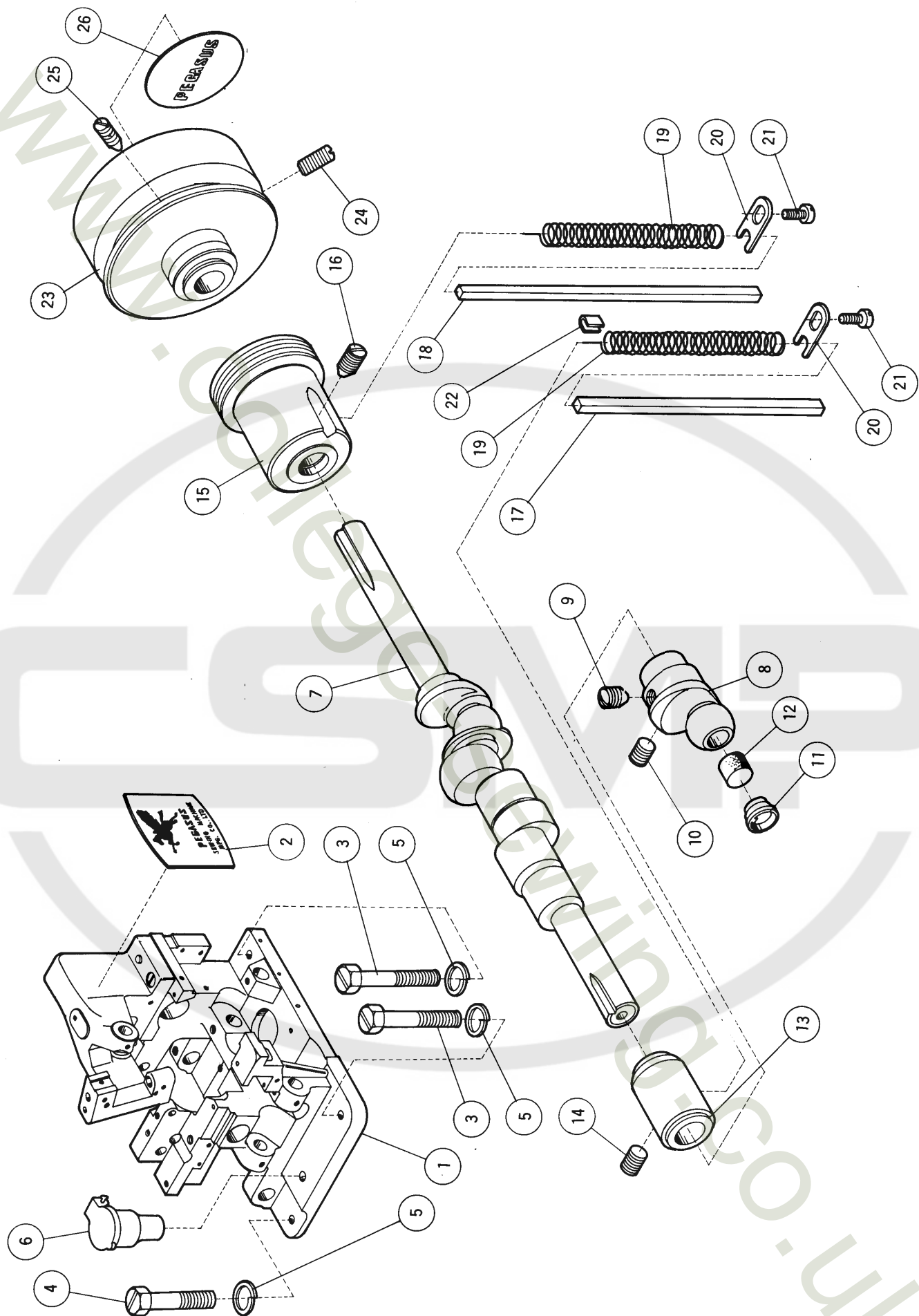
本パーツ・リストの32頁～33頁には部品番号索引表を付し、部品番号のみでその図解、名称などが容易に引き出せます。

本パーツ・リストに基き部品ご注文の際、参照番号は絶対に使用されず、部品番号のみを明示して下さい。

本パーツ・リストは1971年8月現在製造中のミシンをもとに作成されています。

## CONTENTS

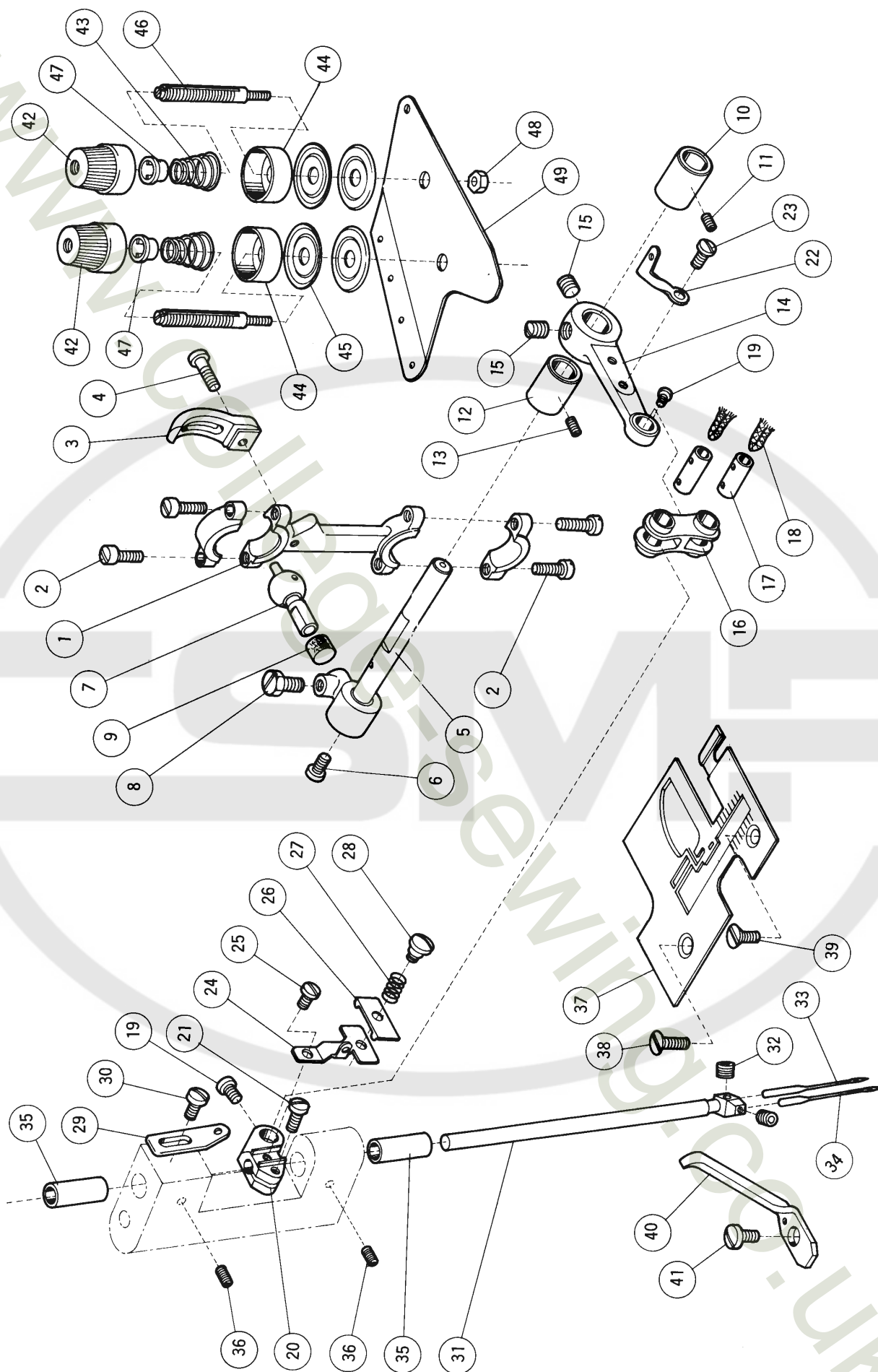
	目次	PAGE 頁
ARM-BED & CRANKSHAFT MECHANISM .....	アーム・ベッド、主軸機構.....	2 ~ 3
NEEDLE DRIVE MECHANISM .....	針棒機構.....	4 ~ 5
RIGHT & LEFT LOOPER DRIVE MECHANISM .....	大・小ルーパー機構.....	6 ~ 7
(1) DOUBLE CHAINSTITCH LOOPER DRIVE MECHANISM .....	二重環ルーパー機構(1).....	8 ~ 9
(2) DOUBLE CHAINSTITCH LOOPER DRIVE MECHANISM .....	二重環ルーパー機構(2).....	10 ~ 11
FEED MECHANISM .....	送り機構.....	12 ~ 13
PRESSER FOOT & LIFT MECHANISM .....	押工機構.....	14 ~ 15
UPPER & LOWER KNIFE MECHANISM .....	上・下メス機構.....	14 ~ 15
(1) PUMP LUBRICATING MECHANISM .....	給油機構(1).....	16 ~ 17
(2) PUMP LUBRICATING MECHANISM .....	給油機構(2).....	18 ~ 19
(1) MACHINE FRAME AND MISCELLANEOUS COVERS .....	カバー・外装機構(1).....	20 ~ 21
(2) MACHINE FRAME AND MISCELLANEOUS COVERS .....	カバー・外装機構(2).....	22 ~ 23
PARTS FOR MODEL DC-MS205D, 220D, 230D & 250D ONLY .....	DC-MS205D, 220D, 230D, 250D 専用部品 .....	24 ~ 25
LIST OF ORGANIZATION PARTS .....	ゲージ・パーツ表.....	26 ~ 29
ACCESSORIES .....	付属品.....	30 ~ 31
NUMERICAL INDEX OF PARTS .....	部品番号索引.....	32 ~ 33



# ARM-BED & CRANKSHAFT MECHANISM

## アーム・ベッド、主軸機構

Ref. No. 参照番号	Parts No. 部品番号	Name	名 称	Qt. 数量
1	202070	Machine arm-bed, complete with 202001, 202071, 1936x2 & 13795x2. (DC-MS205M, 220, 230 & 250 only)	アーム・ベッド(組)202001, 202071, 1936×2, 137950×2 トノ組 (DC-MS205, 220, 230, 250用)	1
	*202001	Machine arm	アーム	1
	*202071	Machine bed	ベッド	1
	1936	Machine arm-bed screw	アーム・ベッド締付ネジ	2
	137950	" " hinge pin	" " テーパーピン	2
2	202046	Brand plate	銘板	1
3	5132	Machine bed bolt (long)	ベッド取付ボルト(長)	2
4	5133	" " " (short)	" " (短)	1
5	202051	" " " washer	" " 座金	3
6	200211	Oil filler cup	オイルカップ	1
7	202074	Crankshaft, complete with 202075A & 200605. (DC-MS205, 220, 230 & 250 only)	クランクシャフト(組)202075 A, 200605 ノ組 (DC-MS205, 220, 230, 250用)	1
	*202075A	Crankshaft	クランクシャフト	1
	*200605	" " oil ring	" " 油受リング	1
8	200703	" " crank	エキセンクランク	1
9	5058	" " " position screw	" " 止メジ(先有)	1
10	2913-1	" " " screw	" " (先無)	1
11	200607	" " " oil plug	" " 油栓	1
12	200389	" " " wick	" " 給油フェルト	1
13	200707	" " bushing (DC-MS205, 220, 230 & 250 only)	小ブッシュ (DC-MS205, 220, 230, 250用)	1
14	2022-3	" " " screw	" " 止ネジ	1
15	202006	" " flanged bushing	大ブッシュ	1
16	2368	" " " " screw	" " 止ネジ	1
17	200633	" " bushing oil wick	小ブッシュ給油フェルト	1
18	202024	" " flanged bushing oil wick	大ブッシュ給油フェルト	1
19	202025	" " bushing and flanged bushing oil wick spring	大、小ブッシュ給油フェルト押エバネ	2
20	202026	" " " " flanged bushing oil wick spring clamp	" " " " 止板	2
21	4009-1	" " " " flanged bushing oil wick spring clamp screw	" " " " 止ネジ	2
22	200664	" " " oil wick clamp	小ブッシュ給油フェルト調節金	1
23	202007	Pulley	プーリー	1
24	5051	" " screw	" " 止ネジ(先無)	1
25	5052	" " position screw	" " (先有)	1
26	202019	" " name plate	" " 銘板	1

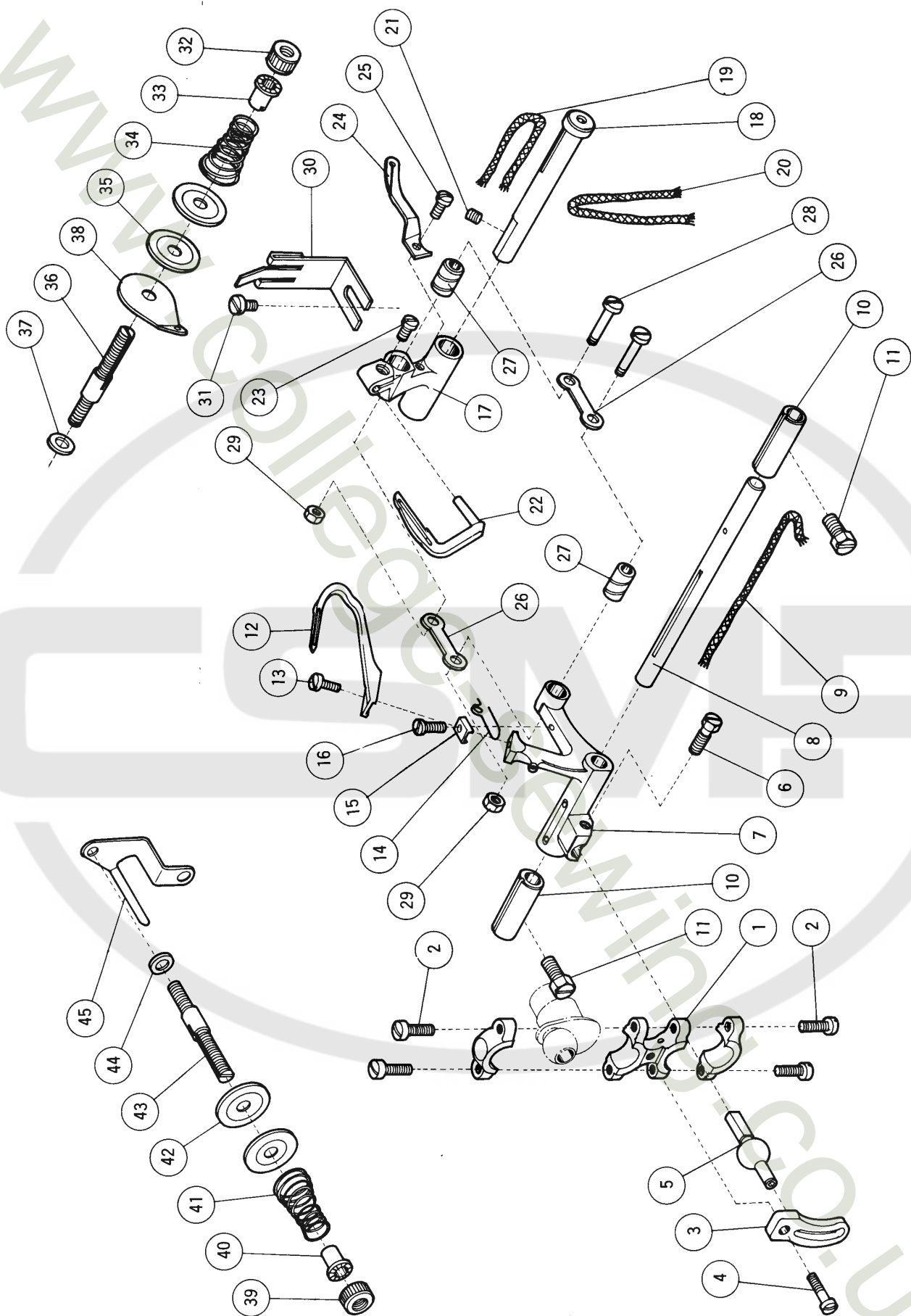




# NEEDLE DRIVE MECHANISM

## 針 棒 機 構

Ref. No. 参照番号	Parts No. 部品番号	Name	名 称	Qt. 数量
1	200034	Needle bar connection, complete with 200033 & 2213x4	大ロッド(組)200033,2213-1×4 トノ組	1
2	200033	" " connection	〃	1
3	2213-1	" " " cap screw	〃 蓋止ネジ	4
4	137130	" " " guide	〃 振り止メ	1
5	5010	" " " " screw	〃 〃 止ネジ	1
5	200534	" " drive crankshaft	針棒クランク軸	1
6	1234	" " " " plug screw	〃 〃 蓋ネジ	1
7	200265	" " " " ball stud	針棒後クランク球	1
8	2022-4	" " " " " screw	〃 止ネジ	1
9	200389	" " " " " oil wick	〃 給油フェルト	1
10	200037	" " " " bushing (front)	針棒クランク軸ブッシュ前	1
11	1457	" " " " " screw	〃 〃 〃 止ネジ	1
12	202010	" " " " " (rear)	〃 〃 後	1
13	1457	" " " " " screw	〃 〃 〃 止ネジ	1
14	200652	" " " " crank	針棒前クランク	1
15	2022	" " " " " screw	〃 止ネジ	2
16	200653	" " connecting link	針棒リンク	1
17	200654	" " " " " pin	〃 ピン	2
18	202177	" " " " " oil wick	〃 〃 給油紐	2
19	1222	" " " " " screw	〃 〃 止ネジ	2
20	200655	" " " " bracket	針棒抱キ	1
21	1170-3	" " " " " screw	〃 止ネジ	1
22	200531	" thread take-up	上糸振り糸道	1
23	1196	" " " " screw	〃 止ネジ	1
24	200709	" " " " retainer bracket	小調子台	1
25	1186	" " " " " screw	〃 止ネジ	1
26	192070	" " " " guide	小調子皿	1
27	70-1	" " " " spring	小調子バネ	1
28	9070-2	" " " " " screw	〃 止ネジ	1
29	137101	" " " " eyelet	上糸道	1
30	1216	" " " " " screw	〃 止ネジ	1
31	* * 200711	" bar, complete with 141122, 200713 & 5292x2 (DC-MS230 & 230D only)	針棒(組)141122,200713,5292×2 ノ組 (DC-MS230,230D用)	1
	* 141122	" bar	針棒	1
	* 200713	" clamp	針株	1
32	5292	" " screw	針止ネジ	2
33	D C × 1	Needle for overlock stitch or right needle	針	1
34	D M × 13	" for double chain stitch or left needle	〃	1
35	137123	" bar bushing	針棒ブッシュ	2
36	1457	" " " screw	〃 止ネジ	2
37	* * 200715A	" plate	針板(DC-MS230用,(カタン糸用))	1
38	1732	" " " screw (long)	〃 止ネジ(長)	1
39	5061	" " " " (short)	〃 〃 (短)	1
40	200716	" guard	針受	1
41	1202	" " " screw	〃 止ネジ	1
42	201035A	" thread tension nut	針糸調子ナット	2
43	201037	" " " " spring	〃 バネ	2
44	201039	" " " " " cup	〃 〃 受皿	2
45	101111	" " " " disc	〃 皿	4
46	1817-2A	" " " " post	〃 棒	2
47	202278	" " " " spring bushing	〃 〃 ナット止パイプ	2
48	3044	" " " " post nut	〃 〃 ナット	1
49	141105	" " " " guide	上糸調子台	1

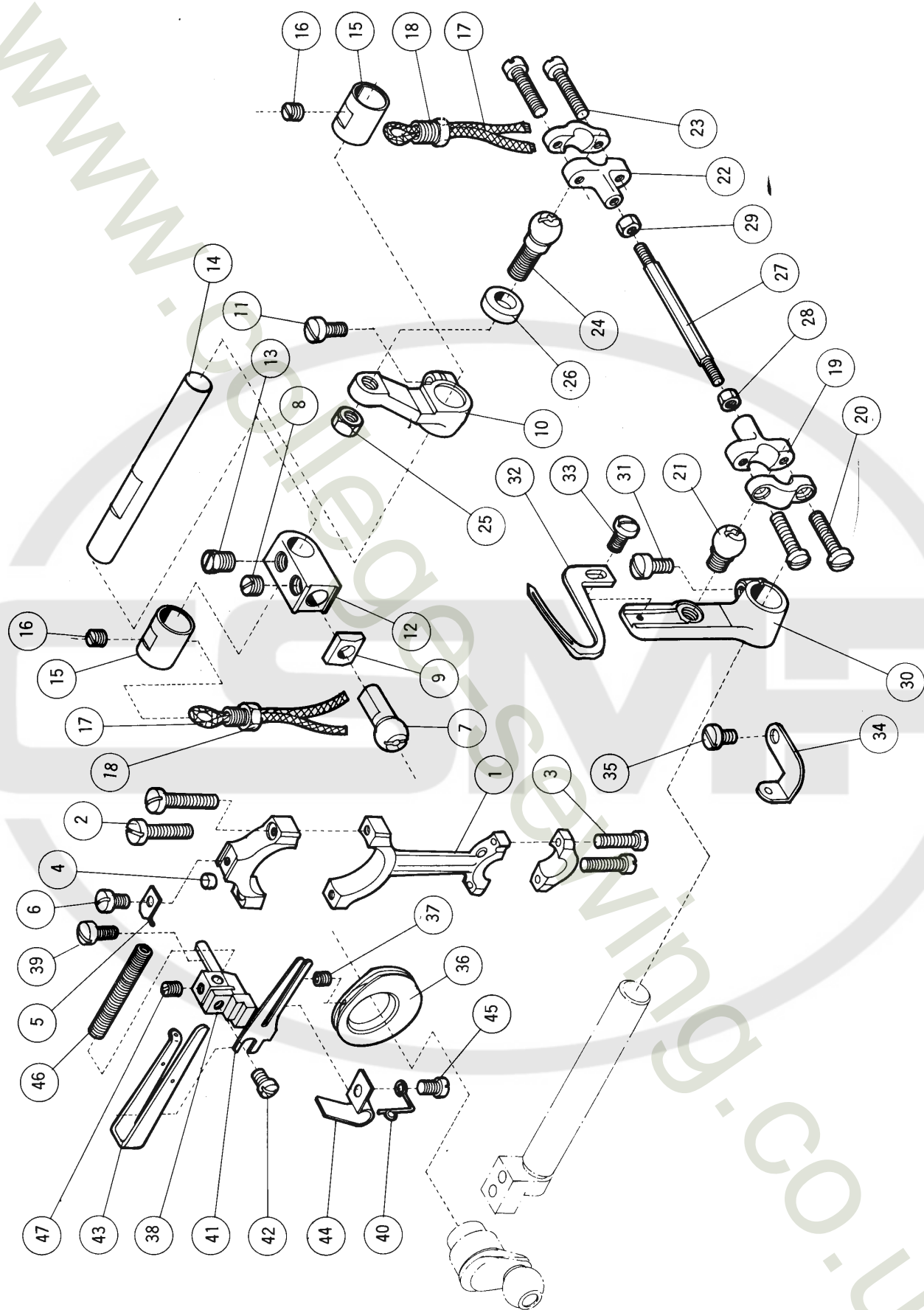




# RIGHT & LEFT LOOPER DRIVE MECHANISM

## 大・小 ル ー パ ー 機 構

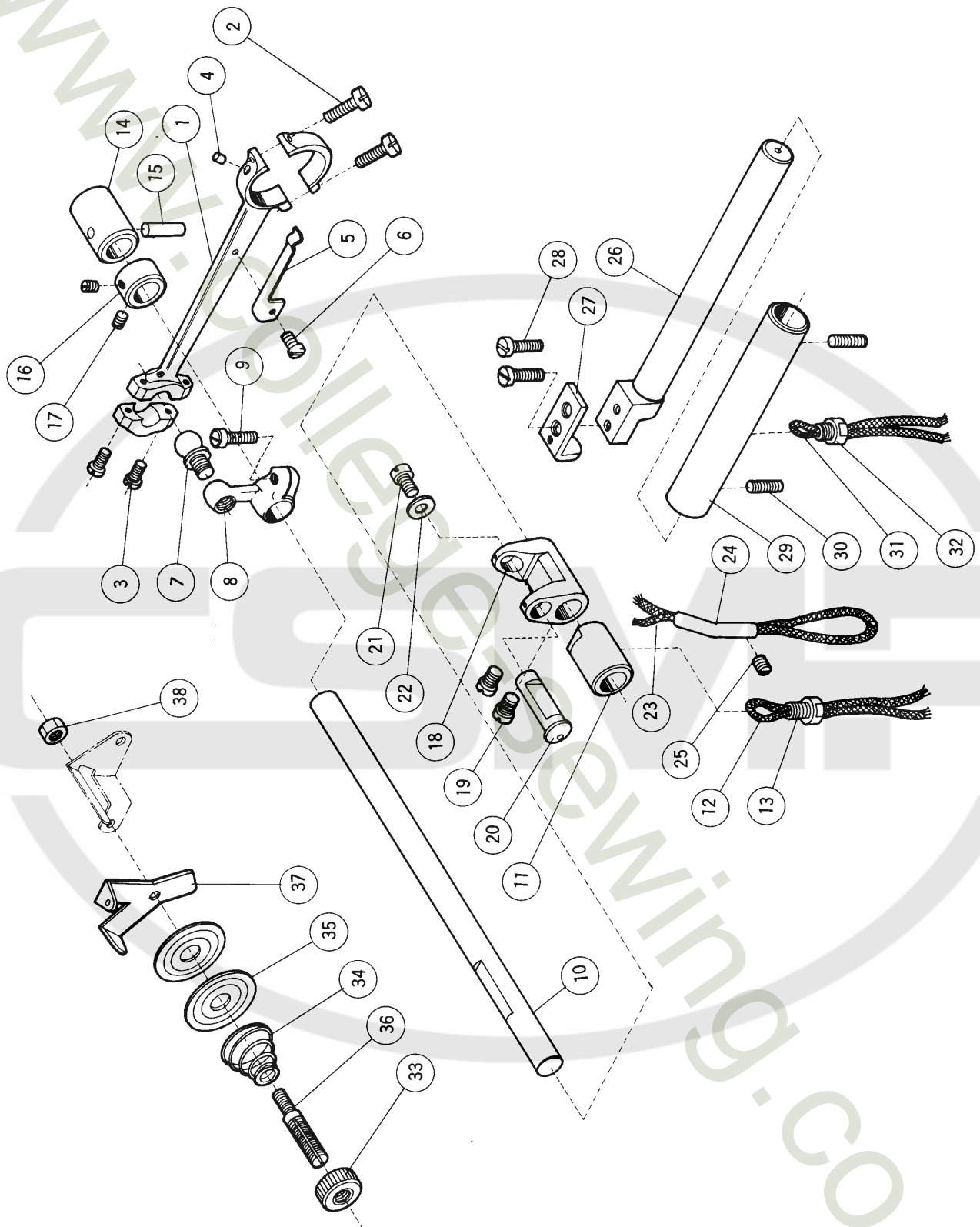
Ref. No.	Parts No.	Name	名 称	Qt.
参照番号	部品番号			数量
1	200618	Right looper drive connection	小ロッド	1
2	2213-1	" " " " cap screw	〃 蓋止ネジ	4
3	137130	" " " " guide	〃 振り止メ	1
4	5010	" " " " " screw	〃 〃 止ネジ	1
5	137121	" " " " ball stud	〃 球	1
6	2022-4	" " " " " " screw	〃 〃 止ネジ	1
7	202135	" " lever	大ルーパー台	1
8	200620	" " shaft	〃 ピン	1
9	202176	" " " " oil wick	〃 〃 給油紐	1
10	137409	" " " " bushing	割ブッシュ	2
11	2022-4	" " " " " screw	〃 止ネジ	2
12	* * 137301	" looper	大ルーパー	1
13	1196	" " screw	〃 止ネジ	1
14	137307 A	Left looper thread eyelet	大ルーパー台糸道	1
15	200947	" " " " clamp	〃 板金	1
16	2922	" " " " screw	〃 止ネジ	1
17	200624	" " lever	小ルーパー台	1
18	200625	" " shaft	〃 ピン	1
19	202176	" " " " oil wick	〃 〃 給油紐	1
20	202179	" " " " " wick	〃 〃 給油紐	1
21	2022-3	" " " " screw	〃 〃 止ネジ	1
22	* * 137302	" looper	小ルーパー	1
23	5053	" " screw	〃 止ネジ	1
24	200717	Right looper thread take-up	大ルーパー糸道	1
25	1196	" " " " screw	〃 止ネジ	1
26	200621A	Looper connecting link	ルーパーリンク	2
27	200622A	" " " " bushing	〃 ブッシュ	2
28	200623A	" " " " " screw	〃 締付ネジ	2
29	3044	" " " " " " nut	〃 〃 ナット	2
30	137104	Right looper thread staple	三又糸道	1
31	1216	" " " " screw	〃 止ネジ	1
32	3056	" " " " tension nut	前糸調子ナット	1
33	101113	" " " " spring bushing	〃 〃 止パイプ	1
34	137115	" " " " spring	〃 バネ	1
35	101111	" " " " disc	〃 皿	2
36	1817-2A	" " " " post	〃 棒	1
37	137142	" " " " " washer	〃 〃 座金	1
38	137106	" " " " " guide	〃 台	1
39	3056	Left looper thread tension nut	裏糸調子ナット	1
40	101113	" " " " spring bushing	〃 〃 止パイプ	1
41	137114	" " " " spring	〃 バネ	1
42	101111	" " " " disc	〃 皿	2
43	1817-2A	" " " " post	〃 棒	1
44	137142	" " " " " washer	〃 〃 座金	1
45	200718	" " " " guide	〃 台	1



## (1) DOUBLE CHAINSTITCH LOOPER DRIVE MECHANISM

## 二重環ルーパー機構 (1)

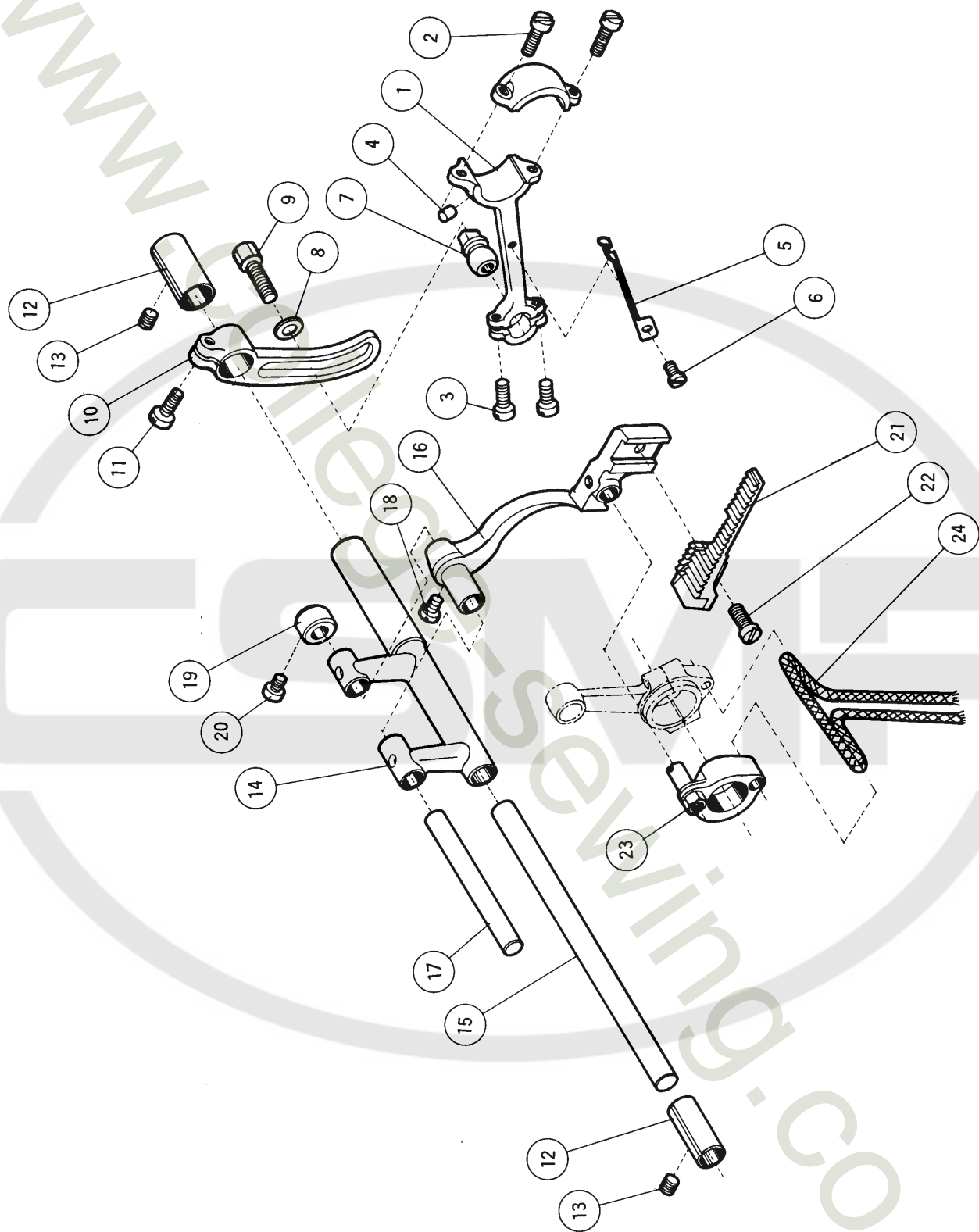
Ref. No.	Parts No.	Name	名 称	Qt.
参照番号	部品番号			数量
	202076	Looper drive connection, complete with 202077A, 2213-1x2 & 1170x2	二重環ルーパー振り大ロッド(組)202077A, 2213-1×2, 1170×2 ノ組	1
1	202077A	" " connection	" "	1
2	2213-1	" " " cap screw (large)	" " 蓋止ネジ(大)	2
3	1170	" " " " (small)	" " (小)	2
4	202081	" " " oil wick	" " 給油フェルト	1
5	202083A	" " " " " spring	" " 給油紐押エバネ	1
6	1216	" " " " " screw	" " " 止ネジ	1
7	200756	" " " ball stud	" " 球(小)	1
8	2022	" " " " screw	" " 止ネジ	1
9	200757	" " " guide	" " 振り止メファイバー	1
10	200758	" " crank (front)	二重環ルーパー振りクランク(前)	1
11	1156	" " " " screw	" " 止ネジ	1
12	200759	" " " (rear)	" " (後)	1
13	2022-4	" " " " screw	" " 止ネジ	1
14	200760	" " " shaft	二重環ルーパー振りクランク軸	1
15	200761	" " " " bushing	" " ブッシュ	2
16	2022	" " " " " screw	" " 止ネジ	2
17	202176	" " " " " oil wick	" " 給油紐	2
18	200742	" " " " " " screw	" " 止ネジ	2
19	202138	" " connecting rod end (left), complete with 1174x2	二重環ルーパー振り小ロッド(左)1174×2 トノ組	1
20	1174	" " " " " cap screw	" " 蓋止ネジ	2
21	200401	" " " " " ball stud	" " 球(左)	1
22	200396	" " " " (right), complete with 1174x2	" " (右)1174×2 トノ組	1
23	1174	" " " " " cap screw	" " 蓋止ネジ	2
24	200400	" " " " " ball stud	" " 球(右)	1
25	3018	" " " " " " nut	" " 止ナット	1
26	200398	" " " " guide	" " 振り止メ	1
27	200767	" " " rod	二重環ルーパー連結棒	1
28	3091	" " " " nut (left)	" " ナット(左)	1
29	3092	" " " " (right)	" " (右)	1
30	200782	" " lever	二重環ルーパー台	1
31	5064	" " clamp screw	" 止ネジ	1
32	**200785	Looper	二重環ルーパー	1
33	1202	" " screw	" 止ネジ	1
34	202136	" " thread eyelet	" 糸道	1
35	1202	" " " " screw	" " 止ネジ	1
36	200799B	" " " take-up	下糸調節器	1
37	5292	" " " " screw	" 止ネジ	1
38	200787A	" " " cast-off bracket	下糸調節台	1
39	5064	" " " " " screw	" 止ネジ	1
40	202137	" " " guide	" 糸道	1
41	200798B	" " " cast-off	下糸サバキ	1
42	1234	" " " " screw	" 止ネジ	1
43	200795A	" " " staple	二又糸道	1
44	200793	" " " " lock spring	" 押エバネ	1
45	1202	" " " " " " screw	" " 止ネジ	1
46	200719	" " " " guide tube	糸道パイプ	1
47	1457-1	" " " " " " screw	" 止ネジ	1



## (2) DOUBLE CHAINSTITCH LOOPER DRIVE MECHANISM

## 二重環ルーパ－機構 (2)

Ref. No. 参照番号	Parts No. 部品番号	Name	名 称	Qt. 数量
1	200768	Looper avoiding connection, complete with 5002x2 & 2918x2.	二重環ルーパ－前後ロッド(組)5002×2, 2918×2 トノ組	1
2	5002	" " " cap screw (large)	〃 〃 蓋止ネジ(大)	2
3	2918	" " " " " (small)	〃 〃 〃 (小)	2
4	202047	" " " oil wick	〃 〃 給油フェルト	1
5	200737	" " " " " spring	〃 〃 給油紐押エバネ	1
6	1186	" " " " " " " screw	〃 〃 〃 〃 〃 止メジ	1
7	200770	" " " " " ball stud	〃 〃 球	1
8	200771	" " " crank	二重環ルーパ－前後振りクランク	1
9	5002	" " " clamp screw	〃 〃 止ネジ	1
10	200772	" " " shaft	二重環ルーパ－前後振りシャフト	1
11	200773	" " " " " bushing (left)	〃 〃 ブッシュ(左)	1
12	202176	" " " " " " oil wick	〃 〃 〃 〃 給油紐	1
13	200742	" " " " " " " " screw	〃 〃 〃 〃 〃 止ネジ	1
14	200773	" " " " " " (right)	〃 〃 〃 (右)	1
15	200741	" " " " " " oil wick	〃 〃 〃 給油フェルト	1
16	200775	" " " " " collar	〃 〃 カラー	1
17	1457-1	" " " " " screw	〃 〃 〃 止ネジ	2
18	200776	" " " link	二重環ルーパ－前後振りリンク	1
19	2237	" " " " " screw	〃 〃 止ネジ	2
20	200777	" " " " " pin	〃 〃 ピン	1
21	1196	" " " " " plug screw	〃 〃 〃 蓋ネジ	1
22	202757	" " " " " thrust washer	〃 〃 〃 スラストワッシャー	1
23	202176	" " " " " oil wick	〃 〃 給油紐	1
24	200632	" " " " " tube	〃 〃 給油管	1
25	1457	" " " " " " screw	〃 〃 〃 止ネジ	1
26	200779	" " lever shaft	二重環ルーパ－台シャフト	1
27	200780	" " " " " guide	〃 〃 L形	1
28	1175-3	" " " " " screw	〃 〃 〃 止ネジ	2
29	200781	" " " " " bushing	〃 〃 ブッシュ	1
30	1435	" " " " " " screw	〃 〃 〃 止ネジ	2
31	202176	" " " " " " oil wick	〃 〃 〃 〃 給油紐	1
32	200742	" " " " " " " " screw	〃 〃 〃 〃 〃 止ネジ	1
33	3056	" " thread tension nut	下糸調子ナット	1
34	167077	" " " " " spring	〃 バネ	1
35	101111	" " " " " disc	〃 皿	2
36	167072	" " " " " post	〃 棒	1
37	200204	" " " " " guide	〃 台	1
38	3044	" " " " " post nut	〃 棒取付ナット	1



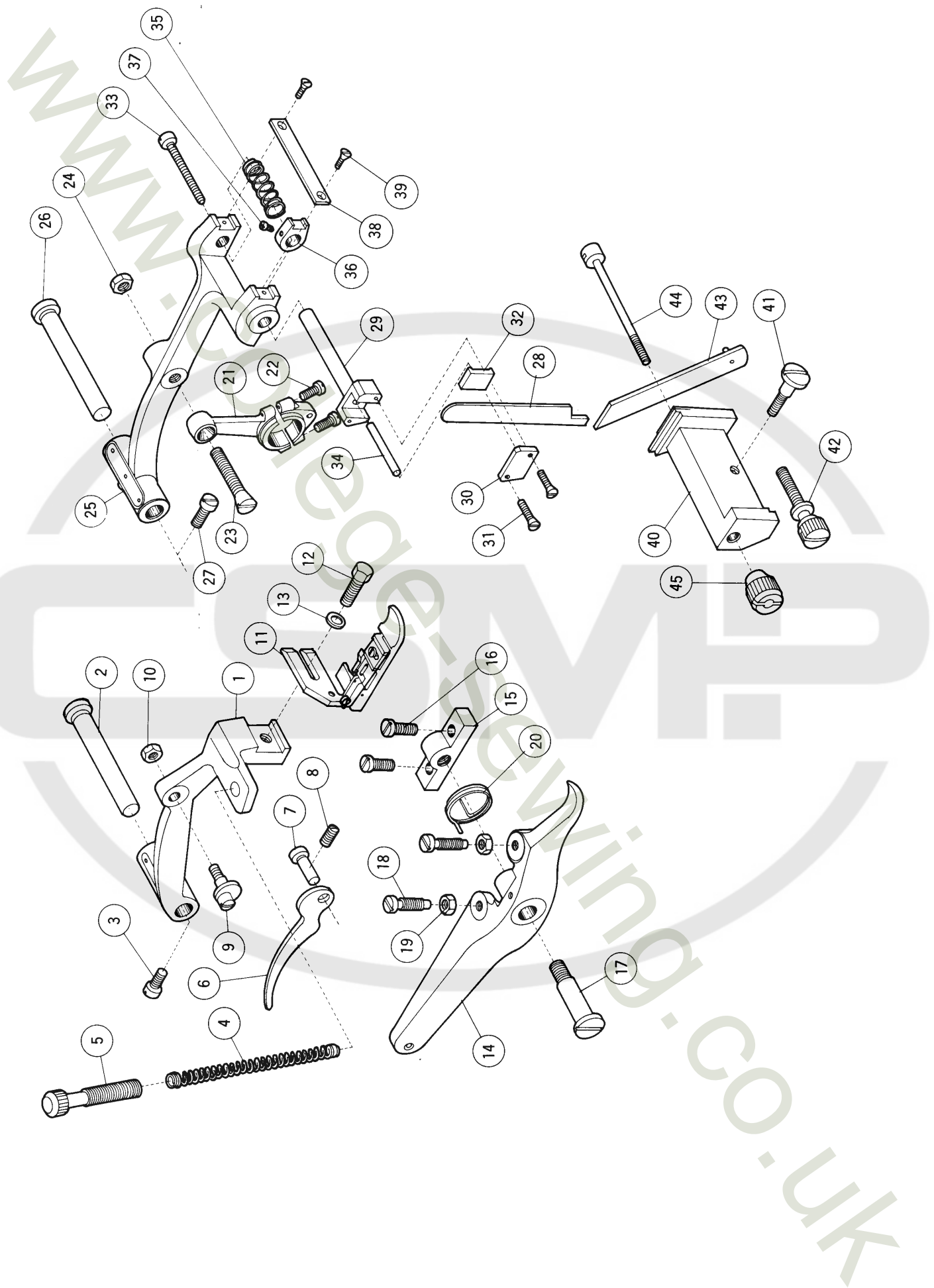


# FEED MECHANISM

## 送り機構

Ref. No. 参照番号	Parts No. 部品番号	Name	名 称	Qt. 数量
1	200503	Feed drive connection, complete with 5002x2 & 5003x2	送り前後ロッド(組) 5002×2, 5003×2 トノ組	1
2	5002	" " " cap screw (large)	〃 蓋止ネジ(大)	2
3	5003	" " " (small)	〃 〃 (小)	2
4	202047	" " " oil wick	〃 給油フェルト	1
5	200737	" " " " " spring	〃 給油紐押エバネ	1
6	1186	" " " " " " screw	〃 〃 〃 止ネジ	1
7	137419	" " " ball stud	〃 球	1
8	137142	" " " " " washer	〃 〃 座金	1
9	5001	" " " " " screw	〃 〃 止ネジ	1
10	200322	" regulating segment	送り調節器	1
11	1156	" " " clamp sprew	〃 抱締ネジ	1
12	137409	" rocker pin bushing (One piece only requires for DC-MS205D, 220D, 230D & 250D)	割ブッシュ (DC-MS205D, 220D, 230D, 250Dハ所要数1ヶ)	2
13	2022-3	" " " " " screw	〃 止ネジ	2
14	140402	" rocker	送りロックシャフト	1
15	137417	" " " pin	送り台シャフト	1
16	202088	" bar	送りが付台	1
17	137442	" " hinge pin	〃 ピン	1
18	2237	" " " " " screw	〃 〃 止ネジ	1
19	137442-1	" " " " " collar	〃 〃 カラー	1
20	5053	" " " " " " screw	〃 〃 〃 止ネジ	1
21	* *200723A	" dog	送り歯	1
22	1175-2	" " " screw	〃 止ネジ	1
23	200627	" lift connection, complete with 200628 & 200629	送り上下ダルマ(組) 200628, 200629トノ組	1
	*200628	" " " " " screw	〃 芯ネジ	1
	*200629	" " " " " nut	〃 〃 ナット	1
24	202176	" " " oil wick (also used for upper knif drive connection)	〃 給油紐 (上メスロッド共用)	1

★ The parts, whose reference numbers are 14 to 24,  
are used only for model DC-MS205, 220, 230 & 250.



# PRESSER FOOT & LIFT MECHANISM

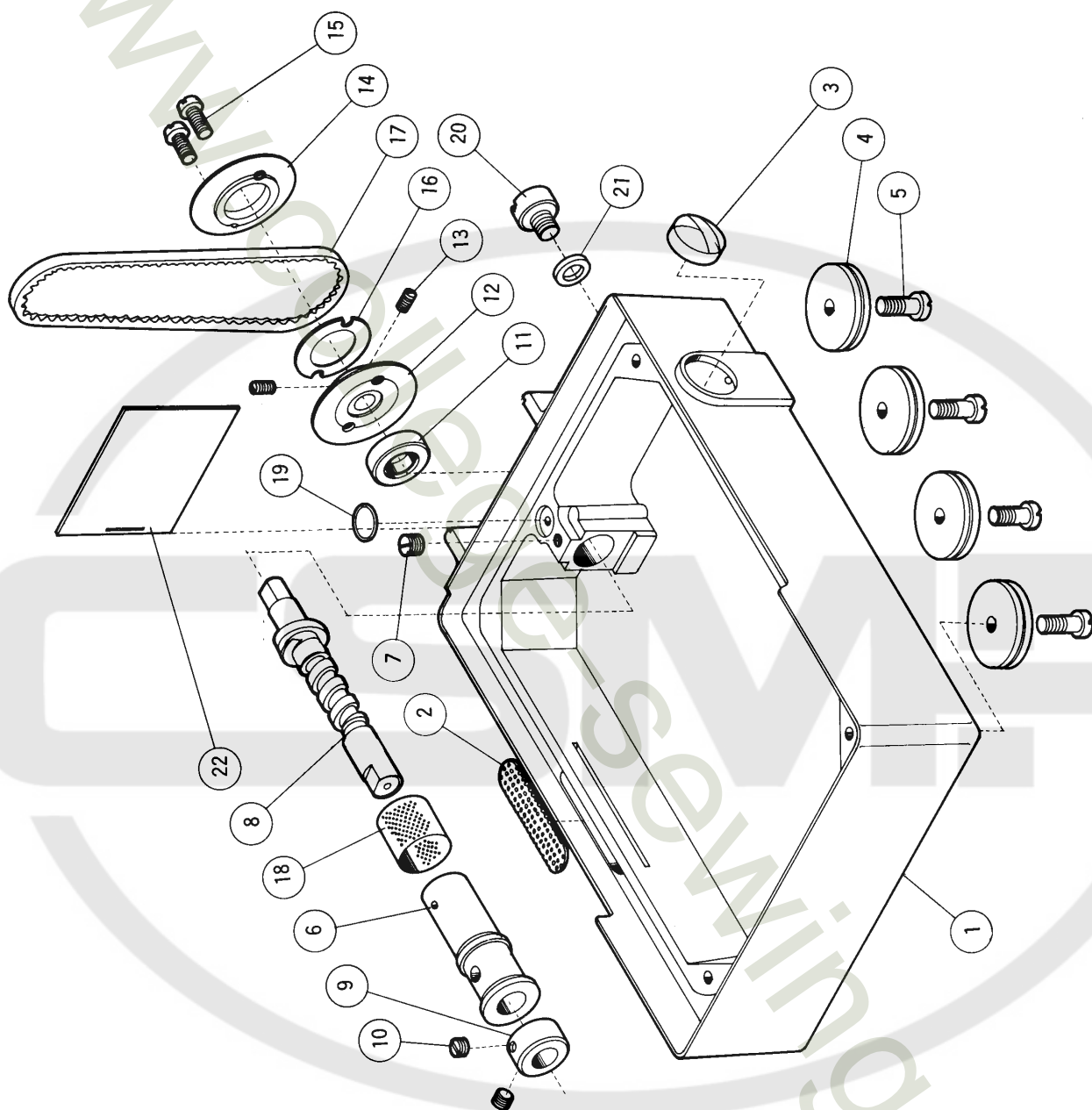
## 押 工 機 構

Ref. No.	Parts No.	Name	名 称	Qt.
参照番号	部品番号			数量
1	137140	Presser arm (DC-MS205, 220, 230 & 250 only)	押エ台 (DC-MS 205, 220, 230, 250用)	1
2	137552	" " pivot stud	〃 ピン	1
3	2213	" " " " screw	〃 〃 止ネジ	1
4	137141	" spring	〃 バネ	1
5	2371	" " regulating thumb screw	〃 〃 調節ネジ	1
6	137143	Hand lift lever	押エ手揚げ	1
7	5056	" " " pin	〃 ピン	1
8	1458	" " " " screw	〃 〃 止ネジ	1
9	2370	" " " " eccentric screw	〃 エキセンネジ	1
10	3044	" " " " " nut	〃 〃 ナット	1
11	**200731	Presser foot, complete	押エ(組)	1
12	2308	" " " screw	〃 止ネジ	1
13	137142	" " " " washer	〃 〃 座金	1
14	137146	Foot lift lever	押エ足揚げ	1
15	137145A	" " " " bracket	〃 台	1
16	2213	" " " " " screw	〃 〃 止ネジ	2
17	2285	" " " " pivot stud	〃 取付ネジ	1
18	2133	" " " " adjust screw	〃 調節ネジ	2
19	3044	" " " " " nut	〃 〃 ナット	2
20	137147	" " " " spring	〃 バネ	1

# UPPER & LOWER KNIFE MECHANISM

## 上・下 メ ス 機 構

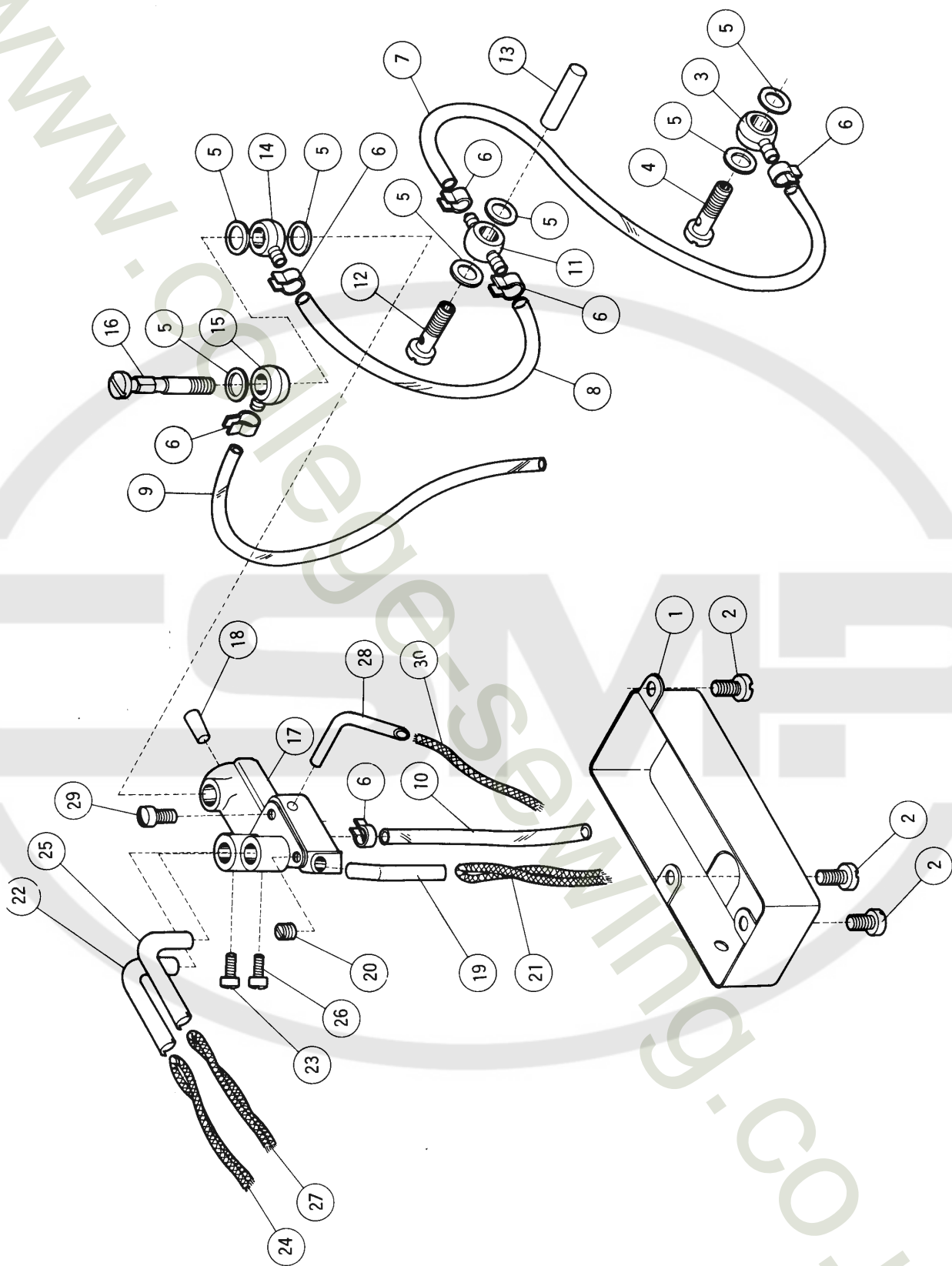
21	200631	Upper knife drive connection, complete with 1174x2	上メスロッド(組) 1174×2 トノ組	1
22	1174	" " " " cap screw	〃 蓋止ネジ	2
23	2366-2	" " " " stud	〃 テーパーネジ	1
24	3018	" " " " " nut	〃 〃 ナット	1
25	200725A	" " " lever	上メス台	1
26	137552	" " " " pin	〃 ピン	1
27	2133-1	" " " " " screw	〃 〃 止ネジ	1
28	**138559	" knife	上メス	1
29	138555A	" " carrier	上メス抱キ	1
30	138555-1	" " " cap	〃 蓋	1
31	5224	" " " " " screw	〃 〃 止ネジ	2
32	138556	" " " clamp	上メス押シ	1
33	1132	" " " " screw	〃 ネジ	1
34	137560	" " " " pin	〃 ピン	1
35	137558	" " " " spring	〃 バネ	1
36	137554	" " " guide	上メス案内	1
37	1222	" " " " screw	〃 止ネジ	1
38	137553	" " " " bar	〃 板	1
39	5259	" " " " " screw	〃 〃 止ネジ	2
40	200726	Lower knife carrier	下メス台	1
41	5065	" " " " screw	〃 止ネジ	1
42	5070	" " " " adjust screw	〃 調節ネジ	1
43	**137562	" knife	下メス	1
44	137563	" " clamp	〃 止ピン	1
45	5069	" " " " nut	〃 〃 ナット	1



## (1) PUMP LUBRICATING MECHANISM

## 給 油 機 構 (1)

Ref. No.	Parts No.	Name	名 称	Qt.
参照番号	部品番号			数量
1	202012	Oil pan, complete with 200119 & 200120	オイルパン(組)200119, 200120トノ組	1
2	200119	" " filter	" 油濾金網	1
3	* 200120	" sight gauge	オイルゲージ	1
4	202013	Cushion rubber, complete with 202058	クッションゴム(組)202058トノ組	4
	* 202058	" " washer	" 座金	4
5	5134	" " screw	" 止ネジ	4
6	202015	Sleeve	スリーブ	1
7	5060	" screw	" 止ネジ	1
8	202016	Spiral shaft	螺旋軸	1
9	201139	" " thrust collar	" スラストカラー	1
10	1457	" " " " screw	" " 止ネジ	2
11	202017	" " oil seal	オイルシール	1
12	202048	Oil pump pulley (right)	ポンププーリー(A)	1
13	1459	" " " " screw	" " 止ネジ	2
14	202049A	" " " (left)	" " (B)	1
15	5293	" " " " screw	" " 止ネジ	2
16	202066	" " " washer	" 調節ワッシャー	1
17	202021	" " " belt	ポンプベルト	1
18	202022A	" filter	フィルター	1
19	202023	" pump outlet "O" ring	吐出口Oリング	1
20	5138B	" drain plug screw	排油穴蓋ネジ	1
21	202287A	" " " " washer	" 座金	1
22	202044A	" pan slide plate	オイルパン差板	1

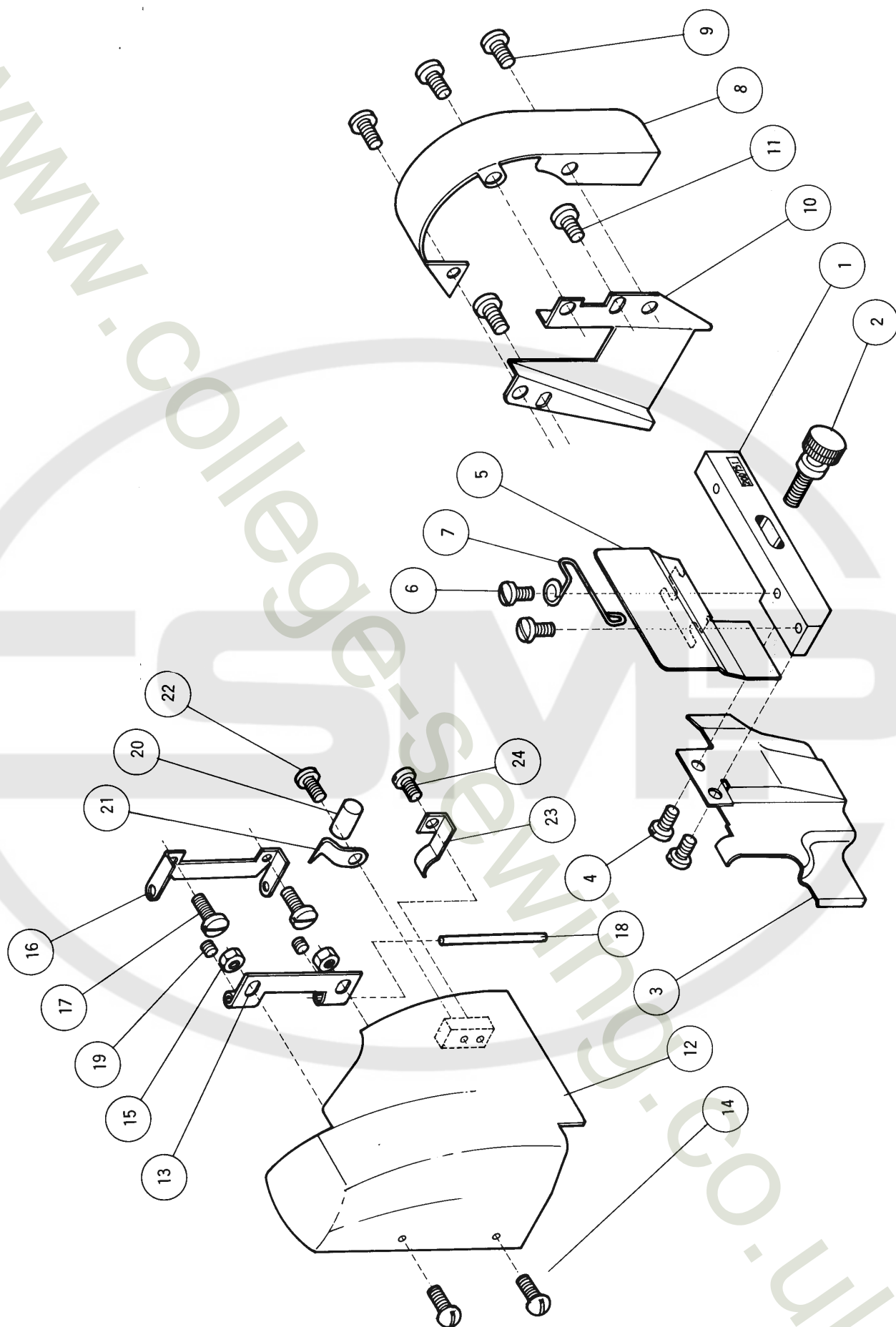




## (2) PUMP LUBRICATING MECHANISM

## 給 油 機 構 (2)

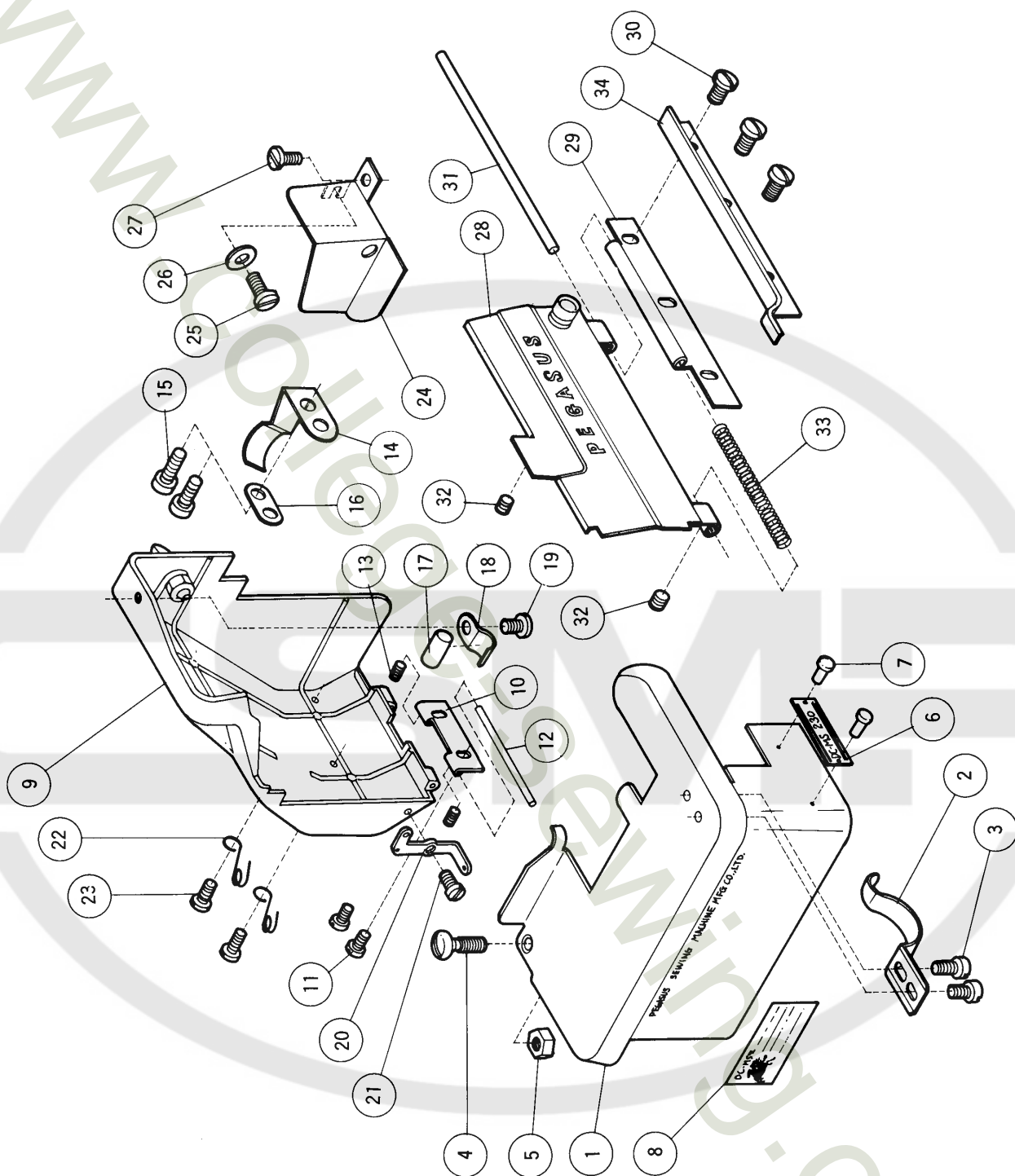
Ref. No. 参照番号	Parts No. 部品番号	Name	名 称	Qt. 数量
1	202027	Machine frame bottom cover	底カバー	1
2	4009-1	" " " " screw	" 止ネジ	3
3	200136	Oil vinyl tube joint	ベッド吐出管継手(雌)	1
4	200137	" " " " stud	" (雄)	1
5	200138	" " " washer	給油管継手パッキン	7
6	202199	" " " clamp	ビニールパイプ抱キバネ	6
7	202028	" " tube	上軸給油ビニールパイプ	1
8	200134A	" " tube	油配分器用ビニールパイプ	1
9	200699	" " tube	排油用ビニールパイプ	1
10	200698	" " tube	油配分器排油用ビニールパイプ	1
11	202032	" " " joint	上軸給油管継手(雌)	1
12	200137	" " " " stud	" (雄)	1
13	202033	Needle bar drive crankshaft oil wick	上軸給油フェルト	1
14	200136	Oil vinyl tube joint	油配分器用ビニールパイプ継手(雌)	1
15	200136	" " " joint	排油用ビニールパイプ継手(雌)	1
16	202034	" distributor joint stud	油配分器継手(雄)	1
17	202035A	" distributor	油配分器	1
18	202903	" " plug	" 油栓	1
19	200632	" tube	トリプルエキセン給油管	1
20	5113	" " screw	" " 止ネジ	1
21	202176	Oil wick	" 給油紐	1
22	202040	" tube	送りロックシャフト給油管	DC-MS 1
23	5064	" " screw	" 止ネジ	205, 220, 1
24	202176	" wick	" 給油紐	230, 250用 1
25	202040	" tube	上メス台給油管	1
26	5060	" " screw	" " 止ネジ	1
27	202176	" wick	" 給油紐	1
28	202079	" tube	二重環ルーバー振り大ロッド給油管	1
29	2924	" " screw	" " 止ネジ	1
30	202175	" wick	" 給油紐	1



## (1) MACHINE FRAME AND MISCELLANEOUS COVERS

## カバ-・外装機構 (1)

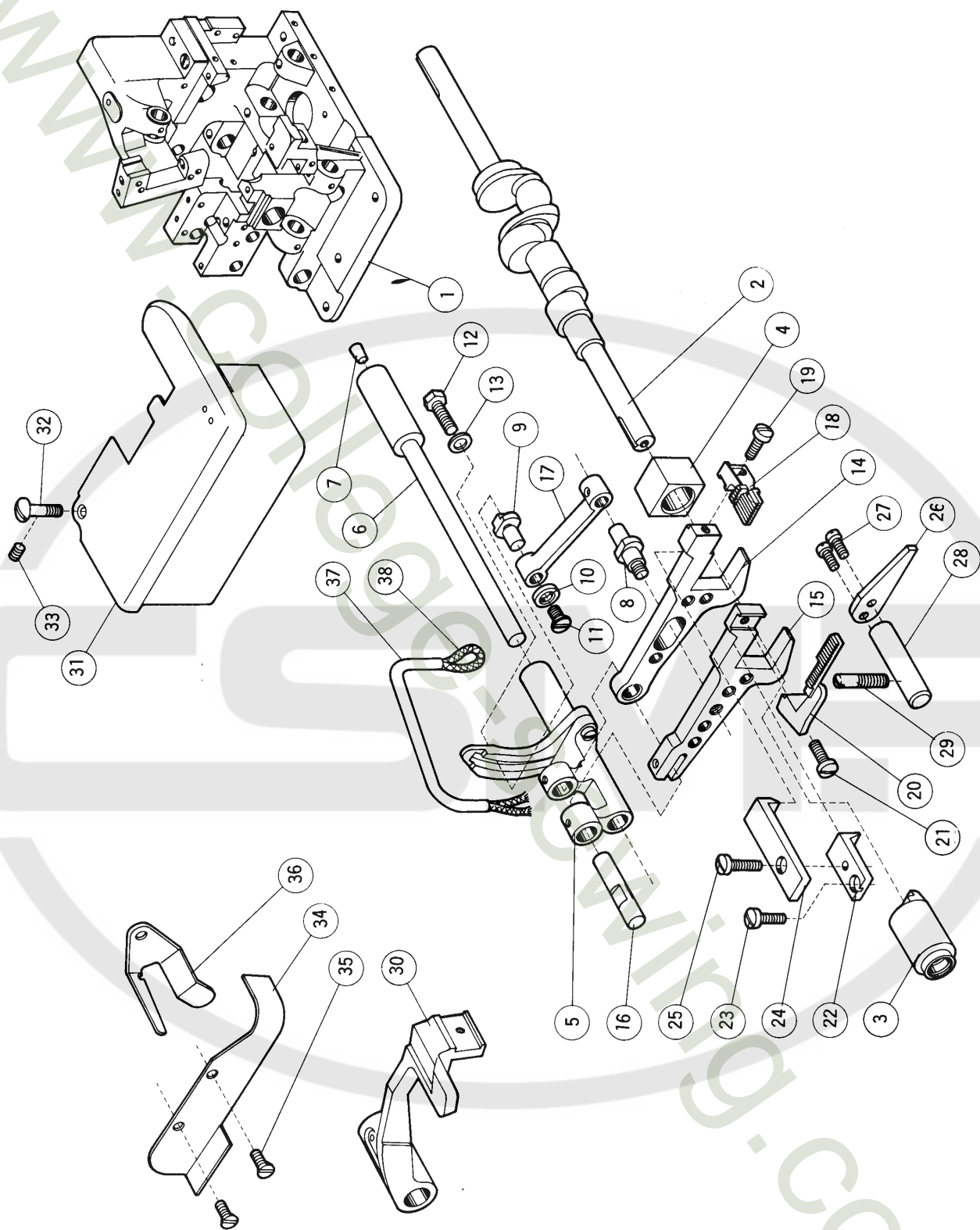
Ref. No. 参照番号	Parts No. 部品番号	Name	名 称	Qt. 数量
1	200751	Front cover extension holder	角台	1
2	1281	" " " " screw	〃 止ネジ	1
3	200752	Frame front oil shield	〃 カバー	1
4	1216	" " " " screw	〃 〃 止ネジ	2
5	202087A	Front cover extension	切屑除ケ	1
6	1202	" " " " screw	〃 止ネジ	2
7	200187A	" " " " lock spring	前カバー止バネ	1
8	202008	Pulley cover	プ-リーカバー	1
9	4009-1	" " " " screw	〃 止ネジ	3
10	202050	Oil pump belt cover	ベルトカバー	1
11	1196	" " " " screw	〃 止ネジ	2
12	200670A	Needle bar cover	上カバー	1
13	200168	" " " " hinge (interior)	〃 ヒンジ(A)	1
14	1326	" " " " " " screw	〃 〃 〃 止ネジ	2
15	3091	" " " " " " " nut	〃 〃 〃 ナット	2
16	200671	" " " " " (exterior)	〃 〃 (B)	1
17	2905	" " " " " " screw	〃 〃 〃 止ネジ	2
18	200672	" " " " " " pin	〃 〃 ピン	1
19	5023	" " " " " " screw	〃 〃 〃 止ネジ	2
20	200697	" " " " " " rubber catch	〃 当ゴム	1
21	200174	" " " " " " washer	〃 〃 座金	1
22	5136	" " " " " " " screw	〃 〃 〃 止ネジ	1
23	200673	" " " " " " lock spring	〃 止バネ	1
24	5136	" " " " " " " screw	〃 〃 止ネジ	1



## (2) MACHINE FRAME AND MISCELLANEOUS COVERS

## カバ-・外装機構 (2)

Ref. No. 参照番号	Parts No. 部品番号	Name	名 称	Qt. 数量
1	200743 *200744 *200745	Cloth plate, complete with 200744 & 200745 " plate " " extension	DC-MS 大カバー(組)200744, 200745ノ組 205, 220, " (上) 230 & " (下) 250 only " 裏パネ	DC-MS 1 205, 220, 1 230, 250用 1
2	137008	" " lock spring	" " 止ネジ	1
3	1234	" " " " screw	" " 止ネジ	2
4	2419	" " screw	" 止ネジ	1
5	3144	" " " nut	" " ナット	1
6	202073	Model plate (DC-MS230 only)	形式板 (DC-MS230用)	1
7	137011	" " pin	" 止ピン (白)	2
8	202082 B	Patent plate	特許マーク	1
9	200640 A *200170	Frame cover (rear), complete with 200170 & 3044 " " " knob	後カバー(組)200170, 3044トノ組 " ツマミ	1 1
	3044	" " " " nut	" " ナット	1
10	200168	" " " hinge	" ヒンジ	1
11	1216	" " " " screw	" " 止ネジ	2
12	200169	" " " " pin	" " ピン	1
13	5025	" " " " " screw	" " " 止ネジ	2
14	200172	" " " lock spring	" 止パネ	1
15	1175-2	" " " " " screw	" " 止ネジ	2
16	200162	" " " " " " washer	" " " 座金	1
17	200697	" " " " rubber catch	" 当ゴム	1
18	200174	" " " " " washer	" " 座金	1
19	2905	" " " " " " screw	" " " 止ネジ	1
20	200783 A	Thread guide	" 糸道(A)	1
21	5012	" " " screw	" " 止ネジ	1
22	193174	" " eyelet	" " (B)	2
23	1326	" " " screw	" " 止ネジ	2
24	200641	Needle bar connection cover	大ロッドカバー	1
25	4009	" " " " " screw (rear)	" 止ネジ(後)	1
26	137142	" " " " " " washer	" " " 座金	1
27	1175-2	" " " " " (front)	" " (前)	1
28	200746	Front cover, complete with 200747, 200748x2 & 200186	前カバー(組)200747, 200748×2, 200186ノ組	1
	*200747	" cover	" 本体	1
	*200748	" " hinge(interior)	" ヒンジ(上)	2
	*200186	" " knob	" ツマミ	1
29	200184	" " hinge (exterior)	" ヒンジ(下)	1
30	1216	" " " " " screw	" " " 止ネジ	3
31	200749	" " " pin	" " ピン	1
32	5025	" " " " " screw	" " " 止ネジ	2
33	200750	" " " " " spring	" " " パネ	1
34	200260	Arm-bed & oil pan interstice cover	オイルパン隙間カバー	1





**PARTS FOR MODEL DC-MS205D, 220D, 230D & 250D ONLY**  
**DC-MS205D, 220D, 230D, 250D 専用部品**

Ref. No. 参照番号	Parts No. 部品番号	Name	名 称	Qt. 数量
1	202131	Arm-bed, complete with 202001, 202104, 137950x2 & 1936x2	アーム・ベッド(組)202001,202104, 137950×2, 1936×2 ノ組	1
	*202104	Machine bed	ベッド	1
2	202105	Crankshaft	クランクシャフト	1
3	202106	" bushing	小ブッシュ	1
4	200502	Feed lift block	送り上下角玉	1
5	202183	" rocker, complete with 202182, 1170-3x2 & 200308	送りロックシャフト(組)202182, 1170-3×2, 200308ノ組	1
	*202182	Differential feed regulator	差動送り調節器	1
	1170-3	" " " " screw	" 止ネジ	2
	*200308	Feed rocker	送りロックシャフト	1
6	200089	" " pivot shaft	" ピン	1
7	202903	" " " " oil plug	" 油栓	1
8	200316	Differential feed drive adjust connection screw stud	差動調節桿ピン	1
9	200097	" " " " stud	差動調節器	1
10	200099	" " " " " thrust washer	" スラストワッシャー	1
11	3001	" " " " " " screw	" 止ネジ	1
12	2308	" " " " " screw	" 止ネジ	1
13	200098	" " " " " washer	" 座金	1
14	200311	Feed bar	主送り台	1
15	200312	Differential feed bar	差動送り台	1
16	200315A	Feed bar pin	送り台ピン	1
17	200314	Differential feed drive adjust connection	差動調節桿	1
18	202109A	Main feed dog	主送り歯	1
19	1175-2	" " " screw	" 止ネジ	1
20	202110A	Differential feed dog	差動送り歯	1
21	1175-2	" " " screw	" 止ネジ	1
22	202112	Feed bar guide (middle)	送り台案内金(中)	1
23	5136	" " " " screw	" 止ネジ	1
24	202111	" " " (upper)	" (上)	1
25	1174	" " " " screw	" 止ネジ	1
	200085	" " " (lower), complete with 200083, 200084 & 1170-3x2	" (下)(組)200083, 200084, 1170-3×2ノ組	1
26	200083	" " " (lower)	" "	1
27	1170-3	" " " " screw	" 止ネジ	2
28	200084	" " " " bracket	" 土台	1
29	1419	" " " " " screw	" 止ネジ	1
30	200109	Presser arm	押エ台	1
31	202132	Cloth plate, complete with 202114 & 200745	大カバー(組)202114, 200745ノ組	1
	*202114	" plate	" (上)	1
32	5170	" " screw	" 止ネジ	1
33	1457-1	" " set screw	" セットネジ	1
34	202115	" " fabric guard	衣除ケ	1
35	2921	" " " " screw	" 止ネジ	2
36	202134	Left looper thread tension guide	裏糸調子台	1
37	202113	Oil tube	送り台給油パイプ	1
38	202176	" wick	" 給油紐	1

○ **DC-MS 230** ○

1

○ **DC-MS 230D** ○

2

○ **DC-MS 250** ○

3

○ **DC-MS 205** ○

4

○ **DC MS 220** ○

5

○ **DC-MS 205D** ○

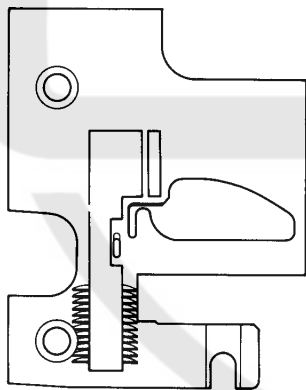
6

○ **DC-MS 220D** ○

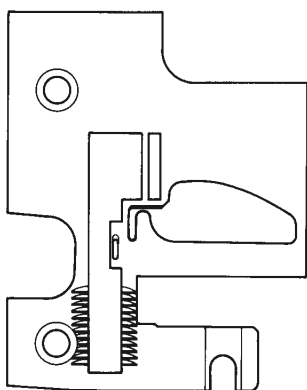
7

○ **DC-MS 250D** ○

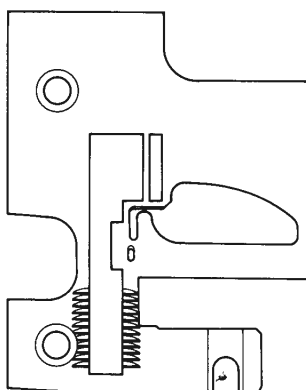
8



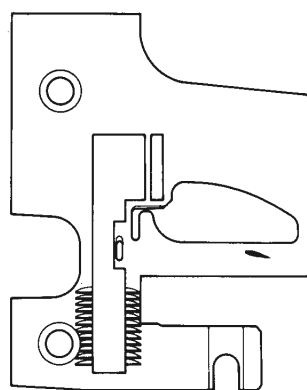
9



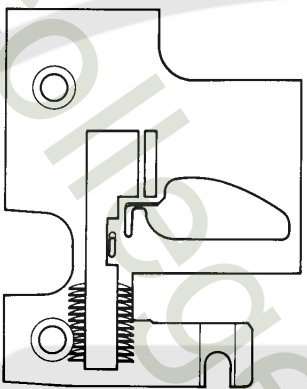
11



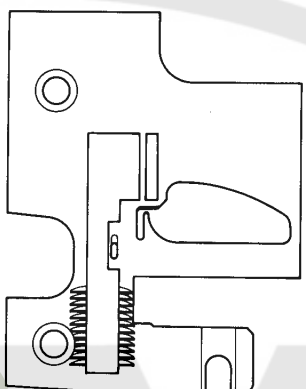
15



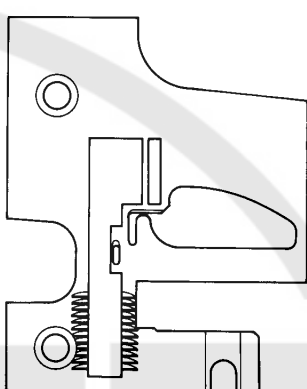
19



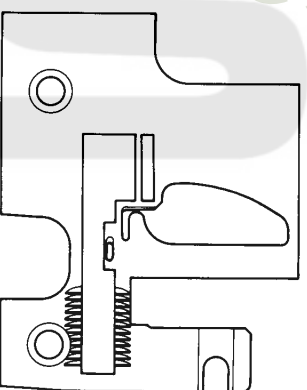
12



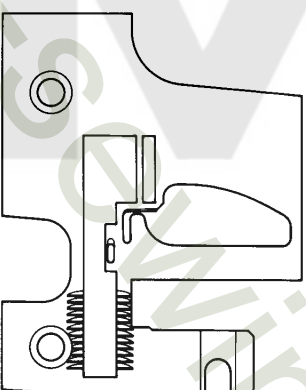
16



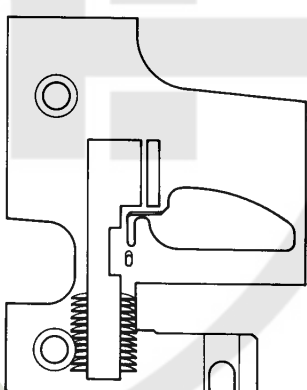
20



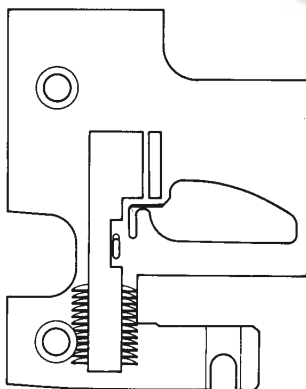
13



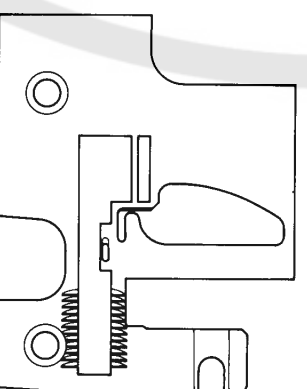
17



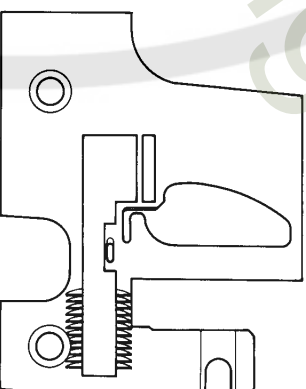
21



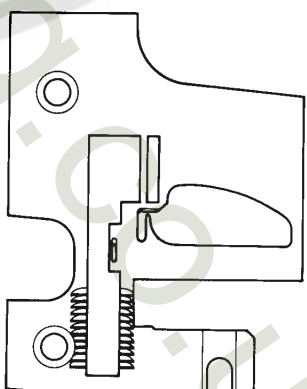
10



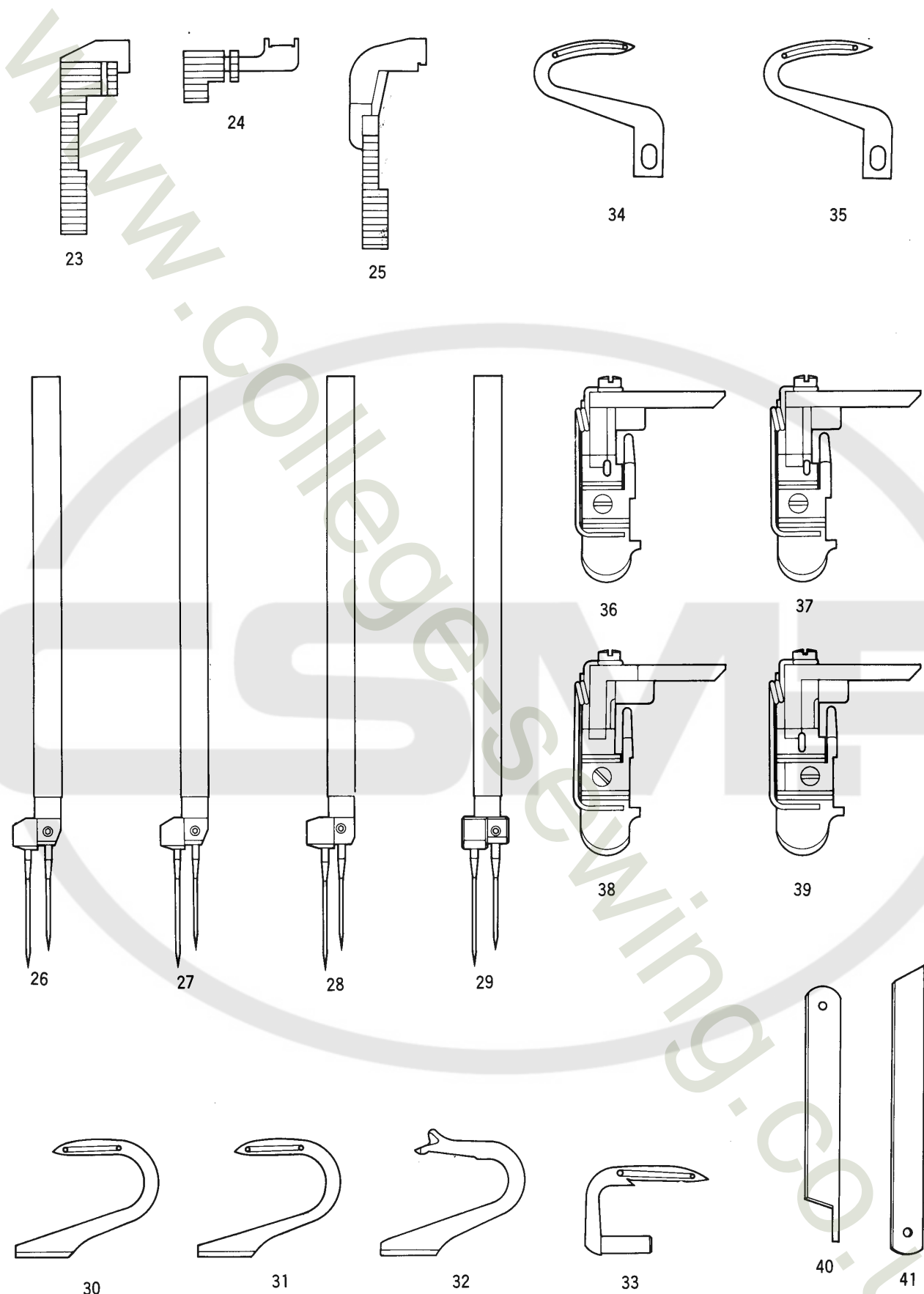
14



18



22



# LIST OF ORGANIZATION PARTS

## ゲージ・パーツ表

### ゲージ・パーツ表ご利用に際して

- このゲージ・パーツ表には、機種、ゲージ（針巾×縫巾）、オーバーロック側に使用される糸の種類、本数別に各ゲージ・パーツを記載しています。  
太字で表示している機種はDC-MSシリーズの標準機種であります。（注）縫巾とはオーバーロック縫巾です。
- このゲージ・パーツ表に記載されている押エ（組）は、押エ本体ピン200796、押エ200734、押エ爪200735A、押エ爪止ネジ1231、押エ補助バネ200729A、押エ補助バネ止ネジ1229、（使用数各1）の全機種共通パーツと、DC-MS230, 230D用(200731) には押エ本体200733が組合されています。  
DC-MS220, 220D用(200730)                      ♪      200732                      ♪  
DC-MS205, 205D用(202120)                      ♪      202121                      ♪  
DC-MS250, 250D用(202086)                      ♪      202101                      ♪
- 針棒（組）は針棒141122、針止ネジ5292（使用数2）の全機種共通パーツと、DC-MS230, 230D用(700711) には針株700713が組合されています。  
DC-MS220, 220D用(200710)                      ♪      200712                      ♪  
DC-MS205, 205D用(202119)                      ♪      202118                      ♪  
DC-MS250, 250D用(202100)                      ♪      202084                      ♪

Model	Gauge(Needle gauge × Seam width)	Threads used for overlock stitch.	Page	Ref. No.	Model plate	Page	Ref. No.	Needle plate	Page	Ref. No.	Feed dog (Plain feed)	Page	Ref. No.	Main feed dog	Page	Ref. No.	Differential feed dog
形 式	ゲージ(mm) (針巾×縫巾)	オーバーロック側 使 用 糸	頁	参照 番号	形 式 板	頁	参照 番号	針 板	頁	参照 番号	送り 歯 (1枚送り)	頁	参照 番号	主送り歯	頁	参照 番号	差 動 送り 歯
DC-MS230	3mm×3mm	カタン糸又ハウリー糸 Cotton or Woolly yarn	26	1	202073	26	9	200715A	27	23	200723A						
〃	〃	綿 糸 Soft (Spool)	〃	〃	〃	〃	10	200949	〃	〃	〃						
〃	〃	カタン糸又ハウリー糸 (2本糸) Cotton or Woolly yarn (2-thread machine)	〃	〃	〃	〃	11	200953	〃	〃	〃						
DC-MS220	2mm×3mm	カタン糸又ハウリー糸 Cotton or Woolly yarn	26	2	202072	26	12	200714A	27	23	200723A						
〃	〃	綿 糸 Soft (Spool)	〃	〃	〃	〃	13	200948	〃	〃	〃						
〃	〃	カタン糸又ハウリー糸 (2本糸) Cotton or Woolly yarn (2-thread machine)	〃	〃	〃	〃	14	200952	〃	〃	〃						
DC-MS205	0.5mm×3mm	綿 糸 Soft (Spool)	26	3	202090	26	15	202123	27	23	200723A						
DC-MS250	5mm×3mm	綿 糸 Soft (Spool)	26	4	202091	26	16	202085	27	23	200723A						
DC-MS230D	3mm×3mm	カタン糸又ハウリー糸 Cotton or Woolly yarn	26	5	202129	26	17	202108				27	24	202109A	27	25	202110A
〃	〃	綿 糸 (2本糸) Soft (Spool) (2-thread machine)	〃	〃	〃	〃	18	200951				〃	〃	〃	〃	〃	〃
DC-MS220D	2mm×3mm	カタン糸又ハウリー糸 Cotton or Woolly yarn	26	6	202128	26	19	202107				27	24	202109A	27	25	202110A
〃	〃	綿 糸 (2本糸) Soft (Spool) (2-thread machine)	〃	〃	〃	〃	20	200950				〃	〃	〃	〃	〃	〃
DC-MS205D	0.5mm×3mm	綿 糸 Soft (Spool)	26	7	202127	26	21	202116				27	24	202109A	27	25	202110A
DC-MS250D	5mm×3mm	綿 糸 Soft (Spool)	26	8	202130	26	22	202122				27	24	202109A	27	25	202110A

## IN ORDERING ORGANIZATION PARTS

This List contains the Organization Parts for each machine model and gauge (needle gauge x overlock seam width), and enables you to know necessary parts for repairs or converting your machine to another model or gauge. And the models in BLOCK type are the standard machines of DC-MS series.

All presser foot (complete) shown on this List consist of a PRESSER FOOT BODY with each needle gauge (List I) and the common parts to all models of DC-MS series (List II).

### — List I —

**PRESSER FOOT BODY PRESSER FOOT (COMPLETE)**  
Parts No.200733 .. for Parts No.200731 of model DC-MS230 & 230D.  
No.200732 .. for No.200730 of model DC-MS220 & 220D.

**PRESSER FOOT BODY PRESSER FOOT (COMPLETE)**  
Parts No.202121 .. for No.202120 of model DC-MS205 & 205D.  
No.202101 .. for No.202086 of model DC-MS250 & 250D.

### — List II —

#### THE COMMON PARTS TO ALL MODELS

Parts No.200796 (Presser foot body pin)  
No.200734 (Presser foot body bracket)  
No.200735A (Presser foot chaining-off finger)

Parts No.1231 (Presser foot chaining-off finger screw)  
No.200729A (Presser foot spring)  
No.1229 (Presser foot spring screw)

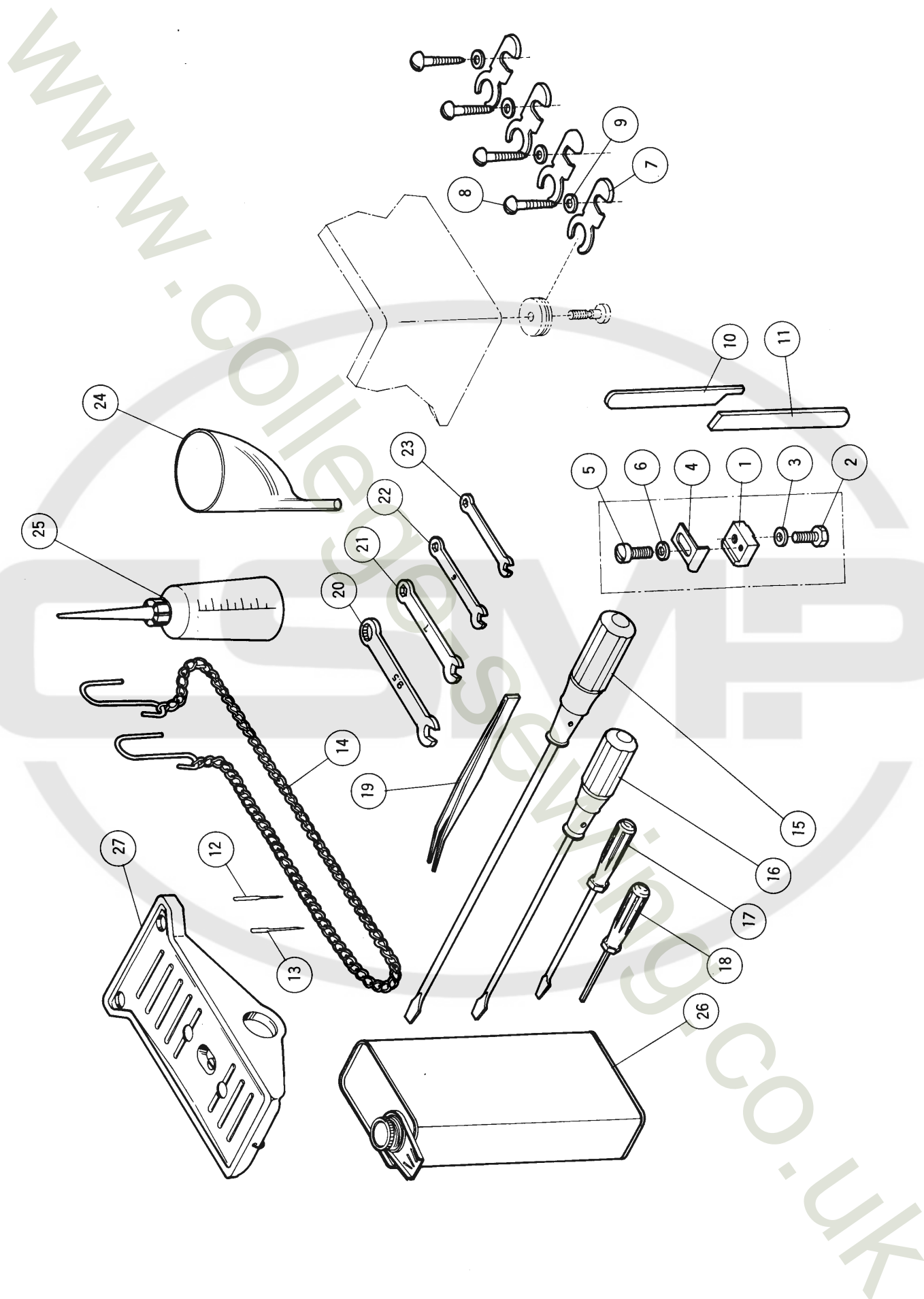
All needle bars (complete) in this List consist of NEEDLE BAR (No.141122), 2 pieces NEEDLE CLAMP SCREWS (No.5292) and the following NEEDLE CLAMP with each needle gauge.

#### NEEDLE CLAMP

Parts No.200713 .. for No.200711 of model DC-MS230 & 230D.  
No.200712 .. for No.200710 of model DC-MS220 & 220D.

Parts No.202118 .. for No.202119 of model DC-MS205 & 205D.  
No.202084 .. for No.202100 of model DC-MS250 & 250D.

Page	Ref. No.	Needle bar (complete)	Page	Ref. No.	Right looper	Page	Ref. No.	Left looper	Page	Ref. No.	Double chain-stitch looper	Page	Ref. No.	Presser foot (complete)	Page	Ref. No.	Upper knife	Page	Ref. No.	Lower knife
頁	参照番号	針棒(組)	頁	参照番号	大ルーバー	頁	参照番号	小ルーバー	頁	参照番号	二重環ルーバー	頁	参照番号	押エ(組)	頁	参照番号	上メス	頁	参照番号	下メス
27	26	200711	27	30	137301	27	33	137302	27	34	200785	27	36	200731	27	40	138559	27	41	137562
〃	〃	〃	〃	〃	〃	〃	〃	〃	〃	〃	〃	〃	〃	〃	〃	〃	〃	〃	〃	〃
〃	〃	〃	27	32	139301	〃	〃	〃	〃	〃	〃	〃	〃	〃	〃	〃	〃	〃	〃	〃
27	27	200710	27	30	137301	27	33	137302	27	34	200785	27	37	200730	27	40	138559	27	41	137562
〃	〃	〃	〃	〃	〃	〃	〃	〃	〃	〃	〃	〃	〃	〃	〃	〃	〃	〃	〃	〃
〃	〃	〃	27	32	139301	〃	〃	〃	〃	〃	〃	〃	〃	〃	〃	〃	〃	〃	〃	〃
27	28	202119	27	30	137301	27	33	137302	27	35	202133	27	38	202120	27	40	138559	27	41	137562
27	29	202100	27	31	200340	27	33	137302	27	34	200785	27	39	202086	27	40	138559	27	41	137562
27	26	200711	27	30	137301	27	33	137302	27	34	200785	27	36	200731	27	40	138559	27	41	137562
〃	〃	〃	27	32	139301	〃	〃	〃	〃	〃	〃	〃	〃	〃	〃	〃	〃	〃	〃	〃
27	27	200710	27	30	137301	27	33	137302	27	34	200785	27	37	200730	27	40	138559	27	41	137562
〃	〃	〃	27	32	139301	〃	〃	〃	〃	〃	〃	〃	〃	〃	〃	〃	〃	〃	〃	〃
27	28	202119	27	30	137301	27	33	137302	27	35	202133	27	38	202120	27	40	138559	27	41	137562
27	29	202100	27	31	200340	27	33	137302	27	34	200785	27	39	202086	27	40	138559	27	41	137562





## ACCESSORIES

## 付 属 品

Ref. No. 参照番号	Parts No. 部品番号	Name	名 称	Qt. 数量
	200472	Cloth guide, complete with 138905, 2193, 137142, 200668, 1202 & 137906	定規台(組)138905, 2193, 137142, 200668, 1202, 137906ノ組	1
1	138905	" guide bracket	〃	1
2	2193	" " screw	〃 止ネジ	1
3	134142	" " " washer	〃 〃 座金	1
4	200668	" guide	定規	1
5	1202	" " " screw	〃 止ネジ	1
6	137906	" " " washer	〃 〃 座金	1
7	202014A	Oil pan set hook	オイルパン足金	4
8	5019	" " " " wood screw	〃 据付用木ネジ	4
9	137142	" " " " " " washer	〃 〃 座金	4
10	138559	Upper knife (for exports only)	上メス(貿易用)	1
11	137562	Lower knife ( " " " )	下メス( 〃 )	1
12	DC×1	Needle	針	10
13	DM×13	Needle	〃	10
14	126	Treadle chain	鎖	1
15	127	Screw driver (large)	ドライバー(大)	1
16	128	" " (medium)	〃 (中)	1
17	129	" " (small)	〃 (小)	1
18	179	Allen wrench	ソケットスクリュー用ドライバー	1
19	131	Tweezers	ピンセット	1
20	130A-9.5	Wrench (9.5mm)	スパナ 9.5mm	1
21	130A-7	" (7.0mm)	〃 7 mm	1
22	130A-6	" (6.0mm)	〃 6 mm	1
23	130A-4	" (4.0mm)	〃 4 mm	1
24	135A	Oil funnel	ジョウゴ	1
25	132	Oiler	油差シ	1
26	133	Oil container (500cc)	油缶 (500cc入)	1
27	121	Treadle, complete	靴(組)	1

# NUMERICAL INDEX OF PARTS

## 部 品 番 号 索 引

Parts No.	Page	Ref. No.	Parts No.	Page	Ref. No.	Parts No.	Page	Ref. No.	Parts No.	Page	Ref. No.	Parts No.	Page	Ref. No.
部品番号	頁	参照番号	部品番号	頁	参照番号	部品番号	頁	参照番号	部品番号	頁	参照番号	部品番号	頁	参照番号
70-1	5	27	1234	21	3	3044	7	29	101111	5	45	139301	29	32
121	31	27	1281	23	2	3044	11	38	101111	7	35	140402	13	14
126	31	14	1326	21	23	3044	15	10	101111	7	42	141105A	5	49
127	31	15	1326	23	14	3044	15	19	101111	11	35	141122	5	
128	31	16	1419	25	27	3044	21		101113	7	33	141122	28	
129	31	17	1435	11	30	3056	7	32	101113	7	40	141122	29	
130A-9.5	31	20	1457	5	11	3056	7	39	134142	31	3	167072	11	36
130A-7	31	21	1457	5	13	3056	11	33	137008	21	2	167077	11	34
130A-6	31	22	1457	5	36	3091	9	28	137011	21	7	192070	5	26
130A-4	31	23	1457	11	25	3091	23	15	137101	5	29	193174	21	22
131	31	19	1457	17	10	3092	9	29	137104	7	30	200033	5	1
132	31	25	1457-1	9	47	3144	21	5	137106	7	38	200034	5	
133	31	26	1457-1	11	17	4009-1	3	21	137114	7	41	200037	5	10
135A	31	24	1457-1	25	31	4009-1	19	2	137115	7	34	200083	25	26
179	31	18	1458	15	8	4009-1	21	25	137121	7	5	200084	25	28
1132	15	33	1459	17	13	4009-1	23	9	137123	5	35	200085	25	
1156	9	11	1732	5	38	5001	13	9	137130	5	3	200089	25	6
1156	13	11	1817-2A	5	46	5002	11	2	137130	7	3	200097	25	9
1170	9	3	1817-2A	7	36	5002	11	9	137140	15	1	200098	25	13
1170-3	5	21	1817-2A	7	43	5002	13	2	137141	15	4	200099	25	10
1170-3	25		1936	3		5003	13	3	137142	7	37	200109	25	28
1170-3	25	27	2022	5	15	5010	5	4	137142	7	44	200119	17	2
1174	9	20	2022	9	8	5010	7	4	137142	13	8	200120	17	3
1174	9	23	2022	9	16	5012	21	21	137142	15	13	200134A	19	8
1174	15	22	2022-3	3	14	5019	31	8	137142	21	26	200136	19	3
1174	25	25	2022-3	7	21	5023	23	19	137142	27	9	200136	19	14
1175-2	13	22	2022-3	13	13	5025	21	13	137143	15	6	200136	19	15
1175-2	21	15	2022-4	5	8	5025	21	32	137145A	15	15	200137	19	4
1175-2	21	27	2022-4	7	6	5051	3	24	137146	15	14	200137	19	12
1175-2	25	19	2022-4	7	11	5052	3	25	137147	15	20	200138	19	5
1175-2	25	21	2022-4	9	13	5053	7	23	137301	7	12	200162	21	16
1175-3	11	28	2133	15	18	5053	13	20	137301	29	30	200168	21	10
1186	5	25	2133-1	15	27	5056	15	7	137302	7	22	200168	23	13
1186	11	6	2193	31	2	5058	3	9	137302	29	33	200169	21	12
1186	13	6	2213	15	3	5060	17	7	137307A	7	14	200170	21	
1196	5	23	2213	15	16	5061	5	39	137409	7	10	200172	21	14
1196	7	13	2213-1	5	2	5064	9	31	137409	13	12	200174	21	18
1196	7	25	2213-1	7	2	5064	9	39	137417	13	15	200174	23	21
1196	11	21	2213-1	9	2	5064	19	23	137419	13	7	200184	21	29
1196	23	11	2237	11	19	5064	19	26	137442	13	17	200186	21	
1202	5	41	2237	13	18	5065	15	41	137442-1	13	19	200187A	23	7
1202	9	33	2285	15	17	5069	15	45	137552	15	2	200204	11	37
1202	9	35	2308	15	12	5070	15	42	137552	15	26	200211	3	6
1202	9	45	2308	25	12	5113	19	20	137553	15	38	200260	21	34
1202	23	6	2366-2	15	23	5132	3	3	137554	15	36	200265	5	7
1202	31	5	2368	3	16	5133	3	4	137558	15	35	200308	25	
1216	5	30	2370	15	9	5134	17	5	137560	15	34	200311	25	14
1216	7	31	2371	15	5	5136	23	22	137562	15	43	200312	25	15
1216	9	6	2419	21	4	5136	23	24	137562	29	41	200314	25	17
1216	21	11	2905	21	19	5136	25	23	137562	31	11	200315A	25	16
1216	21	30	2905	23	17	5138B	17	20	137563	15	44	200316	25	8
1216	23	4	2913-1	3	10	5170	25	30	137906	31	6	200322	13	10
1222	5	19	2918	11	3	5224	15	31	137950	3		200340	29	31
1222	15	37	2921	25	33	5229	28		138555A	15	29	200389	3	12
1229	28		2922	7	16	5229	29		138555-1	15	30	200389	5	9
1229	29		2924	19	29	5259	15	39	138556	15	32	200396	9	22
1231	28		3001	25	11	5292	5	32	138559	15	28	200398	9	26
1231	29		3018	9	25	5292	9	37	138559	29	40	200400	9	24
1234	5	6	3018	15	24	5293	17	15	138559	31	10	200401	9	21
1234	9	42	3044	5	48	9070-2	5	28	138905	31	1	200472	31	

Parts No. Page Ref. No.	Parts No. Page Ref. No.	Parts No. Page Ref. No.	Parts No. Page Ref. No.	Parts No. Page Ref. No.
部品番号 頁 参照番号	部品番号 頁 参照番号	部品番号 頁 参照番号	部品番号 頁 参照番号	部品番号 頁 参照番号
200502 25 4	200725A 15 25	200795A 9 43	202079 19 28	202176 7 19
200503 13 1	200726 15 40	200796 28	202081 9 4	202176 9 17
200531 5 22	200729A 28	200796 29	202082B 21 8	202176 11 12
200534 5 5	200729A 29	200798B 9 41	202083A 9 5	202176 11 23
200605 3	200730 28	200799B 9 36	202084 28	202176 11 31
200607 3 11	200730 29	200947 7 15	202084 29	202176 13 24
200618 7 1	200730 29 37	200948 28 13	202085 28 16	202176 19 21
200620 7 8	200731 15 11	200949 28 10	202086 28	202176 19 24
200621A 7 26	200731 28	200950 28 20	202086 29	202176 19 27
200622A 7 27	200731 29	200951 28 18	202086 29 39	202176 25 36
200623A 7 28	200731 29 36	200952 28 14	202087A 17 21	202177 5 18
200624 7 17	200732 28	200953 28 11	202087A 23 5	202179 7 20
200625 7 18	200732 29	201035A 5 42	202088 13 16	202182 25
200627 13 23	200733 28	201037 5 43	202090 28 3	202183 25 5
200628 13	200733 29	201039 5 44	202091 28 4	202199 19 6
200629 13	200734 28	201139 17 9	202100 28	202278 5 47
200631 15 21	200734 29	202001 3	202100 29	202757 11 22
200632 11 24	200735 28	202006 3 15	202100 29 29	202903 19 18
200632 19 19	200735 29	202007 3 23	202101 28	202903 25 7
200633 3 17	200737 11 5	202008 23 8	202101 29	DC×1 5 33
200640A 21 9	200737 13 5	202010 5 12	202104 25	DC×1 31 12
200641 21 24	200741 11 15	202012 17 1	202105 25 2	DM×13 5 34
200652 5 14	200742 9 18	202013 17 4	202106 25 3	DM×13 31 13
200653 5 16	200742 11 13	202014A 31 7	202107 28 19	
200654 5 17	200742 11 32	202015 17 6	202108 28 17	
200655 5 20	200743 21 1	202016 17 8	202109A 25 18	
200664 3 22	200744 21	202017 17 11	202109A 28 24	
200668 31 4	200745 21	202019 3 26	202110A 25 20	
200670A 23 12	200746 21 28	202021 17 17	202111 25 24	
200671 23 16	200747 21	202022A 17 18	202112 25 22	
200672 23 18	200748 21	202023 17 19	202113 25 35	
200673 23 23	200749 21 31	202024 3 18	202114 25	
200697 21 17	200750 21 33	202025 3 19	202115 25 32	
200697 23 20	200751 23 1	202026 3 20	202116 28 21	
200698 19 10	200752 23 3	202027 19 1	202118 28	
200699 19 9	200756 9 7	202028 19 7	202118 29	
200703 3 8	200757 9 9	202032 19 11	202119 28	
200707 3 13	200758 9 10	202033 19 13	202119 29	
200709 5 24	200759 9 12	202034 19 16	202119 29 28	
200710 28	200760 9 14	202035A 19 17	202120 28	
200710 29	200761 9 15	202040 19 25	202120 29	
200710 29 27	200767 9 27	202044A 17 22	202120 29 38	
200711 5 31	200768 11 1	202046 3 2	202121 28	
200711 28	200770 11 7	202047 11 4	202121 29	
200711 29	200771 11 8	202047 13 4	202122 28 22	
200711 29 26	200772 11 10	202048 17 12	202123 28 15	
200712 28	200773 11 11	202049A 17 14	202127 28 7	
200712 29	200773 11 14	202050 23 10	202128 28 6	
200713 5	200775 11 16	202051 3 5	202129 28 5	
200713 28	200776 11 18	202058 17	202130 28 8	
200713 29	200777 11 20	202066 17 16	202131 25 1	
200714A 28 12	200779 11 26	202070 3 1	202132 25 29	
200715A 5 37	200780 11 27	202071 3	202133 29 35	
200715A 28 9	200781 11 29	202072 28 2	202134 25 34	
200716 5 40	200782 9 30	202073 21 6	202135 7 7	
200717 7 24	200783A 21 20	202073 28 1	202136 9 34	
200718 7 45	200785 9 32	202074 3 7	202137 9 40	
200719 9 46	200785 29 34	202075A 3	202138 9 19	
200723A 13 21	200787A 9 38	202076 9	202175 19 30	
200723A 28 23	200793 9 44	202077A 9 1	202176 7 9	

