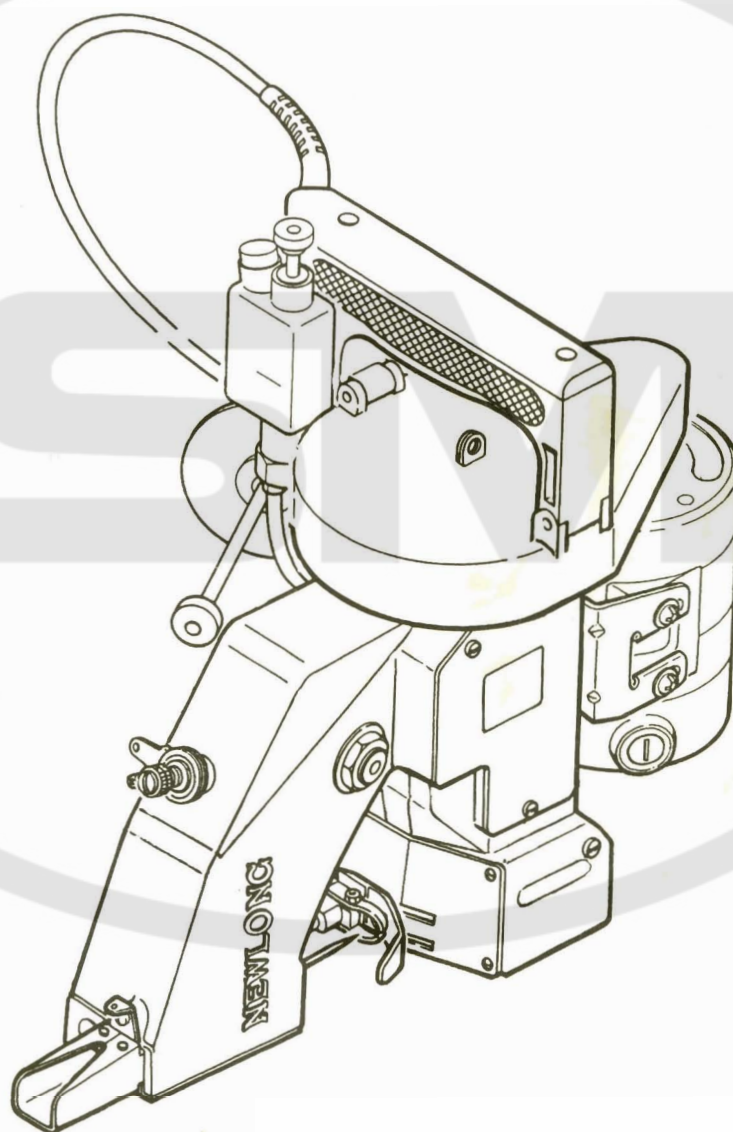


NEWLONG

MODEL **NP-7A**
(NP-7H)

PORTABLE FILLED BAG CLOSING MACHINE

INSTRUCTION MANUAL/PARTS LIST

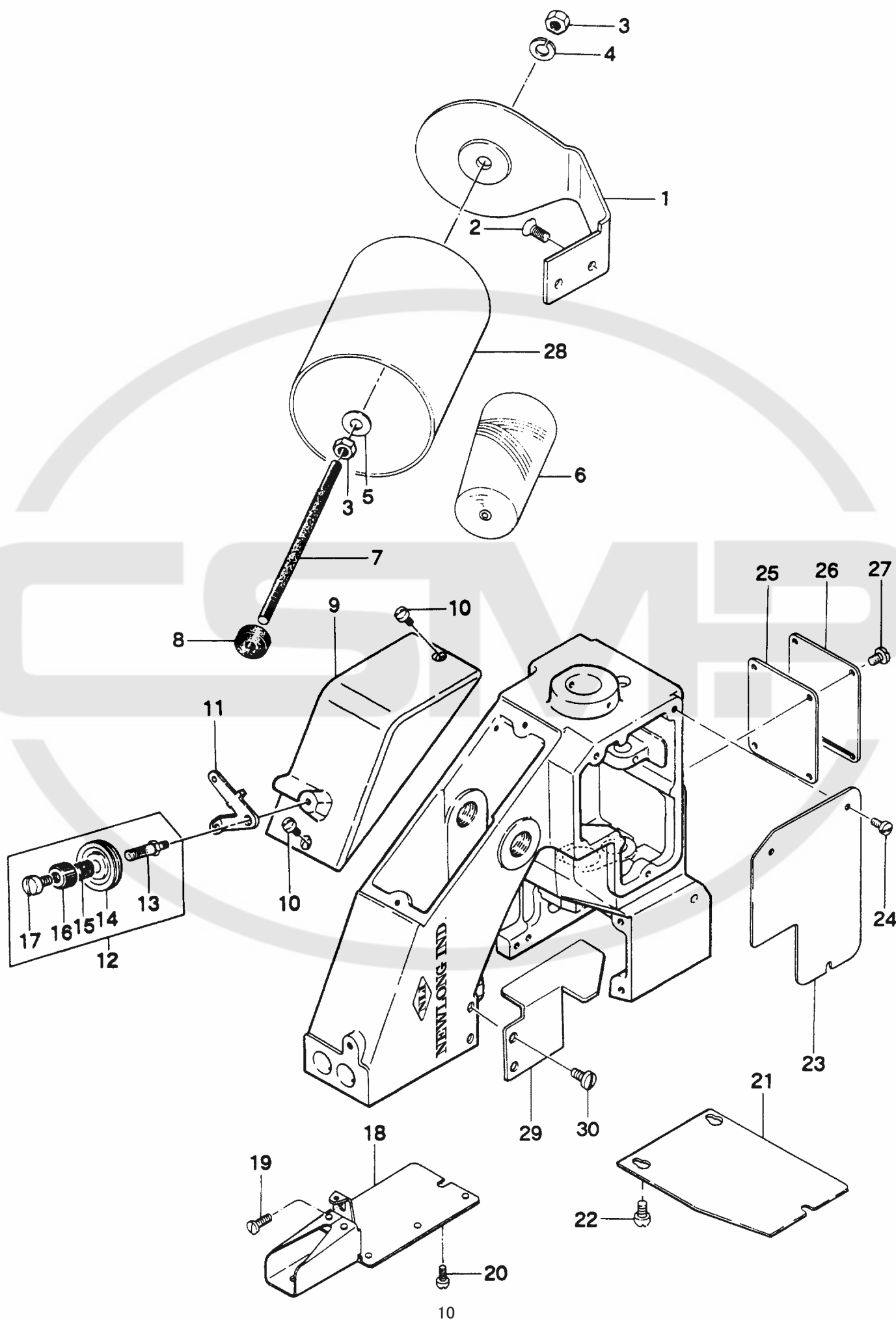


ニューロング株式会社

NEWLONG MACHINE WORKS, LTD.

No.35

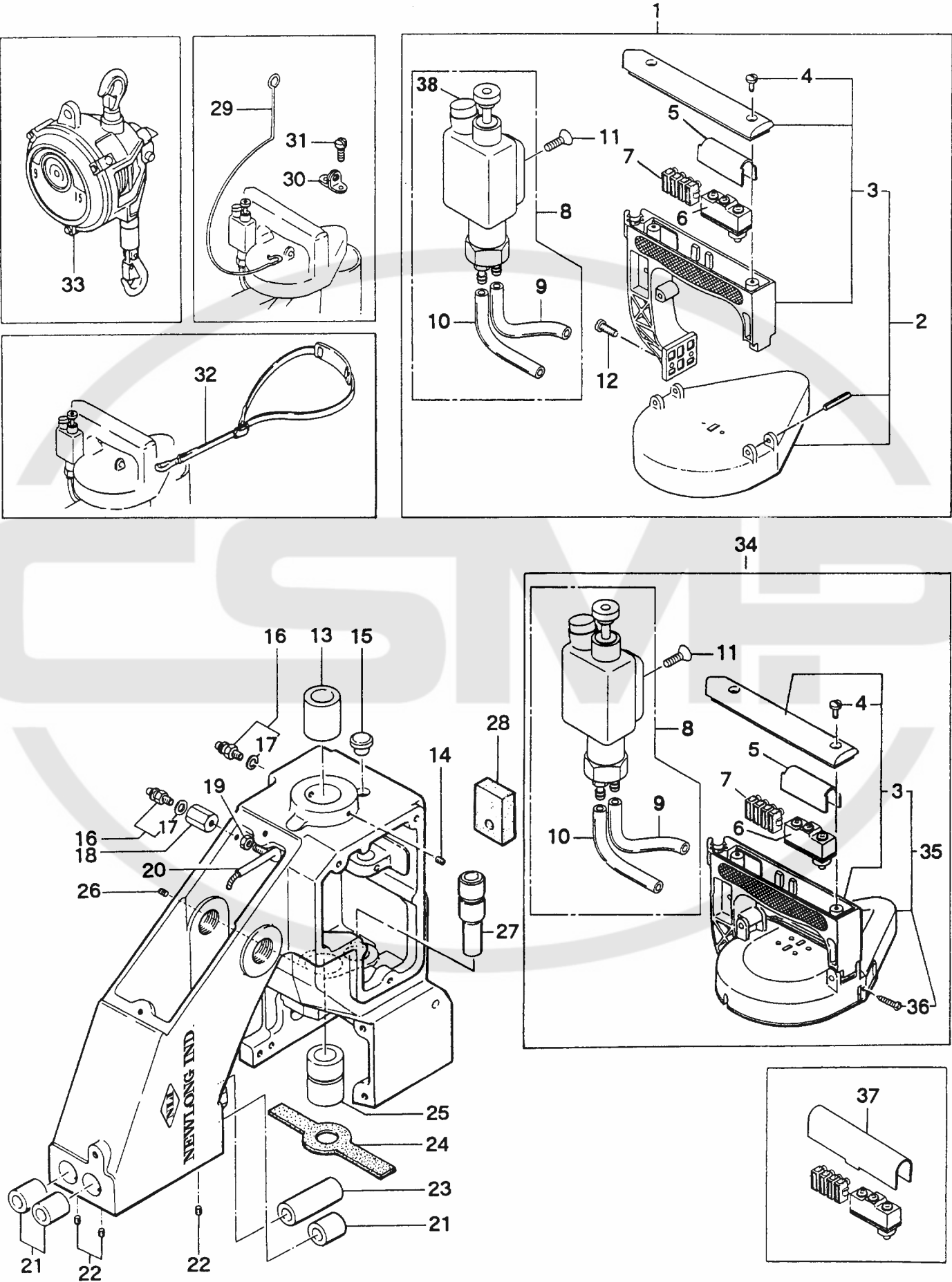
(1) THREAD TENSION AND COVER PARTS



(1) THREAD TENSION AND COVER PARTS

Ref. No.	Part No.	Description	Q' ty	Remarks
1	245042	Thread Stand	1	
2	15/64S28028	Screw, for 245042	2	
3	1N6	Nut	2	
4	3W6	Spring Washer	1	
5	2W6	Washer	1	
6	K01001	Thread	1	
7	245052	Thread Cone Clamping Rod	1	
8	245201	Thread Cone Clamping Nut	1	
9	245014	Top Cover	1	
10	9/64S40005	Screw, for 245014	2	
11	245551	Thread Eyelet	1	
12	245081C	Thread Tension Assembly	1	(13~17)
13	245081	Tension Post	1	
14	065261	Tension Disc	2	
15	245101	Tension Spring	1	
16	245092	Tension Nut	1	
17	9/64S40005	Screw, for 245081C	1	
18	245033	Needle Bar Guard	1	
19	11/64S40005	Screw, for 245033	1	
20	9/64S40065	Screw, for 245033	2	
21	245222	Looper Cover	1	
22	9/64S40065	Screw, for 245222	3	
23	245022	Side Plate	1	
24	9/64S40005	Screw for 245022	3	
25	245481	Gasket	1	
26	245302	Inside Cover	1	
27	9/64S40005	Screw, for 245302	4	
28	245181	Thread Cone Cover	(1)	Special Order
29	245571	Guard	(1)	Special Order
30	9/64S40005	Screw, for 245571	(2)	

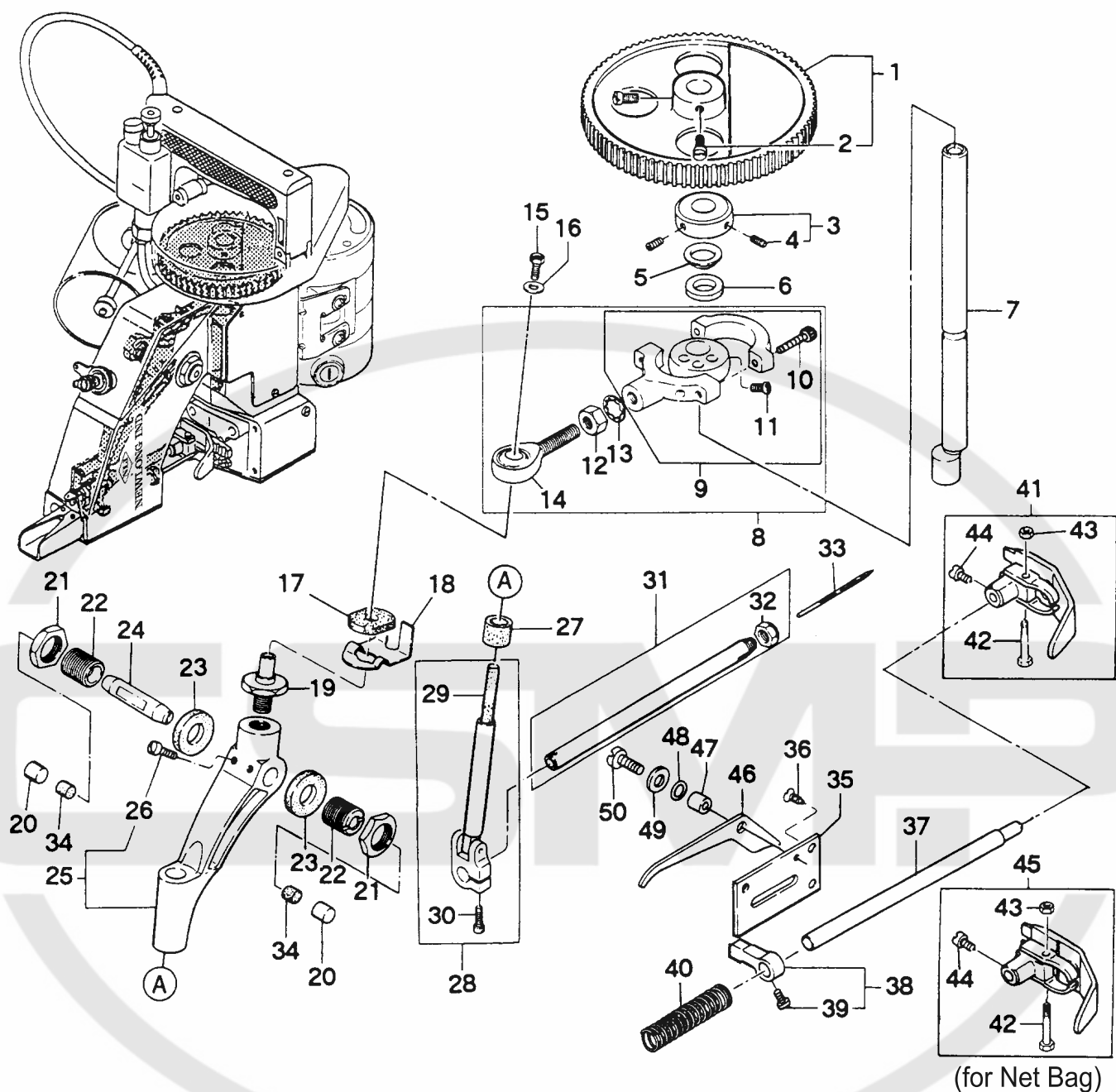
(2) BUSHING, OILING AND HANDLE PARTS



(2) BUSHING OILING AND HANDLE PARTS

Ref. No.	Part No.	Description	Q' ty	Remarks
1	241024AS	Handle Assembly	1	2,5~11
2	241024A	Handle Assembly	1	(3,4)
3	241024	Handle	1	(4)
4	9/64S40011	Screw, for 241024A	2	
5	245132	Micro Switch Cover	1	
6	C02001	Micro Switch (Z-15GK655-B)	1	
	C02006	Micro Switch (X-10GD-B)	1	for DC motor
7	C05008	Flexible Terminal Block (ML-SK-1,4P)	1	
8	D03003	Oiler	1	(9,10)
9	8FU2-6 × 90F	Oil Tube, with oil felt	1	
10	8FU2-6 × 60F	Oil Tube, with oil felt	1	
11	6S5 × 15	Screw, for D03003	1	
12	15/64S28021	Screw, for 241024A	2	
13	241122	Main Shaft Bushing, rear	1	
14	9/64S40502	Screw, for 241122	1	
15	065401	Rubber Bushing	1	
16	D07021	Joint (BN-5-9)	2	(17)
17	E03014	Washer	2	
18	245471	Joint	1	
19	1N4	Nut	1	
20	245461	Oil Pipe	1	
21	242212	Bushing for Presser Bar & Needle Bar, upper	3	
22	9/64S40504	Screw, for 242212	3	
23	242222	Presser Bar Bushing, lower	1	
24	245541	Oil Felt	1	
25	241111	Main Shaft Bushing, lower	1	
26	9/64S40502	Screw, for 241111	1	
27	243021	Looper Rocker Shaft Bushing	1	
28	245162	Oil Felt	1	
29	245271	Hanger	(1)	Special Order
30	241151	Hook	(1)	
31	1/8S40006	Screw, for 241151	(2)	
32	245171	Shoulder Belt	(1)	
33	MW-6. 5	Spring Balancer	(1)	
34	241024BS	Handle Assembly (Safety type with pulley cover)	(1)	5~11,35
35	241024B	Handle Assembly (Safety type with pulley cover)	(1)	(3,4,36)
36	9S2.6 × 10	Screw, for 241024B	(1)	
37	245133	Micro Switch Cover	(1)	for Canada
38	255351	Rubber Bushing	(1)	

(3) NEEDLE BAR, PRESSER BAR AND DRIVING PARTS

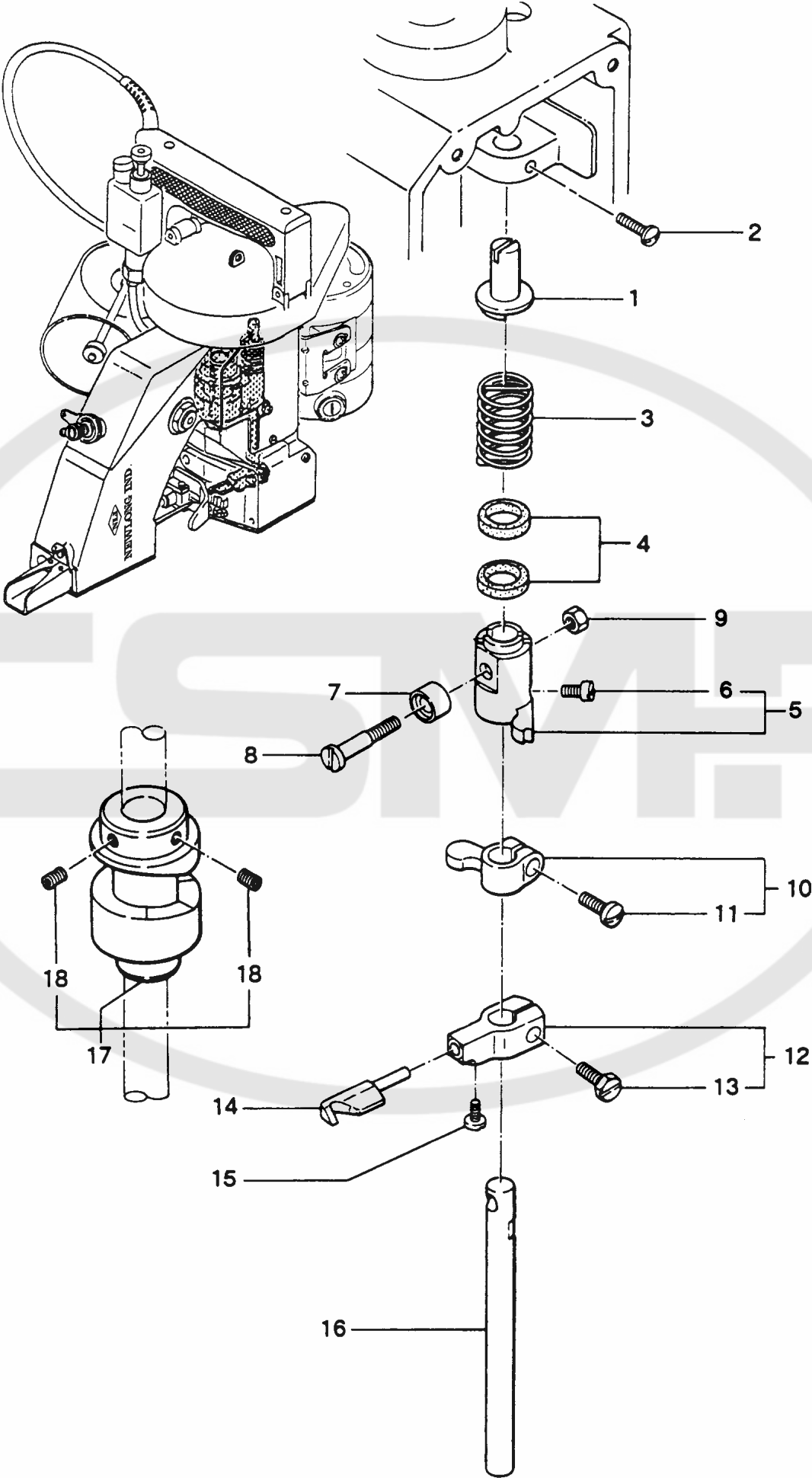


Ref. No.	Part No.	Description	Q' ty	Remarks
1	241092	Synchro Pulley	1	(2)
2	3/16S28001	Screw, for 241092	2	
3	241131	Retaining Collar	1	(4)
4	11/64S40502	Screw, for 241131	2	
5	241161	Spacer	1	
6	205131	Oil Felt	1	
7	241102	Main Shaft	1	
8	242011A	Connecting Rod Assembly	1	(9~14)
9	242011	Connecting Rod Sub- Assembly	1	(10,11)
10	4B5×15	Screw, for connecting rod cap	2	
11	11/64S40001	Screw, for eccentric cam	2	
12	1N8	Nut, for 242011A	1	

(3) NEEDLE BAR, PRESSER BAR AND DRIVING PARTS

Ref. No.	Part No.	Description	Q' ty	Remarks
13	5W8	Washer, for 242011A	1	
14	6A04001	Rod End (POS-8)	1	
15	11/64S40084	Screw, for 242031	1	
16	11/64W15103	Washer, for 242031	1	
17	245211	Oil Felt	1	
18	242041	Spring	1	
19	242031	Rod End Stud	1	
20	245491	Cap	2	
21	5/8N18101	Nut, for 242081	2	
22	242081	Adjusting Stud	2	
23	245231	Oil Felt	2	
24	242071	Needle Bar Lever Stud	1	
25	242051A	Needle Bar Lever Assembly	1	(26)
26	11/64S40004	Screw, for 242051A	2	
27	245371	Oil Felt	1	
28	242101A	Needle Bar Connection Assembly	1	(29,30)
29	205171	Oil Felt	1	
30	11/64S40003	Screw, for 242101A	1	
31	242121A	Needle Bar with Nut	1	(32)
32	242131	Needle Clamp Nut	1	
33	B01002	Needle (DN×1#25)	1	
34	065561	Oil Felt	2	
35	242172	Presser Foot Lifter Base	1	
36	11/64S40002	Screw, for 242172	3	
37	242201	Presser Bar	1	
38	242181	Presser Bar Connection	1	(39)
39	11/64S40003	Screw, for 242181	1	
40	242191	Presser Spring	1	
41	242231A	Presser Foot Assembly	1	(42~44)
42	9/64S40055	Screw	1	
43	9/64N40101	Nut	1	
44	11/64S40005	Screw, for 242231A, 242233A	1	
45	242233A	Presser Foot Assembly (for Net Bag)	(1)	(42~44)
46	242161	Presser Foot Lifter	(1)	Special Order For Presser Bar Lifter
47	242271	Collar	(1)	
48	31LP6	“O” Ring	(1)	
49	11/64W15103	Washer	(1)	
50	11/64S40009	Screw, for 242161	(1)	

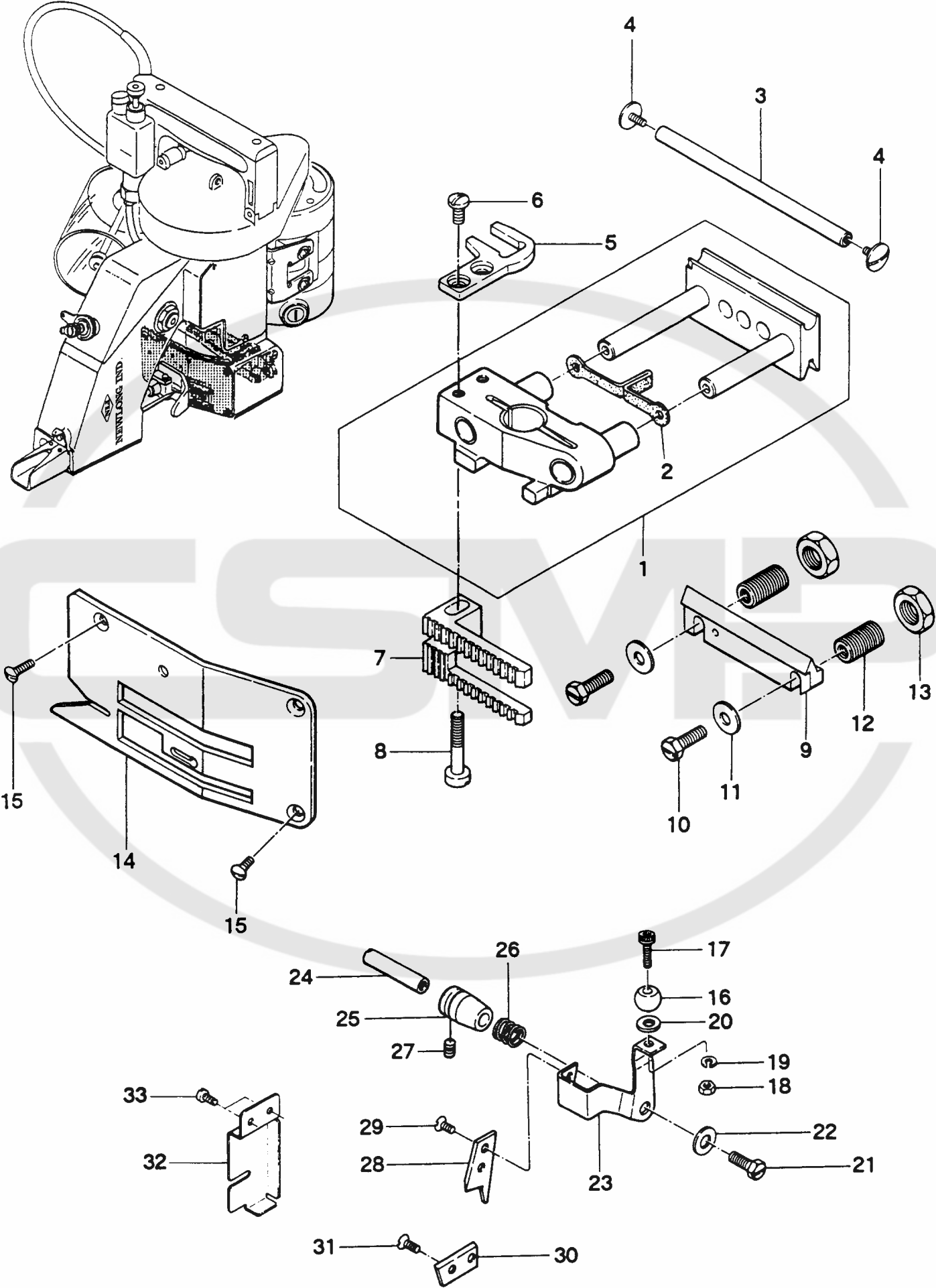
(4) LOOPER DRIVING PARTS



(4) LOOPER DRIVING PARTS

Ref. No.	Part No.	Description	Q' ty	Remarks
1	243121	Spring Supporter	1	
2	11/64S40003	Screw, for 243121	1	
3	243131	Spring	1	
4	205131	Oil Felt	2	
5	243071	Looper Rocker Shaft Arm (A)	1	(6)
6	11/64S40002	Screw, for 243071	1	
7	243041	Roller	1	
8	243061	Roller Stud Screw	1	
9	11/64N40201	Nut, for 243061	1	
10	243081	Looper Rocker Shaft Arm (B)	1	(11)
11	11/64S40009	Screw, for 243081	1	
12	243092	Looper Rocker	1	(13)
13	11/64S40089	Screw, for 243092	1	
14	243102	Looper	1	
15	9/64S40001	Screw, for 243102	1	
16	243032	Looper Rocker Shaft	1	
17	243012	Looper Drive Cam	1	(18)
18	15/64S28524	Screw, for 243012	2	

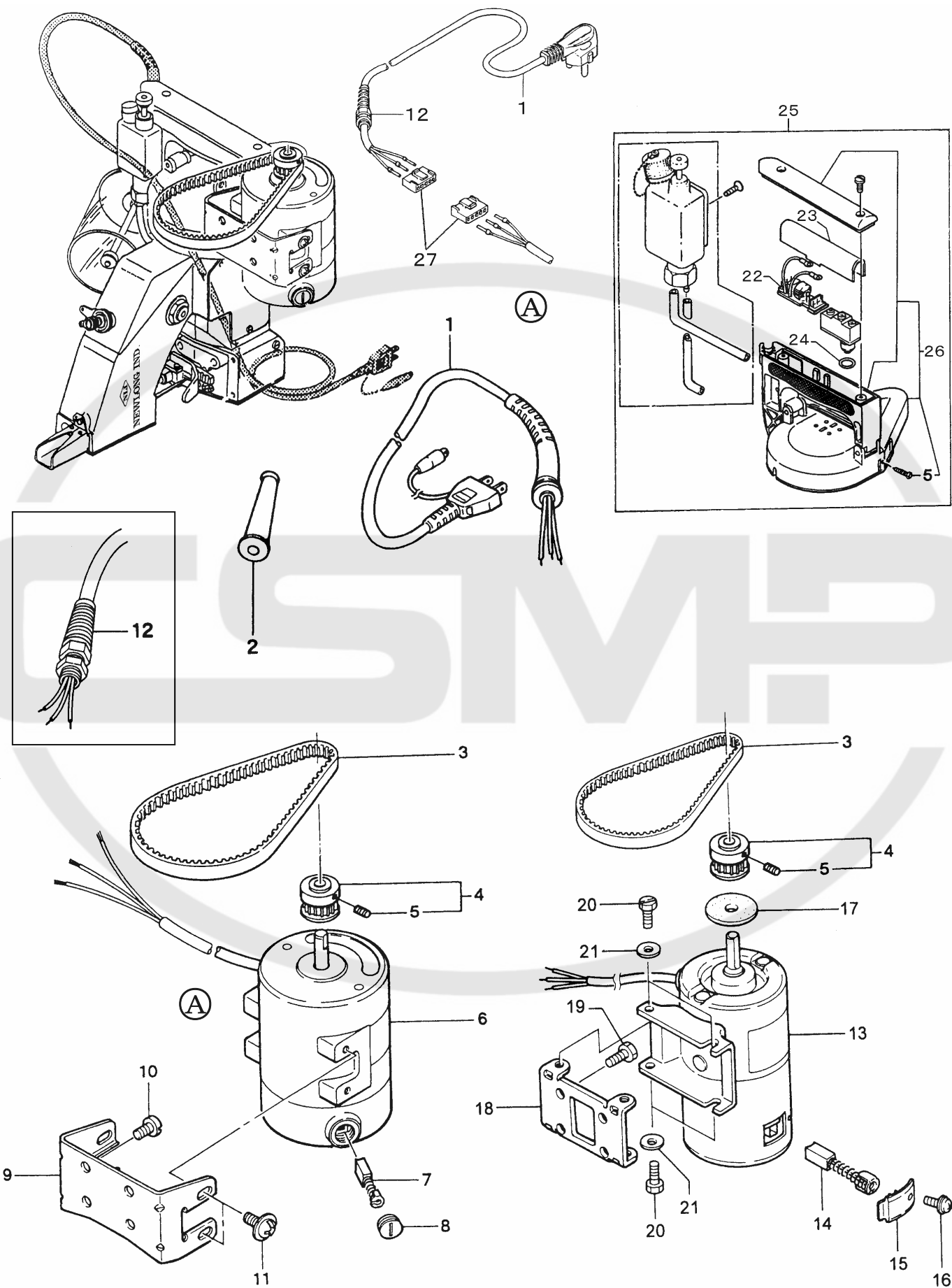
(5) FEED DRIVING AND THREAD CUTTER PARTS



(5) FEED DRIVING AND THREAD CUTTER PARTS

Ref. No.	Part No.	Description	Q' ty	Remarks
1	244011A	Feed Dog Carrier Block Assembly	1	(2)
2	245391	Oil Felt	1	
3	244102	Slide Block Guide Stud	1	
4	9/64S40011	Screw, for 244102	2	
5	246011	Knife Bracket Extension	1	
6	3/16S32031	Screw, for 246011	2	
7	244111	Feed Dog	1	
8	3/16S32034	Screw, for 244111	1	
9	244081	Slide Block Adjusting	1	
10	3/16S32025	Lock Bolt, for 244091	2	
11	11/64W15103	Washer, for 244091	2	
12	244091	Stud Slide Block Adjusting Support	2	
13	3/8N24201	Lock Nut, for 244091	2	
14	244122	Throat Plate	1	
15	9/64S40043	Screw, for 244122	3	
16	246081	Ball	1	
17	4B3×12	Bolt, for 246081 (M3×0.5×12ℓ)	1	
18	1N3	Nut, for 246081 (M3×0.5)	1	
19	3W3	Spring Lock Washer (M3)	1	
20	1W3	Washer, for 246081 (M3)	1	
21	11/64S40049	Screw, for 246021	1	
22	11/64W15103	Washer, for 246021	1	
23	246021	Knife Bracket	1	
24	246032	Knife Bracket Pin	1	
25	246042	Bushing, for 246032	1	
26	246051	Knife Tension Spring	1	
27	9/64S40502	Screw, for 246042	1	
28	246061	Knife Moving	1	
29	1/8S40003	Screw, for 246061	2	
30	246071	Knife Stationary	1	
31	1/8S40003	Screw, for 246071	2	
32	245561	Knife Cover	1] Special Order
33	1/8S40006	Screw, for 245561	2	

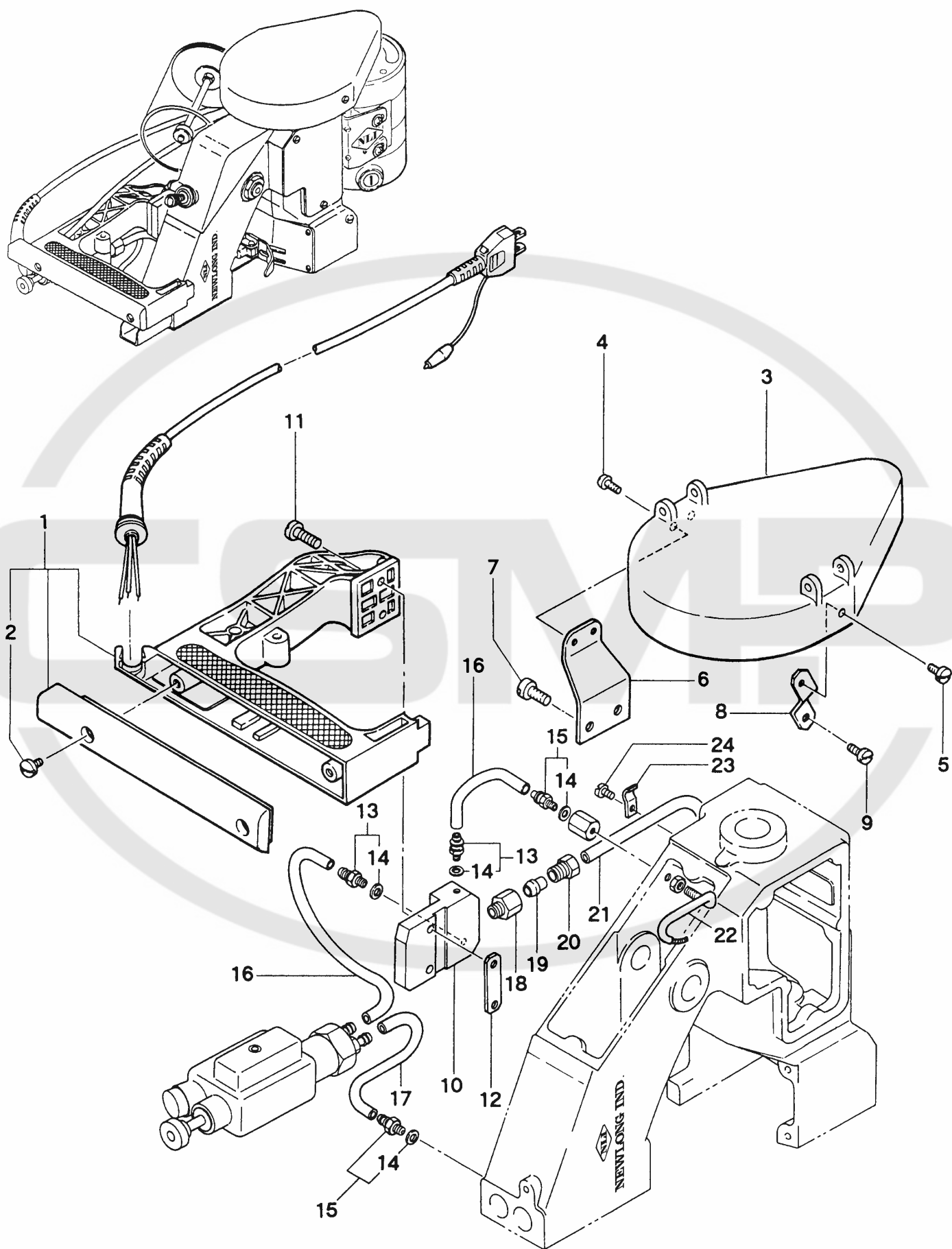
(6) MOTOR PARTS (For Totally Enclosed Type Motor)



(6) MOTOR PARTS (For Totally Enclosed Type Motor)

Ref. No.	Part No.	Description	Q' ty	Remarks
1	C04001	Cabtyer Cord, with Plug (Standard Type)	1	
	C04003	Cabtyer Cord, with Plug (American Type)	1	
	C04004	Cabtyer Cord, with Plug (British Type)	1	
	C04005	Cabtyer Cord, with Plug (German Type)	1	
	C04006	Cabtyer Cord, with Plug (French Type)	1	
	C04007	Cabtyer Cord, with Plug (Australian Type)	1	
	C04009	Cabtyer Cord, with Plug (for DC Motor)	1	
	C04010	Cabtyer Cord, with Plug (British Type)	1	CE
	C04011	Cabtyer Cord, with Plug (German Type)	1	CE
2	211151	Rubber Bushing (for C04003-C04007)	(1)	
3	F01001	Timing Belt	1	
4	241083	Motor Pulley	1	(5)
5	11/64S40504	Screw, for 241083	2	
6	C01021	Universal Motor (220V)	1	(7,8) (CE)
	C01022	Universal Motor (230V~240V)	1	(7,8) (CE)
	C01023	Universal Motor (110V~120V)	1	(7,8) (CSA)
	C01032	motor (DC.24V)	(1)	Special Order
	C01033	motor (DC.12V)	(1)	"
	C01034	Air power	(1)	"
7	C08008	Carbon Brush, for AC Motor	2	
8	C07004	Cap	2	
9	241075	Motor Base	1	
10	15/64S28004	Screw, for 241075	4	
11	13S5×10	Screw, for Motor	4	
12	C06004	Cable Clamp (SKIN TOP BS-9)	1	CE, CSA
13	C01028	Universal Motor (220V-90W)	1	
	C01029	Universal Motor (240V-90W)	1	
	C01030	Universal Motor (110V-90W)	1	
14	C08004	Carbon Brush, for AC Motor	2	
	C08005	Carbon Brush, for DC Motor	2	
15	C07003	Cap	2	
16	4S3×6-W	Screw	2	
17	C07005	Rubber Ring	1	
18	241073	Motor Base B	1	
19	15/64S28004	Screw, for 241073	4	
20	11/64S40091	Screw, for Motor	4	
21	11/64W10101	Washer, for Motor	4	
22	C09002	Noise Filter	1	CE
23	245133	Micro Switch Cover	1	CE, CSA
24	31LP16	"O" Ring	1	CE
25	241024DS	Handle Assembly (Safety Type with Pulley Cover)	1	CE
26	241024D	Handle Assembly	1	
27	C05010	Connector Housing (VHR-5N)	2	CE

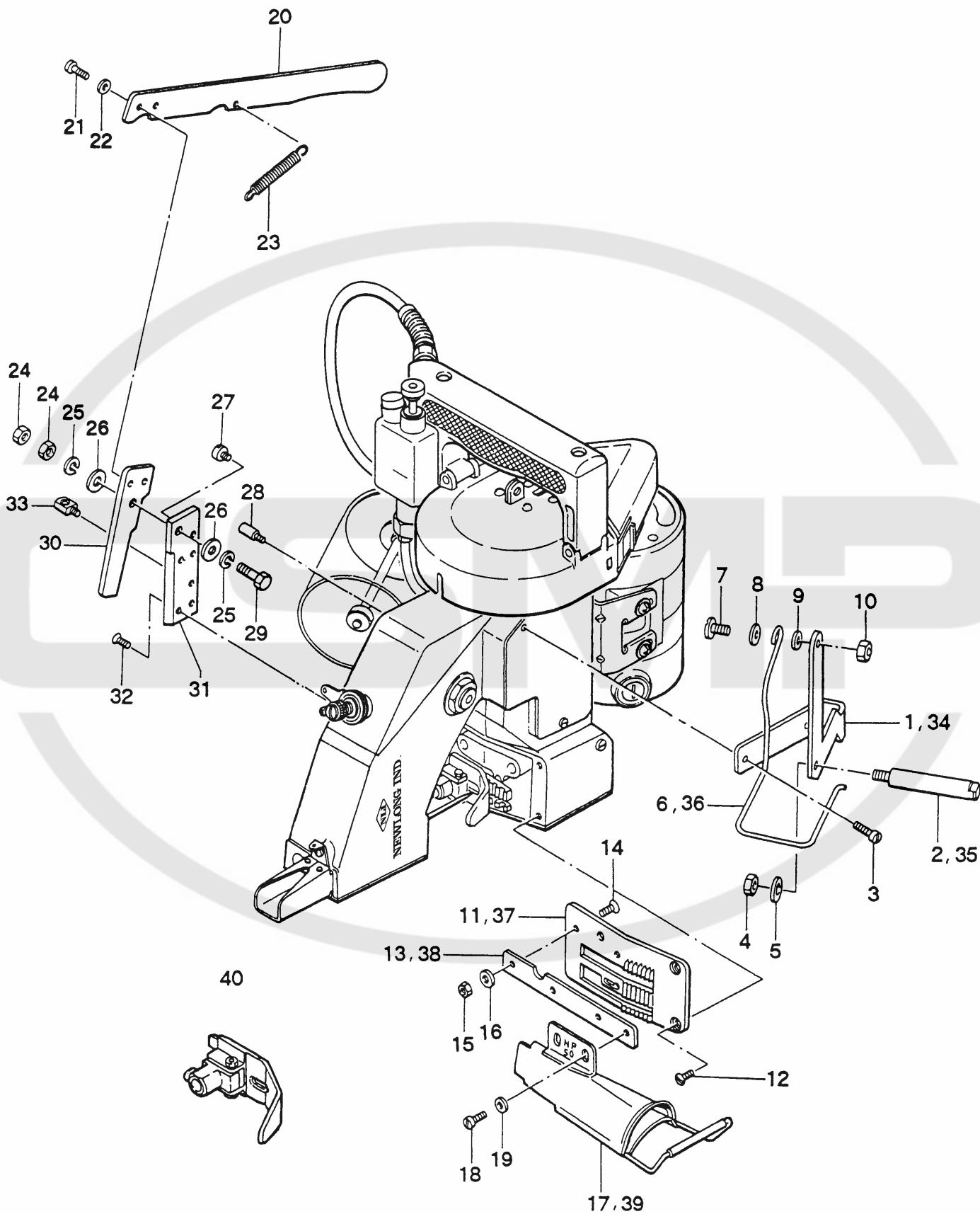
(7) SPECIAL PARTS FOR NP-7H



(7) SPECIAL PARTS FOR NP-7H

Ref. No.	Part No.	Description	Q'ty	Remarks
1	241024	Handle	1	(2)
2	9/64S40011	Screw	2	
3	241212	Pulley Cover	1	
4	9/64S40004	Screw, for 241053	2	
5	9/64S40052	Screw, for 241053	1	
6	241242	Pulley Cover Holder A	1	
7	15/64S28004	Screw, for 241242	2	
8	241231	Pulley Cover Holder B	1	
9	9/64S40005	Screw, for 241231	1	
10	241223	Handle Base	1	
11	15/64S28032	Screw, for 241253	2	
12	241253	Handle Base Holder	1	
13	D07021	Joint (BN-5-6)	2	(14)
14	E03014	Washer	4	
15	D07021	Joint (BN-5-6)	2	(14)
16	8FU2-6×95F	Oil Tube (φ 6×95ℓ), with oil felt	2	
17	8FU2-6×70F	Oil Tube (φ 6×70ℓ), with oil felt	1	
18	D07022	Joint	1	
19	D07023	Compression Sleeve	1	
20	D07024	Compression Bushing	1	
21	8FN2-4×135K	Oil Tube (φ 4×135ℓ), with oil wick	1	
22	245462	Oil Pipe	1	
23	D07009	Tube Clip (PC-4-1)	1	
24	9/64S40005	Screw, for D07009	1	

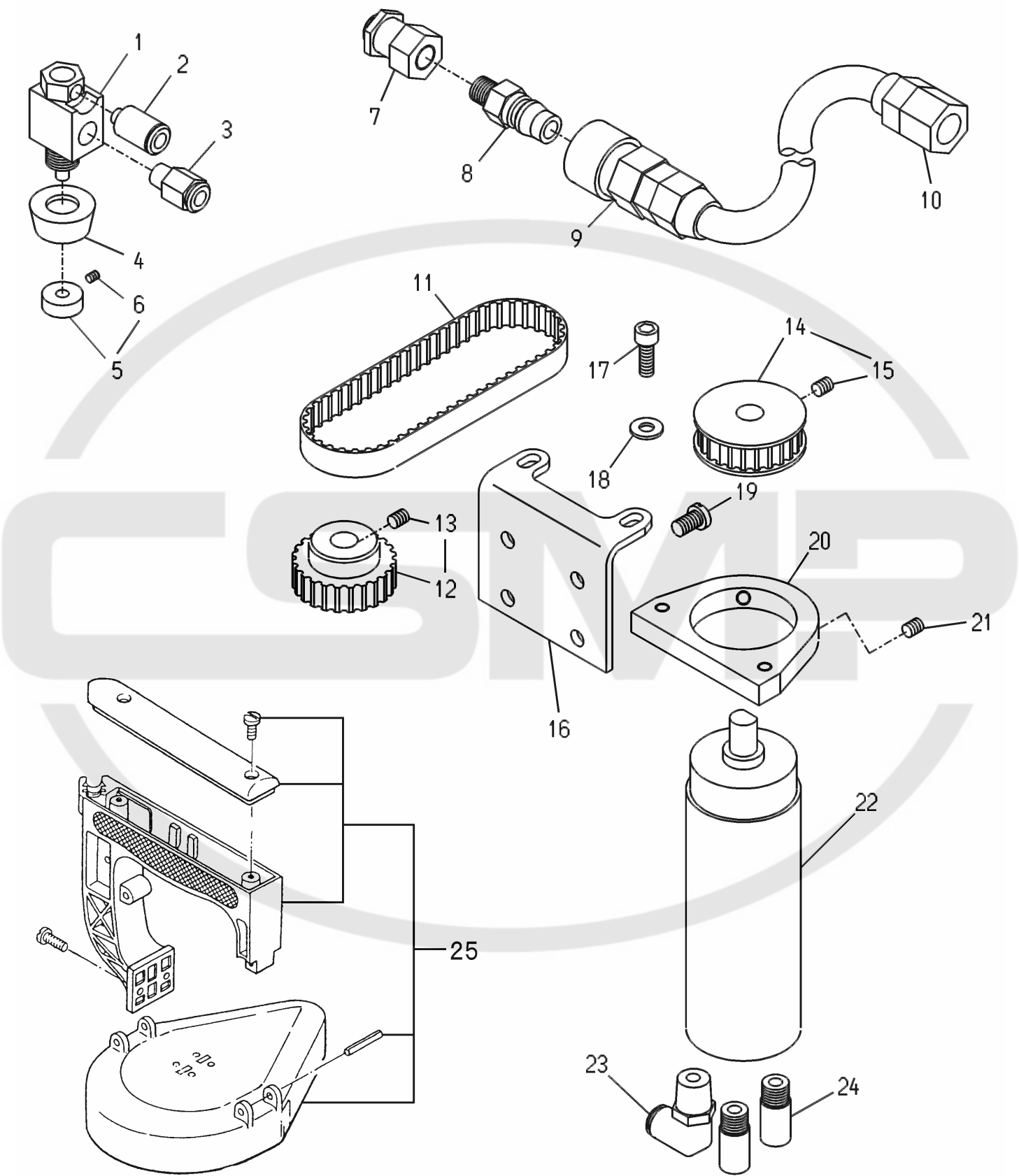
(8) CREPE TAPE BINDING AND CUTTER PARTS (Special Order Parts)



(8) CREPE TAPE BINDING AND CUTTER PARTS (Special Order Parts)

Ref.No.	Part No.	Description	Q' ty	Remarks
1	247071	Crepe Tape Bracket	1	
2	247091	Crepe Tape Hanger Stud	1	
3	9/64S40035	Screw, for 247071	2	
4	1N6	Nut, for 247091 (M6)	1	
5	2W6	Washer, for 247091 (M6)	1	
6	247081	Crepe Tape Supporter	1	
7	11/64S40015	Screw, for 247071	1	
8	1/4W03205	Spring Washer, for 247071	1	
9	1/4W15105	Washer, for 247071	1	
10	11/64N40203	Nut, for 247071	1	
11	244132	Throat Plate	1	
12	9/64S40043	Screw, for 244132	3	
13	247051	Holder, for crepe tape binder	1	
14	9/64S40043	Screw, for 247051	2	
15	9/64N40101	Nut, for 247051	2	
16	2W4	Washer, for 247051 (M4)	2	
17	247061	Crepe Tape binder	1	
18	9/64S40054	Screw, for 247061	2	
19	2W4	Washer, for 247061 (M4)	2	
20	247031	Cutter Lever	1	
21	11/64S40046	Screw, for 247011	2	
22	11/64W10101	Washer, for 247011	2	
23	247041	Spring	1	
24	15/64N28206	Nut, for 247021	2	
25	3W6	Spring Lock Washer, for 247021,(M6)	2	
26	2W6	Washer, for 247021,(M6)	2	
27	11/64S40029	Stopper Screw, for 247011	1	
28	3/16S32026	Stopper Screw, for 247031	1	
29	247021	Hinge Pin	1	
30	247011	Knife, Moving	1	
31	247001	Knife, Stationary	1	
32	1/8S40003	Screw, for 247001	4	
33	183261	Spring Hook	1	
34	247073	Crepe Tape Bracket	(1)	for Crepe Tape width 70 mm
35	247092	Crepe Tape Hanger Stud	(1)	
36	247082	Crepe Tape Supporter	(1)	
37	244133	Throat Plate	(1)	
38	247052	Holder, for crepe tape binder	(1)	
39	247063	Crepe tape Binder	(1)	
40	242261A	Presser Foot Assembly	(1)	

(9) AIR MOTOR EXCLUSIVE PARTS (NP-7R)



(9) AIR MOTOR EXCLUSIVE PARTS (NP-7R)

Ref.No.	Part No.	Description	Q' ty	Remarks
1	XS1158	Air Valve	1	
2	D07050	Tube Fitting Straight (POC6-M6M)	1	
3	D07033	Tube Fitting Straight (PC6-01M)	1	
4	XS1160	Nut for Air Valve	1	
5	XS1159	Switch	1	(6)
6	1S3×4	Screw	1	
7	D07049	Tube Fitting bulkhead Union (PMF6-01)	1	
8	D07052	Socket (10PM)	1	
9	D07053	Socket (30SAH)	1	
10	D07054	Socket (GT-12)	1	
11	F01012	Timing Belt (110XL037)	1	
12	241321	Synchro Pulley	1	(13)
13	1S5×8	Screw	2	
14	241311	Motor Pulley	1	(15)
15	1S5×8	Screw	2	
16	241331	Motor Base	1	
17	4B5×12	Screw	2	
18	2W5	Washer	2	
19	15/64S28004	Screw	4	
20	241301	Motor Holder	1	
21	1S5×8	Screw	2	
22	C01034	Air Motor	1	
23	D07060	Tube Fitting elbow (PL6-01)	1	
24	D07061	Silencer (PT1/8)	2	
25	XS1157	Handle	1	